

About Us

Established in 1980 in Istanbul, Özdisan is part of DMY Electronic Investments. Its core operations include electronic component distribution, R&D and field application support, PCB supply, PCB-A production, heat sink production, and LED lighting solutions.



Strongest Lines



Wide Stock Variety



Fast Supplying



Technical and Project Support



Online Ordering

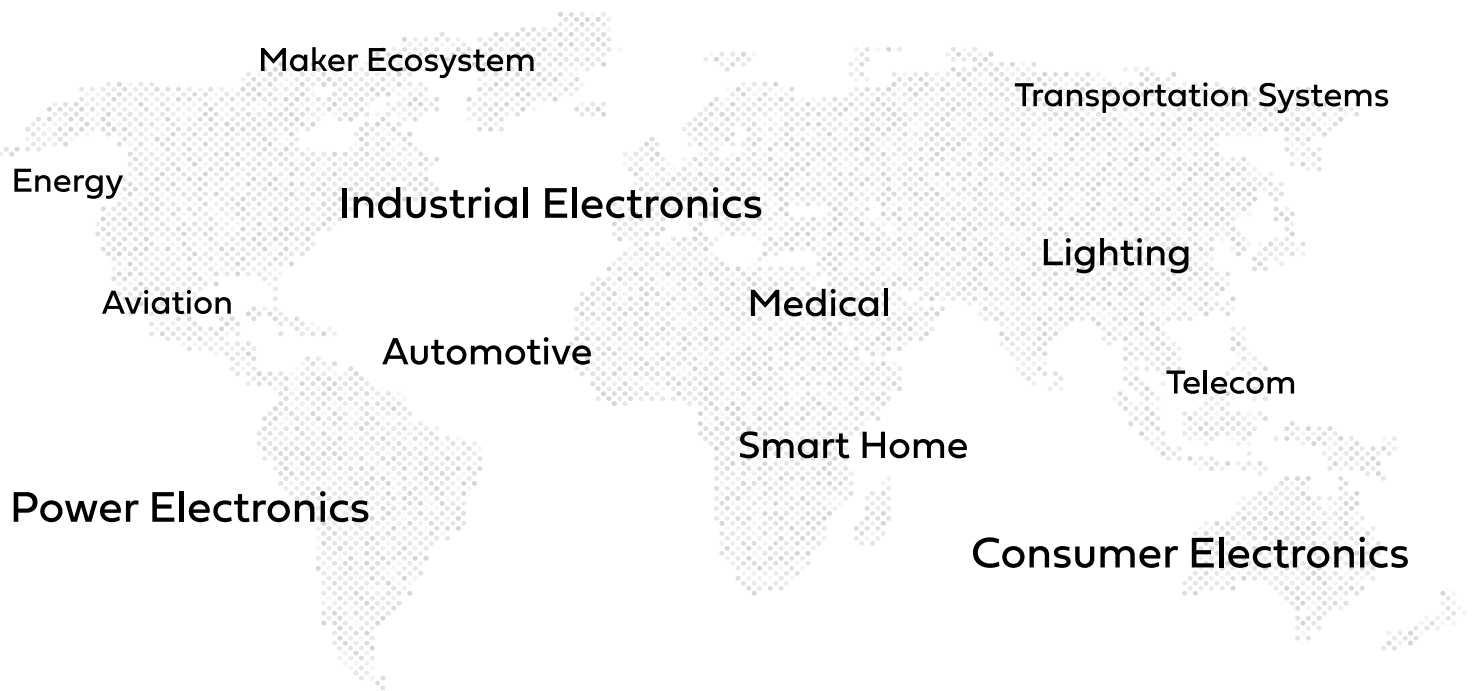


Production Planning



Turnkey Solutions

Key Applications





Electronic Component Distribution



1.000.000+
Products



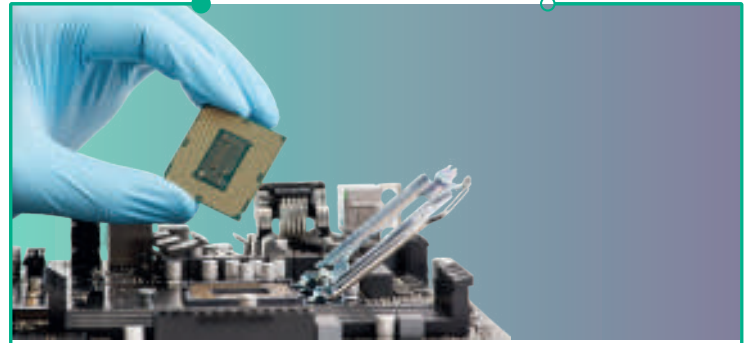
1.100+
Categories



Delivery from
Stock
&
Same Day
Shipping



105+
Brands



Technical and Design-in Support

Application Engineering Support



Product & Solution
Recommendation



Technical Workshop
&
Training



Hardware
&
Software Support



Sample Application
&
Demo Support

R&D and Project Support



Project
&
Design Support



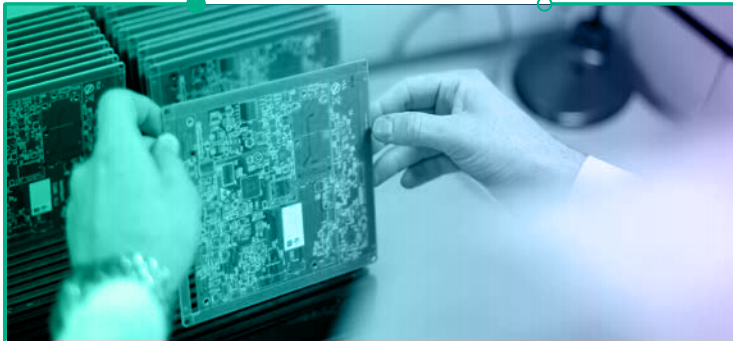
Testing
&
Reporting



Component
Engineering



Documentation



PCB Solutions

SOMACIS-TR

Up to 50 Layers
Heavy Copper up to 12 OZ
Line / Space: 1 / 1 Mil (25um)
HDI: 7+N+7

Rigid Boards - Flex Boards
Rigid-Flex Boards
HDI Boards RF/
Microwave Boards



ISO 13485 (Medical)
IATF-16949 (Automotive)

ISO 9001 (Quality)
EN/AS 9100 (Aerospace)



Technical Expertise
and Support



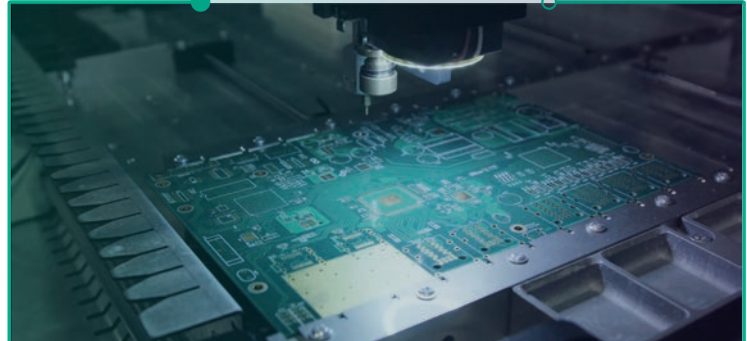
Swift and Reliable
Delivery



Compliance with
Industry Standards



Competitive Pricing



PCB-Assembly

11 SMT Lines
AOI, X-Ray Machine
ICT and FCT Testing
ISO and IATF 16949 Certification



Industrial



Medical



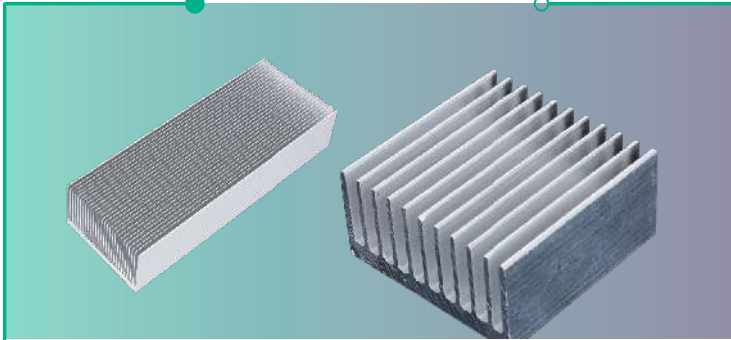
Telecommunication



Energy



Automotive



Aluminium Heatsink

Skiving heatsink technology
 Custom design production
 Drilling, tapping, rough & finish operations and surface milling

400 tons annual production capacity
 Over 100 extruded profiles & customized profiles.



UPS



Welding Machines



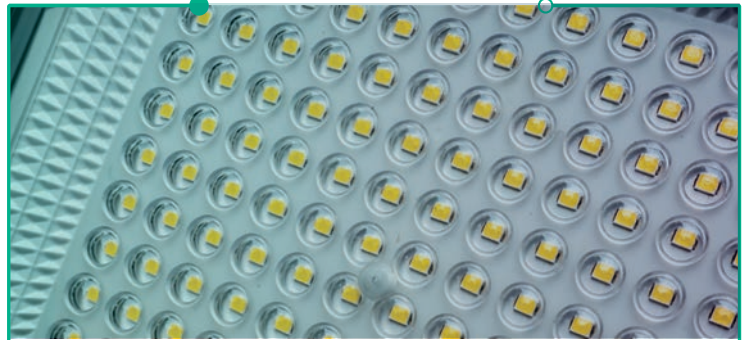
Inverters



Lighting



Regulators



LED Lighting Solutions

Delivering high-efficiency lighting through custom LED modules and optical design, powered by professional SMT/THT assembly, thermal management and tailored connectivity solutions.



Customized LED Module Design



LED COBs and LED Modules



LED Components



Replacement Lamps



Automation Solutions

Your trusted partner for modern automation technologies. Özdisan delivers smart, efficient and scalable solutions for industrial control and automation applications.



Authorized Distribution



Technical Support & Services



Training & Technical Documentation



Boardoza

Empowering ideas with open-source, user-friendly maker products.



Standardized Designs



Reliable Components



Open Source Supported



User-Based Development



Continuous Innovation

PCB Assembly

End-to-End Solution / Component + PCB + Assembly

High Quality / Inline inspection systems

Flexible Production / From Prototype to Mass Production

Strong Supply Chain / 1M + product access

13 SMT Lines / 1.42M components per hour production capacity



SMT Operation Process



01 Logistics & Manufacturing Facility



02 Traceability



03 Screen Printer



04 Solder Paste Inspection



05 SMD Assembly



06 Reflow



07 Automatic Optical Inspection



08 X-ray Process



09 THT Assembly



10 Selective Soldering



11 Manual Assembly



12 THT Automatic Optical Inspection



13 Washing Process



14 FCT/ICT Test



15 Depaneling



16 Coating



17 Aging



18 Vibration Testing



19 Quality Control & Shipping



A	D	H
<ul style="list-style-type: none"> • Amtek Technology Co., Ltd. • AI Thinker Co. Ltd. • AID Electronics Corp. • Aker Technology Co., Ltd. • Alcon Electronics Private Limited • Alliance Memory Inc. • Alpke Metal Makine Sanayi A.Ş. • Aplus Integrated Circuits Inc. • Arcol (Ohmite) • Asia Dragon Electric Co.,Ltd. • Attend Technologies Inc. 	<ul style="list-style-type: none"> • DC Components Co. Ltd. • Degson Electrical Co. Ltd. • DFRobot • Diptronics Manufacturing Inc. • Ducati Energia SPA 	<ul style="list-style-type: none"> • Harting • Hi-Link Electronic Co., Ltd. • Honeywell International, Inc. • Hope RF Microelectronics Co. • Hottech Electronics Co., Ltd. • Hsuan Mao Technology Co. Ltd. • HT Display Electronics Co. Ltd. • Huaxia Hengtai Electronic Co.,Ltd.
	E	I
<ul style="list-style-type: none"> • Bahco • Boardoza 	<ul style="list-style-type: none"> • EEMB Co. Ltd. • Elesta GMBH • Engineer Inc. • Everlight Electronics Co.Ltd. • Excelitas Technologies Corp. 	<ul style="list-style-type: none"> • Ignion • INVT Electric Co., Ltd. • Isabellenhütte GMBH • Isocom Components • I Wave Systems Technologies Pvt. Ltd. • IXYS
B	F	J
	<ul style="list-style-type: none"> • Forlinx Embedded • Foryard Optoelectronics Co. • Fuji Electric Co., Ltd. • Fuzetec Technology Co. Ltd. 	<ul style="list-style-type: none"> • Jamicon (Kaimei) Electronic Corp. • JB Capacitors Co., Ltd.
C	G	K
<ul style="list-style-type: none"> • Cinetech Ind. Co. Ltd. • Clare • Coilmaster Electronic Co., Ltd. • Connfly Electronic Co. Ltd. • Core Master Enterprise Co. Ltd. • Cosmo Ferrites Limited • Cree LED • C&K 	<ul style="list-style-type: none"> • Goltan Electronics • Great Power Battery Co. Ltd. 	<ul style="list-style-type: none"> • Kemet (Yageo) Corporation • Kendeil SRL • Kingtronics International Company • KLS Electronic Co. Ltd. • Koshin International Limited

L	Q	T
<ul style="list-style-type: none"> • Ledlink • LEM International SA • Lextar • Light Bo • Lindström • Littelfuse Inc. • Loyal Machinery Electronic Co. Ltd. 	<ul style="list-style-type: none"> • Qectell 	<ul style="list-style-type: none"> • Taejin Technology (HTC) Co. Ltd. • Team Source Display • Tescom • Thinking Electronic • Tianbo Electronics Co. Ltd. • Top Display Optoelectronics Co., Ltd.
M	R	U
<ul style="list-style-type: none"> • Maxbotix Inc. • Meishuo • Microina 	<ul style="list-style-type: none"> • Raltron Electronics Corporation • Raytac Corporation • Recom Power GMBH • Red Pitaya • Royalohm Electronic Factory Co Ltd. 	<ul style="list-style-type: none"> • Unisonic Technologies Co. Ltd.
N	S	V
<ul style="list-style-type: none"> • Nissha • Nuvoton Technology Corporation 	<ul style="list-style-type: none"> • Samsung Electro-Mechanics • Samwha Capacitor Group • SanRex Corporation • SAT International Co. Ltd. • Savior Corp. • Shindengen Electric Mfg. Co. Ltd. • Somacis • Sound Components Limited • Strong Base • Su'Scon • Sunnyway RF Technology 	<ul style="list-style-type: none"> • Viking Tech
O		W
<ul style="list-style-type: none"> • OncQue Corporation 		<ul style="list-style-type: none"> • WeEn Semiconductors • Weidy Industrial Electronics • Weintek Labs Inc. • Westcode • Winbond • Winstar Display Co. Ltd.
P		Y
<ul style="list-style-type: none"> • Panasonic Corporation • Panjit International Inc. • PF Motor & Fan • Philips (Signify) 		<ul style="list-style-type: none"> • Yageo Corporation
		#
		<ul style="list-style-type: none"> • 3Peak

Passive Components	Power Semiconductors	Circuit Protection	Electromechanical Components
Capacitors <ul style="list-style-type: none"> • AID • Alcon • Cinetech • Ducati • Hottech • Jamicon • JB • Kemet • Kendeil • Kingtronics • KLS • Koshin • Samsung • Samwha • Su'Scon • Viking Tech • Weidy • Yageo 	Diacs and Sidacs <ul style="list-style-type: none"> • Littelfuse • Shindengen 	Fuses <ul style="list-style-type: none"> • Fuzetec • Littelfuse • KLS • Thinking 	Audio Products <ul style="list-style-type: none"> • KLS • Littelfuse • Sound
	Diodes <ul style="list-style-type: none"> • DC Components • Fuji Electric • Hottech • IXYS • Kingtronics • Littelfuse • Panjit • Sanrex • Shindengen • Thinking • UTC • WeEn • Westcode 	Protectors <ul style="list-style-type: none"> • Honeywell • Littelfuse • KLS • Thinking • Yageo 	Fans <ul style="list-style-type: none"> • PF Motor & Fan
	IGBTs <ul style="list-style-type: none"> • Fuji Electric • IXYS • Littelfuse • Shindengen • WeEn 	Thermistors <ul style="list-style-type: none"> • Honeywell • Littelfuse • LMEM • KLS • Thinking • Yageo 	Isolation Products <ul style="list-style-type: none"> • Kemet • KLS
Ferrites <ul style="list-style-type: none"> • Core Master • Cosmo • KLS 	MOSFETs <ul style="list-style-type: none"> • Fuji Electric • Hottech • IXYS • Littelfuse • Shindengen • WeEn 	Integrated Circuits	Potentiometers and Trimpots <ul style="list-style-type: none"> • Honeywell • Kingtronics • KLS • Littelfuse
Filters <ul style="list-style-type: none"> • Kemet • Raltron 	Power Modules <ul style="list-style-type: none"> • Fuji Electric • Sanrex 	Embedded ICs <ul style="list-style-type: none"> • Nuvoton • Winbond • 3Peak 	Relays <ul style="list-style-type: none"> • Asia Dragon • Clare • Elesta GMBH • Kemet • Littelfuse • Meishuo • Panasonic • Tianbo
Frequency Products <ul style="list-style-type: none"> • Aker • HopeRF • KLS • Raltron 	Thyristors <ul style="list-style-type: none"> • IXYS • Littelfuse • Sanrex • Shindengen • UTC • WeEn 	ICs <ul style="list-style-type: none"> • Aplus • Clare • Honeywell • HTC • Littelfuse • Nuvoton • UTC • Winbond • 3Peak 	Switches <ul style="list-style-type: none"> • Amtek • Connfly • C&K • Diptronics • Honeywell • KLS • Littelfuse
Inductors <ul style="list-style-type: none"> • Core Master • Coilmaster • Kemet • KLS • Recom • Samsung • Samwha • Viking Tech • Yageo 	Transducers <ul style="list-style-type: none"> • LEM 	Interfaces and Peripherals ICs <ul style="list-style-type: none"> • Clare • UTC • Honeywell • Littelfuse • Nuvoton • Winbond • 3Peak 	Thermal Management <ul style="list-style-type: none"> • Fuji Electric • Hengtai • Jamicon • KLS • Littelfuse • Savior
Resistors <ul style="list-style-type: none"> • Arcol • Cinetech • Hottech • Isabellenhütte • Littelfuse • LMEM • KLS • Royalohm • Samsung • Viking Tech • Yageo 	Transistors <ul style="list-style-type: none"> • Fuji Electric • Hottech • Panjit • Sanrex • UTC • WeEn 	Memory ICs <ul style="list-style-type: none"> • Alliance • Winbond 	LEDs and Lighting Solutions
Transformers <ul style="list-style-type: none"> • Littelfuse • KLS 	Triacs <ul style="list-style-type: none"> • IXYS • Sanrex • Shindengen • UTC • WeEn 	Power Management ICs <ul style="list-style-type: none"> • Clare • Fuji Electric • Hottech • HTC • Littelfuse • Shindengen • UTC • 3Peak 	LED Components <ul style="list-style-type: none"> • Cree LED • Everlight • Foryard • KLS • Lextar • Light bo • Strong Base

<p>LED Drivers</p> <ul style="list-style-type: none"> • Philips • Recom 	<p>Connectors and Interconnects</p>	<p>ICs and Modules</p> <ul style="list-style-type: none"> • AI Thinker • DFRobot • Hi-Link • Hope RF • Quectell • Raytac 	<p>Automation Products</p>
<p>LED Optics</p> <ul style="list-style-type: none"> • LedLink 	<p>Connectors</p> <ul style="list-style-type: none"> • Amtek • Attend • Connfly • Degson • Harting • Hsuan Mao • KLS • Littelfuse • Satoz 	<p>Telecom</p> <ul style="list-style-type: none"> • Microina 	<p>Frequency Converters</p> <ul style="list-style-type: none"> • INVT
<p>PCB Solutions</p>	<p>Terminal Blocks</p> <ul style="list-style-type: none"> • Connfly • Degson • Golten • KLS • Littelfuse 	<p>Information Technology Products</p>	<p>Operator Panels, Motor Controllers and Panel Equipments</p> <ul style="list-style-type: none"> • Weintek
<p>PCB Solutions</p> <ul style="list-style-type: none"> • Somacis-TR 	<p>Wires and Cables</p>	<p>Connection Devices and Converters</p> <ul style="list-style-type: none"> • Attend • Engineer • KLS 	<p>PLC-CPU's</p> <ul style="list-style-type: none"> • INVT
<p>TFT, LCD and LED Displays</p>	<p>Cables</p> <ul style="list-style-type: none"> • Alpke • Amtek • Attend • Connfly • Degson • KLS • Littelfuse 	<p>Power Supplies</p>	<p>Maker and IoT Products</p>
<p>LCD</p> <ul style="list-style-type: none"> • HT Display • KLS • TDO • TSD • Winstar 	<p>Batteries</p>	<p>AC-DC Converters and Power Adapters</p> <ul style="list-style-type: none"> • Savior 	<p>Arduinos and Maker Tools</p> <ul style="list-style-type: none"> • Aplus • Boardoza • DFRobot
<p>LED Display</p> <ul style="list-style-type: none"> • Foryard • HT Display • KLS • Light bo • Strong Base 	<p>Standart and Storage Batteries</p> <ul style="list-style-type: none"> • EEMB • Great Power • Vitzrocell 	<p>UPS and Static Transfer Switches</p> <ul style="list-style-type: none"> • Tescom 	<p>Evaluation Platforms</p> <ul style="list-style-type: none"> • AI Thinker • Aplus • Boardoza • DFRobot • Excelitas • Hope RF • LEM • Littelfuse • Nuvoton • Raytac • Recom • Red Pitaya • Winstar
<p>TFT</p> <ul style="list-style-type: none"> • HT Display • SATOZ • TDO • TSD • Winstar 	<p>Wireless Solutions</p>	<p>Production Tools</p>	<p>Single Board Computers and Modules</p> <ul style="list-style-type: none"> • Boardoza • DFRobot • Forlinx • HT Display • I Wave Systems
<p>Optoelectronics and Sensors</p>	<p>Antennas</p> <ul style="list-style-type: none"> • Hope RF • Ignion • KLS • Quectel • Raltron • Sunnyway RF • Yageo 	<p>Antistatic Products</p> <ul style="list-style-type: none"> • Engineer 	
<p>Optoelectronics</p> <ul style="list-style-type: none"> • Everlight • Isocom • Littelfuse • UTC 	<p>Eval Boards and Programmers</p> <ul style="list-style-type: none"> • AI Thinker • Boardoza • Hope RF • Quectell • Raytac 	<p>Chemicals</p> <ul style="list-style-type: none"> • Engineer 	
<p>Sensors</p> <ul style="list-style-type: none"> • Everlight • Excelitas • Foryard • Honeywell • Hope RF • Isabellenhütte • Littelfuse • Maxbotix • Nissha • OncQue • Panasonic • Sound • Strongbase • UTC 		<p>Hand Tools</p> <ul style="list-style-type: none"> • Bahco • Engineer • Lindström 	
		<p>Test and Measurement Devices Corporation</p> <ul style="list-style-type: none"> • Engineer 	
		<p>Soldering Products</p>	
		<p>Solders and Fluxes</p> <ul style="list-style-type: none"> • Engineer 	
		<p>Soldering Spare Parts</p> <ul style="list-style-type: none"> • Engineer 	

