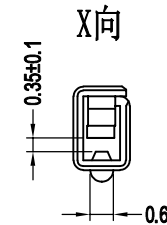
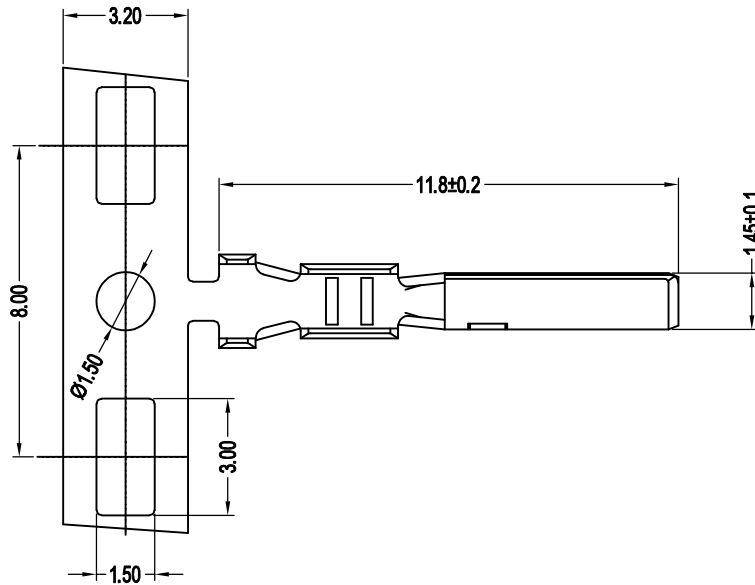
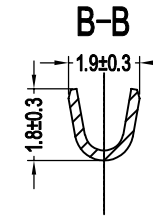
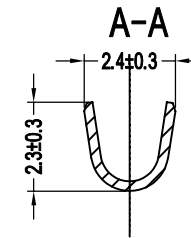
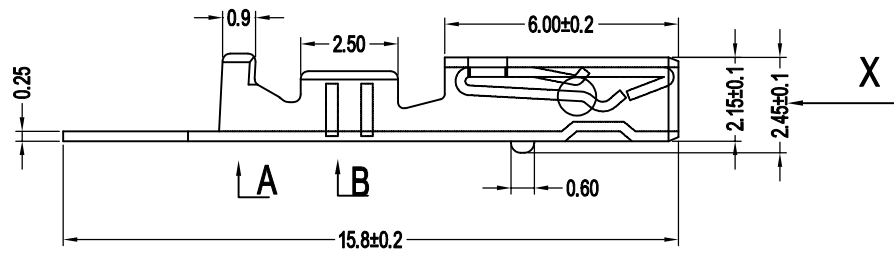


承认图面

REV	SYM	REVISION RECORD	DR.	APPR.	DATE
A/0		原始版本			A/0
A/1	①	高低温环境测试从85°C,更新到105°C	YF		2022.10.26



Part No.	REF
	Original Part No.

旧底图总号

底图总号

签字

日期

主要技术参数  
Main Specifications

额定电流 (Current rating): 3.0A AC, DC (AWG #22)  
 额定电压 (Voltage rating): 100V AC, DC  
 温度范围 (Temperature range): -55°C to +105°C ①  
 接触电阻 (Contact resistance): ≤10mΩ  
 绝缘电阻 (Insulation resistance): ≥1000MΩ  
 耐电压 (Withstand voltage): 1000V AC/minute  
 适用线规 (Applicable wire): AWG #26 to #22  
 适用基板厚度 (Applicable PC board thickness): 1.2 to 1.6mm

1	Terminal	Phos Bronze tin 磷青铜镀锡		
序号	名称/料号	材料	数量	附注
未注公差		NINGBO KLS ELECTRONIC CO; LTD		
X.° ±3° X.X° ±0.5°				
>0~3	>3~18	>18~50	>50~120	单位 比例 Design Units SIZE 页码
±0.12	±0.2	±0.3	±0.5	MM Only METRIC A4
制作	审核	批准	材料	图号 Part No.
见图解		品名	L-KLS13-JW-FT	