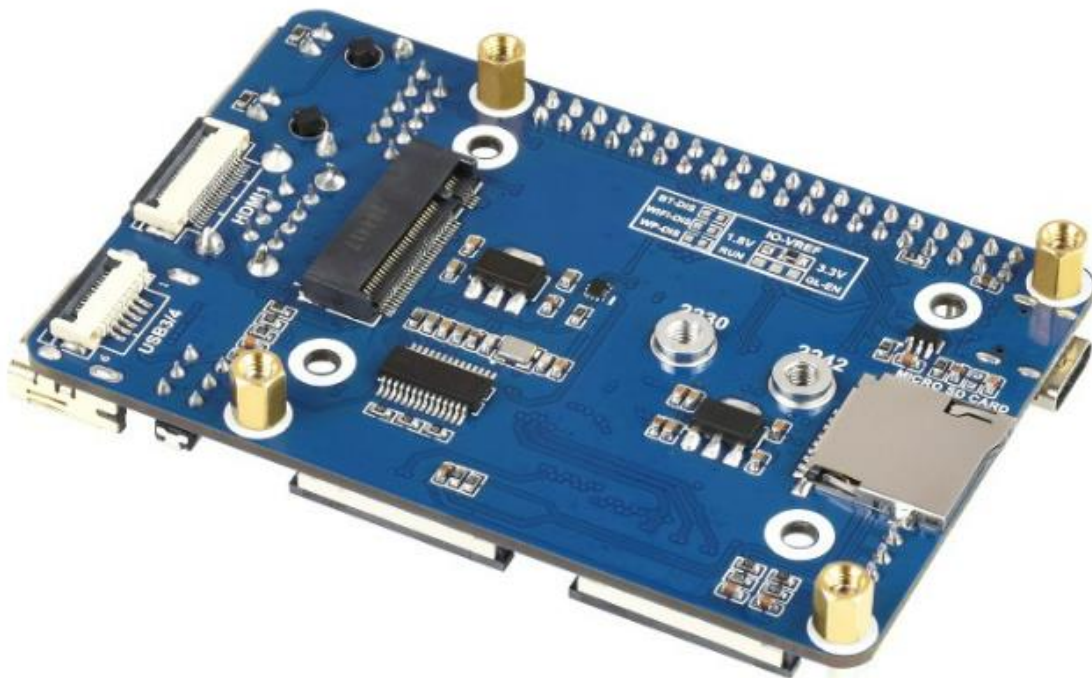


# CM4 IO MINI BASE BOARD A



# Specifications

<b>CM4 SOCKET</b>	suitable for all variants of Compute Module 4
<b>NETWORKING</b>	Gigabit Ethernet RJ45 connector
	M.2 M KEY, supports communication modules or NVME SSD
<b>CONNECTOR</b>	Raspberry Pi 40PIN GPIO header
<b>USB</b>	USB 2.0 Type A × 2, USB 2.0 via FFC connector × 2
<b>DISPLAY</b>	MIPI DSI display port (15pin 1.0mm FPC connector)
<b>CAMERA</b>	MIPI CSI-2 camera port × 2 (15pin 1.0mm FPC connector)
<b>VIDEO</b>	HDMI port × 2 (including one port via FFC connector), supports 4K 30fps output
<b>RTC</b>	N/A
<b>STORAGE</b>	MicroSD card socket for Compute Module 4 Lite (without eMMC) variants
<b>FAN HEADER</b>	no fan control, 5V
<b>POWER INPUT</b>	5V
<b>DIMENSIONS</b>	85 × 50mm