

|      |               |         |       |
|------|---------------|---------|-------|
| REV. | SPECIFICATION | ECN NO. | APPD. |
|      |               |         |       |

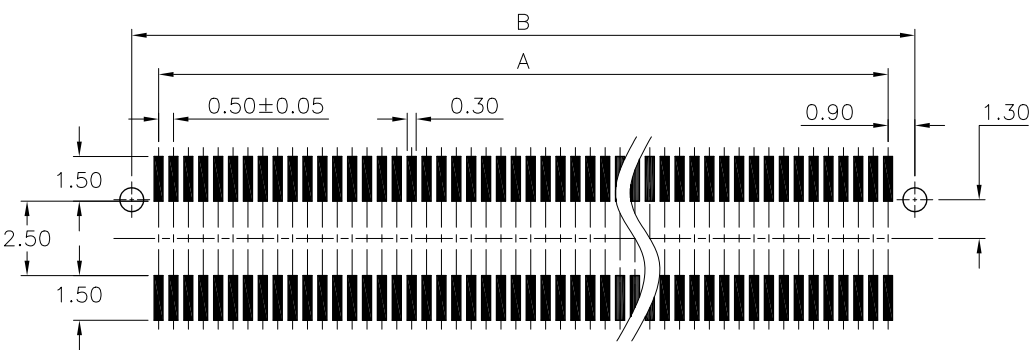
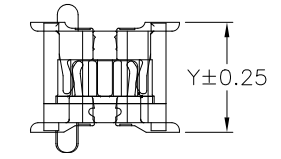
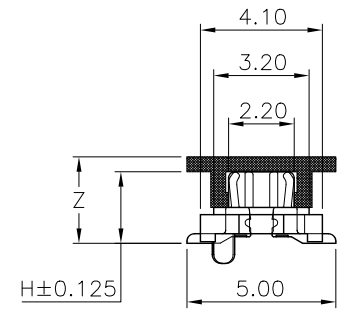
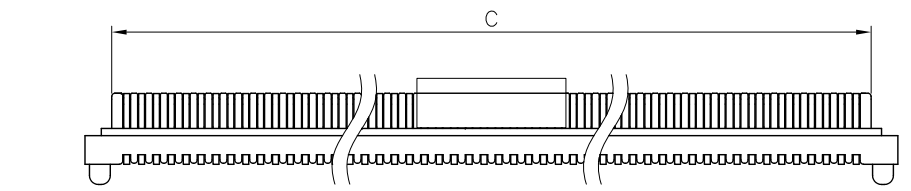
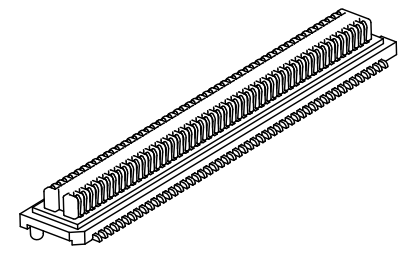
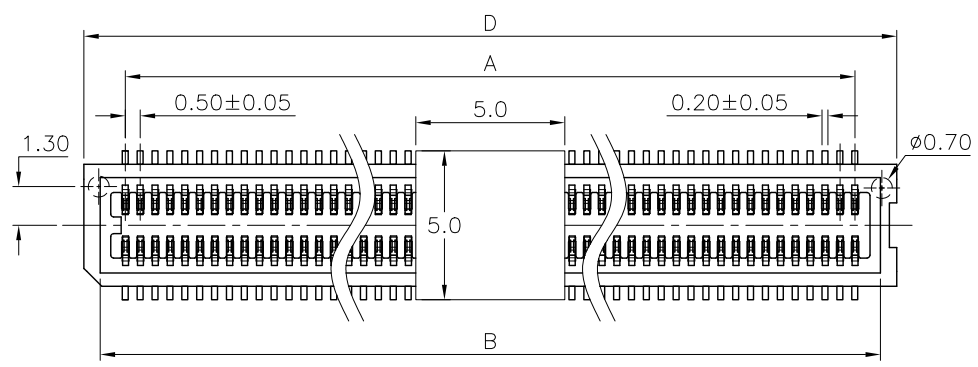
**Material:**

Housing: PA9T,UL94V-0.  
 Contacts: Brass,Gold Plated on Contact Area and Gold Flash on solder tail over Nickel 50μ" Min.

**Electrical Characteristics:**

Voltage Rating: 50V.  
 Current Rating: 0.5 AMP.  
 Dielectric Withstanding Voltage: AC 500V for 1 minute.  
 Insulator Resistance: 100MΩ min.  
 Contact Resistance: 40mΩ max.  
 Operating Temperature: -20°C~+105°C .

**\*RoHS Compliant**



P.C. Board Layout

2332- xx M G 00 D P T x -P  
 Series Position M:Male G: Gold Plated 00:G/F D:SMD Type P:Tape & Reel Package P: With Post N: Without Post  
 Code 1: 2.40mm 2: 2.74mm  
 P:CAP

|                        |                               |      |      |      |
|------------------------|-------------------------------|------|------|------|
| Position               | 20 Thru 100                   |      |      |      |
| Dimension              |                               |      |      |      |
| A                      | 0.50X(No of Position/2-1)     |      |      |      |
| B                      | 0.50X(No of Position/2-1)+1.8 |      |      |      |
| C                      | 0.50X(No of Position/2-1)+1.0 |      |      |      |
| D                      | 0.50X(No of Position/2-1)+2.8 |      |      |      |
| Code:1~2 Z<br>2332-xxM | 1                             | 2    |      |      |
|                        | 2.9                           | 3.24 |      |      |
| Code:1~2 H<br>2332-xxF | 1                             | 1    | 2    | 2    |
|                        | 2.74                          | 2.74 | 3.70 | 3.70 |
| Code:1~2 H<br>2332-xxM | 1                             | 2    | 1    | 2    |
|                        | 2.40                          | 2.74 | 2.40 | 2.74 |
| Stacked Height Y       | 3.5                           | 4.0  | 4.5  | 5.0  |

|             |            |                |
|-------------|------------|----------------|
| Tolerances  | Dwg No.    | 2332D01001     |
| x. = ±0.50  | Projection |                |
| .x = ±0.25  | Unit       | mm             |
| .xx = ±0.15 | Scale      | 1:1            |
|             | Drawn By   | Doris 04/12'18 |

Title:  
 2332 Series  
 Board to Board 0.5mm  
 662

**OUPIN**  
 OUPIN ELECTRONIC(KUNSHAN) CO., LTD.  
 P/N: 2332-xxMG00DPTx-P  
 SHEET 1/1 Ver.No. A4