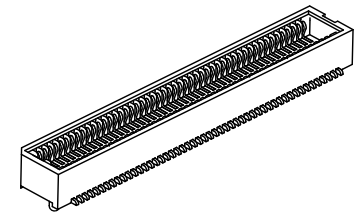
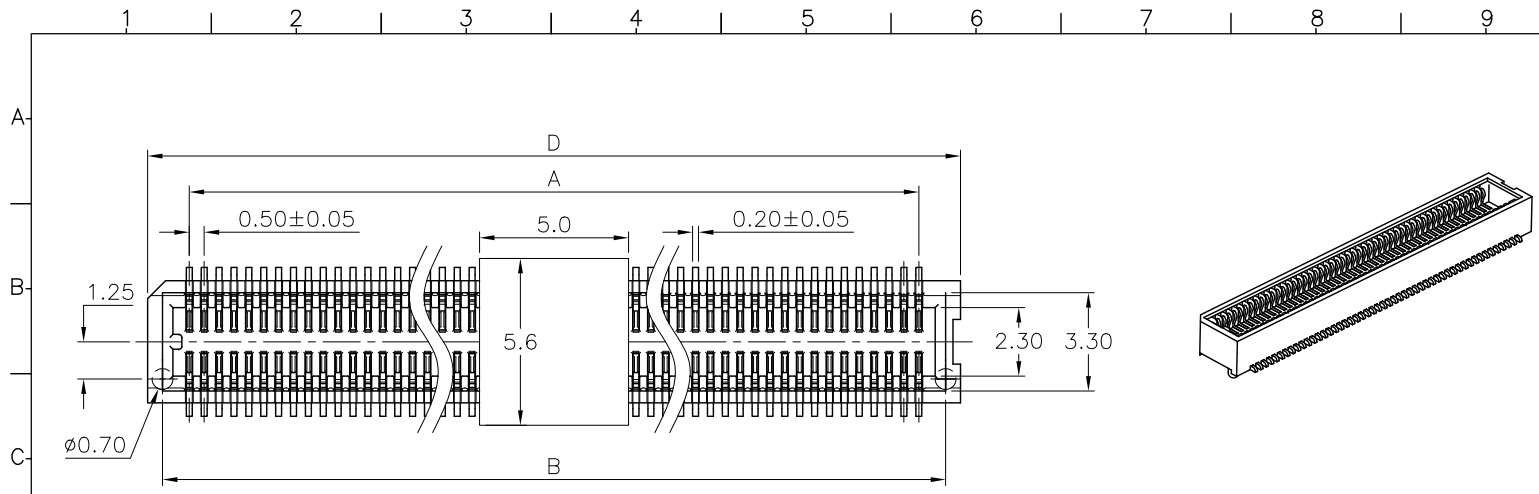
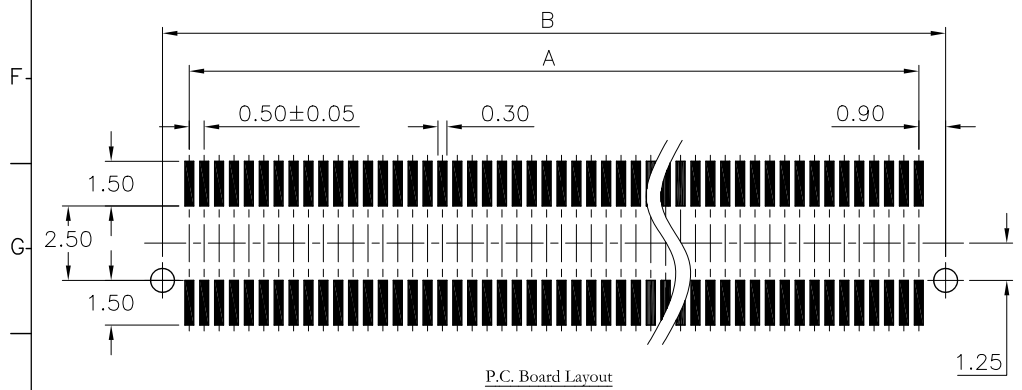
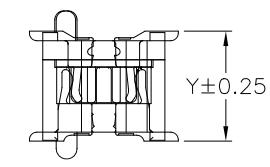
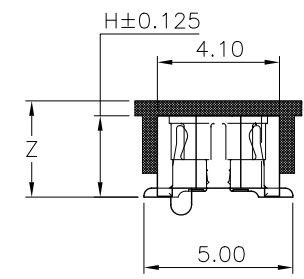
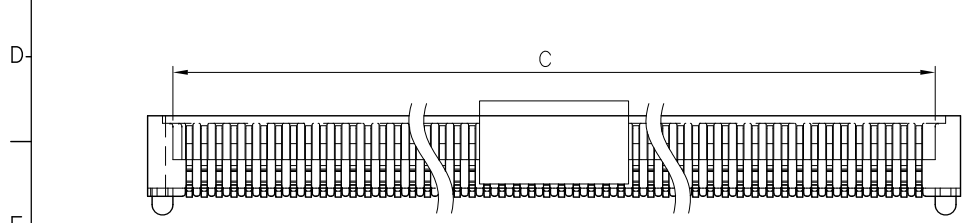


REV.	SPECIFICATION	ECN NO.	APPD.



Material:
Housing: PA9T,UL94V-0.
Contacts: Brass.Gold Plated on Contact Area and Gold Flash on solder tail over Nickel 50μ" Min..

Electrical Characteristics:
Voltage Rating: 50V.
Current Rating: 0.5 AMP.
Dielectric Withstanding Voltage: AC 500V for 1 minute.
Insulator Resistance: 100MΩ min.
Contact Resistance: 40mΩ max.
Operating Temperature: -20°C~+105°C .
***RoHS Compliant**



2332- xx F G 00 D P T x -P

Series — xx
Position — F
F:Female
G: Gold Plated
00:G/F
D:SMD Type

T: Tape & Reel Package
P: With Post
N: Without Post

Code
1: 2.74mm
2: 3.70mm

P:CAP

Position	20 Thru 100			
Dimension				
A	0.50X(No of Position/2-1)			
B	0.50X(No of Position/2-1)+1.8			
C	0.50X(No of Position/2-1)+1.1			
D	0.50X(No of Position/2-1)+2.8			
Code:1~2 Z 2332-xxF	1	2		
	3.24	4.2		
Code:1~2 H 2332-xxF	1	1	2	2
	2.74	2.74	3.70	3.70
Code:1~2 H 2332-xxM	1	2	1	2
	2.40	2.74	2.40	2.74
Stacked Height Y	3.5	4.0	4.5	5.0

Tolerances	Dwg No.	2332D02001
x. = ±0.50	Projection	
.x = ±0.25	Unit	mm
.xx = ±0.15	Scale	1:1
	Drawn By	Doris 04/12'18

Title:
2332 Series
Board to Board 0.5mm
① 662

OUPIN
OUPIN ELECTRONIC(KUNSHAN) CO., LTD.
P/N: 2332-xxFGOODPTx-P
SHEET 1/1 Ver.No. A4