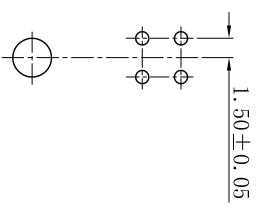
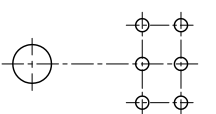


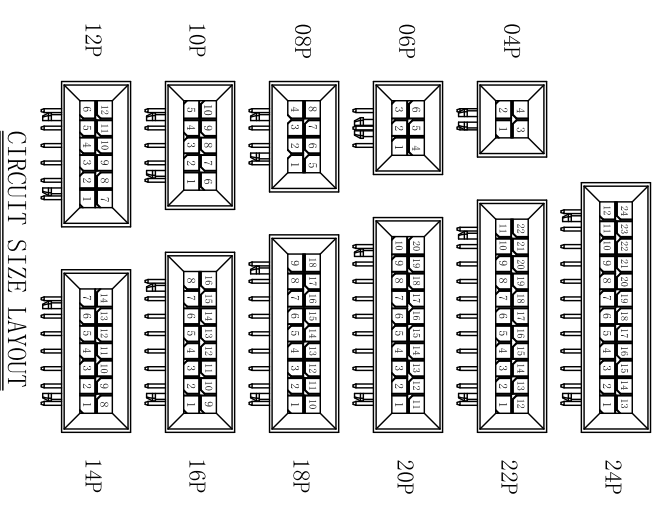
P.C.B LAYOUT: TOP VIEW
TOLERANCE: ±0.05mm
Poles: 08P~24P



P.C.B LAYOUT: TOP VIEW
Poles: 04P



P.C.B LAYOUT: TOP VIEW
Poles: 06P



Poles	Dimensions (mm)		
	A	B	C
04	3.00	13.00	/
06	6.00	16.00	/
08	9.00	19.00	4.68
10	12.00	22.00	7.68
12	15.00	25.00	10.68
14	18.00	28.00	13.68
16	21.00	31.00	16.68
18	24.00	34.00	19.68
20	27.00	37.00	22.68
22	30.00	40.00	25.68
24	33.00	43.00	28.68

- SPECIFICATIONS**
- Voltage rating: 250V AC, DC
 - Current rating: 5A, AC, DC
 - Withstanding Voltage: 1000V AC/minute
 - Insulation resistance: 1000MΩ min
 - Temperature range: -25° C~+85° C
 - Contact resistance: 20mΩ max
 - Poles: 04-24P
 - Housing Material: PA9T UL94V-0 Black
 - Pin Material: Brass
 - Contact Area Plating: Tin-Plated or Gold-Plated
 - The Dimension Marked “▼” Must Be Recorded

NINGBO KLS ELECTRONIC CO, LTD

一般公差 GENERAL TOLERANCE:		0±0.30
		.00±0.25
		.000±0.20
		.000±0.05
ANGLE: ±1°		

绘图/DR	2019-10-17	PPD
审核/CHECK	2019-03-12	PPD
批准/APPRO	日期 DATE	承认 APPRO.
说明 DESCRIPTION	日期 DATE	承认 APPRO.

投影法	第一角	品名 (PART NAME)	Molex 3.00mm 90° Wafer Connector Series
单位 Unit	MM	料号 (PART NO)	L-KLS1-XM1-3.00-2X12-RL
比例/Scale	1:1	状态码	C
大小/SIZE	A4		
页码/SHEET	1/1		
版本/New	B		