

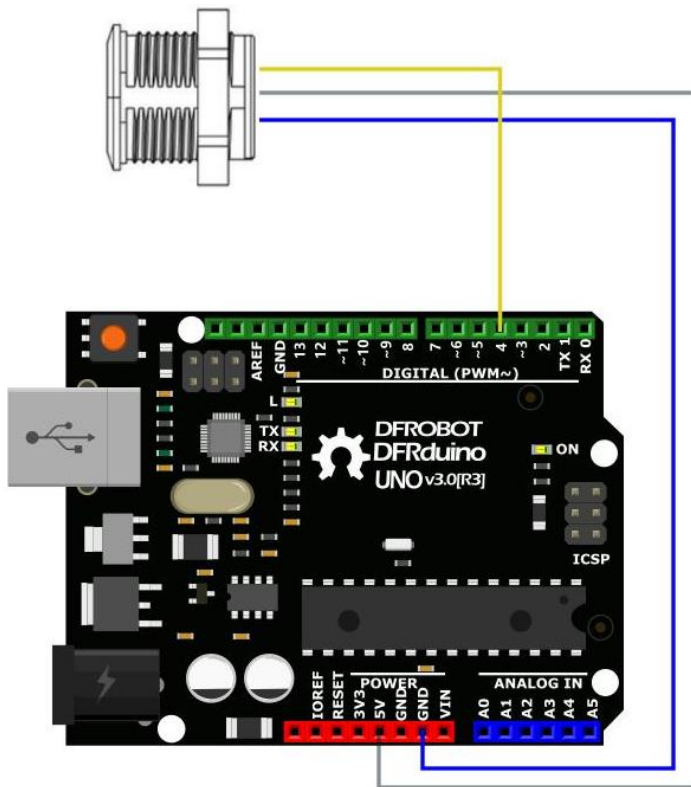
Digital IR Proximity Sensor (1-400cm)

INTRODUCTION

This digital laser proximity sensor, the advanced version of Digital IR Proximity Sensor (SKU: SEN0381), offers a longer sensing distance and comes with an indicator for showing real-time sensor status. Keep pressing down the on-board button for 3 seconds, then the indicator starts to flash and the detection distance can be adjusted within 1 to 400cm as per your need. The sensor can automatically detect and save the distance between it and the obstacle ahead.

In addition, the sensor features digital signal output, which works well with the Arduino IO expansion board. It can be widely used in applications like smart homes, house security, intelligent detection and control, robot obstacle, and so on.

The sensor is based on the principle of diffuse reflection of laser on the object. When a person or object enters the sensing range in front of the sensor, the sensor immediately determines that there is induction, so as to control to output signal; after the person or object leaves the sensing range, it will judge that there is no induction, and stop signal output, by which intelligent control can be achieved.



Connection Diagram

Compatible with DFRduino UNO R3 and IO Expansion Shield

FEATURES

Wide range of applications

With on-board button for detection distance adjustment

Laser sensing with the detection distance up to 4m

APPLICATIONS

Smart home

House security

Intelligent detection and control

Robot obstacle

SPECIFICATION

Power Supply: DC 5-24V

Load Current: 300mA

Operating Current: 15mA

Detection Distance: adjustable within 1-400cm

Detection Accuracy: $\pm 4\%$

Wavelength: 940nm laser emitter

Output Mode: high/low level

Detection Angle: 35°(transmit), 25°(receive)

Short Circuit Protection: disable output when over 1A

Detection Mode: active mode

Operating Ambient Temperature: -20-70°C

Storage Temperature: -20°-85°C

Waterproof Performance: IP67

Material: filter: PC optical material, housing: PC-V0 fireproof materia

SHIPPING LIST

Digital Laser Proximity Sensor (1-400cm) x1

