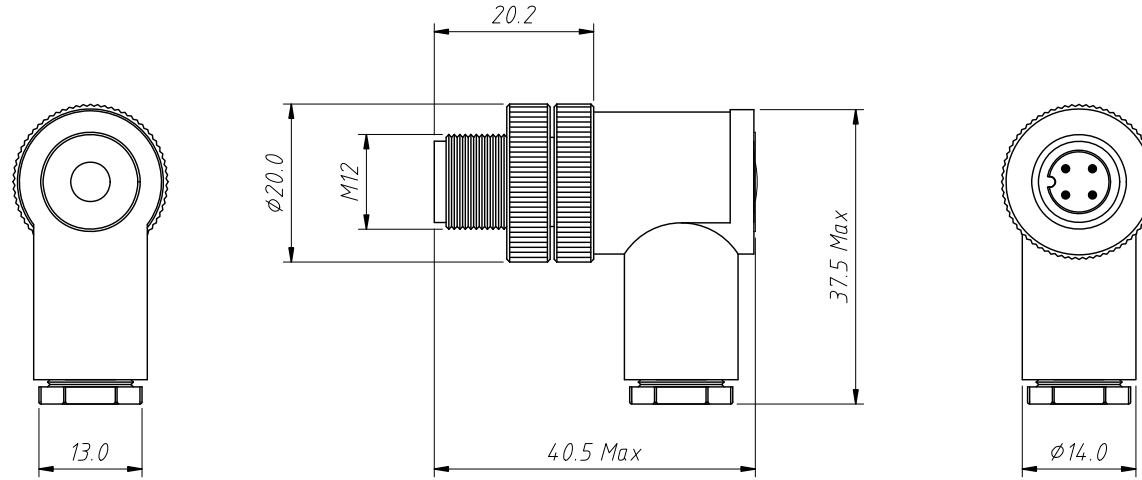


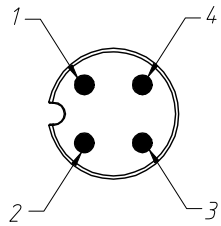
1 RoHS Compliance



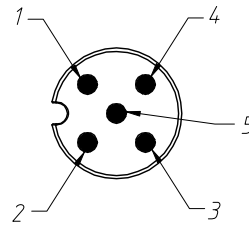
Material:  
 Insulation: PBT/PA, UL 94 V-0, Black.  
 Connector Pin: Brass, 0.025u" Gold plated  
 Nut/Screw: Brass, Nickel plating

Electrical Characteristics:  
 Contact Resistance: 5mΩ Max  
 Insulation resistance: 100 MΩ Min

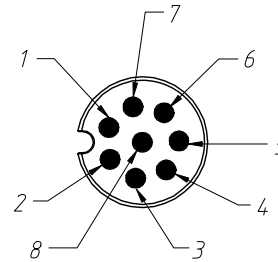
Mechanical properties:  
 IP rating: IP67  
 Wire gauge: 24AWG/0.25mm<sup>2</sup>  
 Mechanical characteristics: mating/cycle > 100 cycle  
 Operating Temperature: -40°C ~ + 85°C



L-KLS15-M12A-TR104PG7



L-KLS15-M12A-TR105PG7



L-KLS15-M12A-TR108PG7

Order Information:

L-KLS15-M12 A-TR1 04 PG7

L: RoHS

Screw type: M12

A: A-Coding

Type:

TR1: R/A Plug Code (Male Pin)

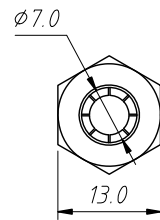
TR2: R/A Plug Code (Female Pin)

Number of Contacts:

(04P 05P 08P)]

Cable outlet PG7 or PG9

No. of Pin	04 P	05 P	08 P
Rated current	4A	4A	2A
Rated voltage	250V	60V	30V



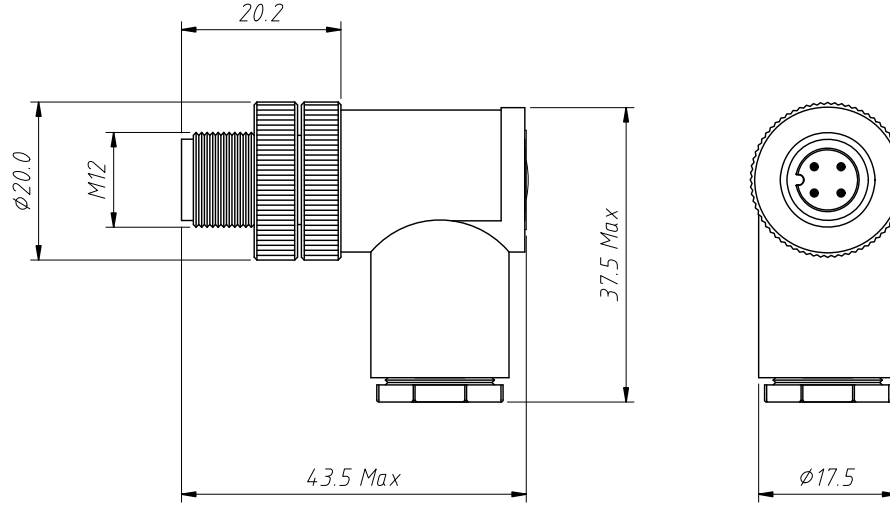
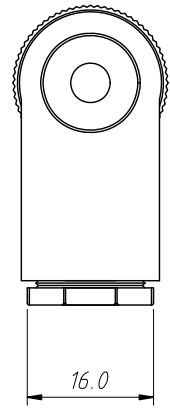
Cable outlet  
PG7

ANGLE TOLERANCE	PROJECTION	Description:
±3°		M12 IP67 Waterproof circular plug male connector
GENERAL TOLERANCE	UNITS	mm
x.x ±0.30	SHEET SIZE	A4
x.xx ±0.20	Draw:	Daniel 2022-04-01
x.xxx ±0.10	Check:	Daniel 2022-04-01



NingBo KLS ELECTRONIC CO., L TD.

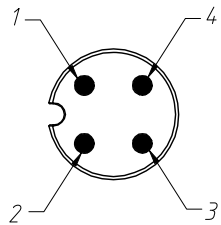
1 RoHS Compliance



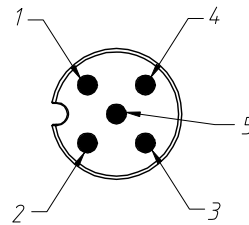
Material:  
 Insulation: PBT/PA, UL 94 V-0, Black.  
 Connector Pin: Brass, 0.025u" Gold plated  
 Nut/Screw: Brass, Nickel plating

Electrical Characteristics:  
 Contact Resistance: 5mΩ Max  
 Insulation resistance: 100 MΩ Min

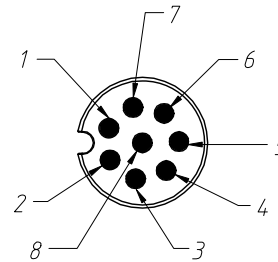
Mechanical properties:  
 IP rating: IP67  
 Wire gauge: 24AWG/0.25mm<sup>2</sup>  
 Mechanical characteristics: mating/cycle > 100 cycle  
 Operating Temperature: -40°C ~ + 85°C



L-KLS15-M12A-TR104PG9



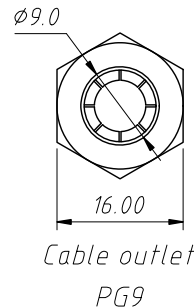
L-KLS15-M12A-TR105PG9



L-KLS15-M12A-TR108PG9

Order Information:  
 L-KLS15-M12 A-TR1 04 PG9  
 L: RoHS  
 Screw type: M12  
 A: A-Coding  
 Type: \_\_\_\_\_  
 TR1: R/A Plug Code (Male Pin)  
 TR2: R/A Plug Code (Female Pin)  
 Number of Contacts: \_\_\_\_\_  
 (04P 05P 08P)]  
 Cable outlet PG7 or PG9

No. of Pin	04 P	05 P	08 P
Rated current	4A	4A	2A
Rated voltage	250V	60V	30V



ANGLE TOLERANCE	PROJECTION	Description:
±3°		M12 IP67 Waterproof circular plug male connector
GENERAL TOLERANCE	UNITS	mm
x.x ±0.30	SHEET SIZE	A4
x.xx ±0.20	Draw:	Daniel 2022-04-01
x.xxx ±0.10	Check:	Daniel 2022-04-01

**KLS** NingBo KLS ELECTRONIC CO.,L TD.