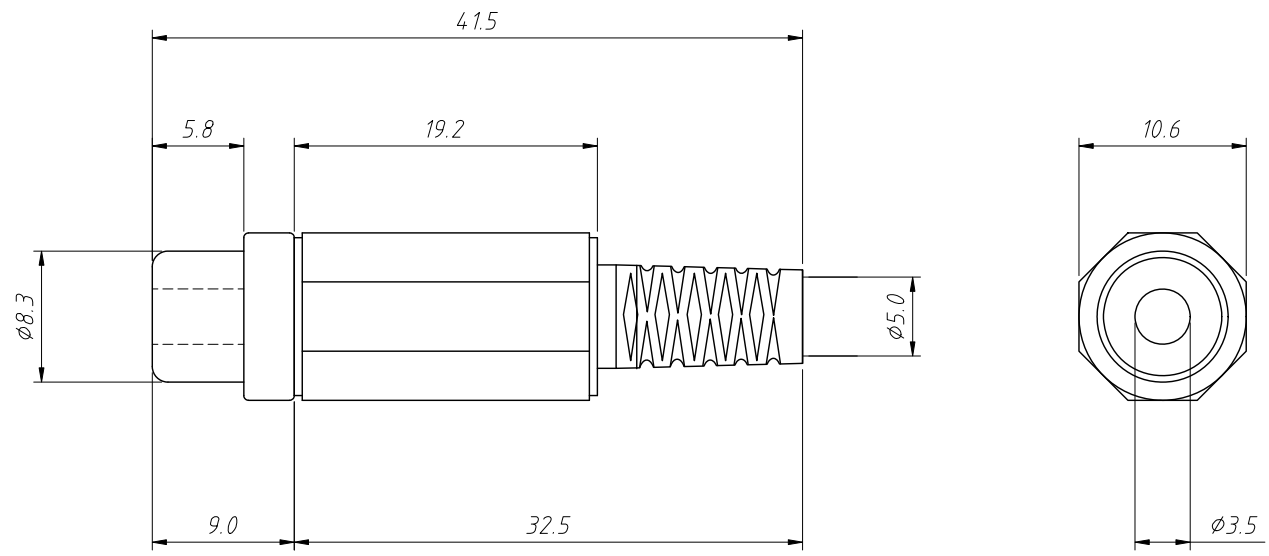


1
RoHS Compliance



Description:
Connector Type:Phono (RCA) Socket
Gender: Female
Signal Lines:Mono
Shielding:Unshielded
Color - Contact:Silver
Packaging:Bulk
Contact Material:Brass
Housing Color:Black,Blue,Red,Green,Yellow.....
Housing Material:Thermoplastic
Cable Diam:5.0mm Max.
Operating Temperature:-20°C ~ 85°C

Order Information:
L-KLS1-RCA-PF01-N-B
 L: RoHS
 Part No.
 Contacts:Nickel Plated
 Housing Color:B-Black
 L-Blue R-Red G-Green
 Y-Yellow W-White

ANGLE TOLERANCE	PROJECTION	Description:	RCA Phono Socket Connector, Nickel Plated,Plastic Housing
$\pm 3^\circ$			
GENERAL TOLERANCE	UNITS	mm	KLS P/N: L-KLS1-RCA-PF01-N-B
x.x ± 0.30	SHEET SIZE	A4	2:1
x.xx ± 0.20	Draw:	Daniel	2022-09-15
x.xxx ± 0.10	Check:	Daniel	2022-09-15

