

SL-32/33

SL-32

- 35mm Acrylic lens, 3.5X magnification
- Housing : 79 x 44 x 12 (H) mm

SL-33

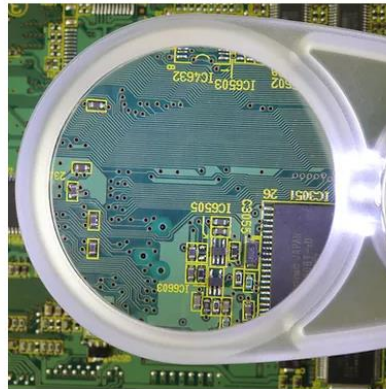
- 45mm Acrylic lens, 3X magnification
- Housing : 90 x 55 x 13 (H) mm

** Battery : CR2016 Lithium (2 pcs.) included

Features



Slide out the lens to turn on the light automatically.



Magnified image (SL-33)