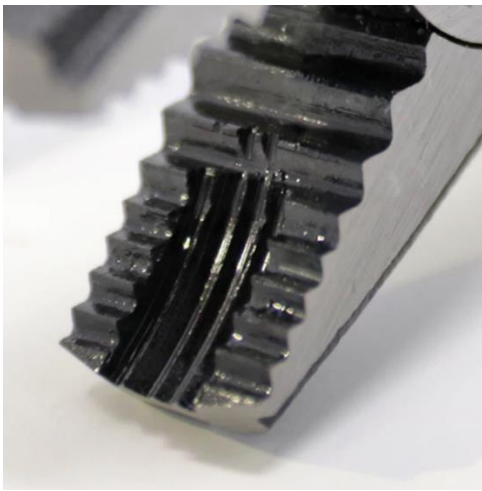
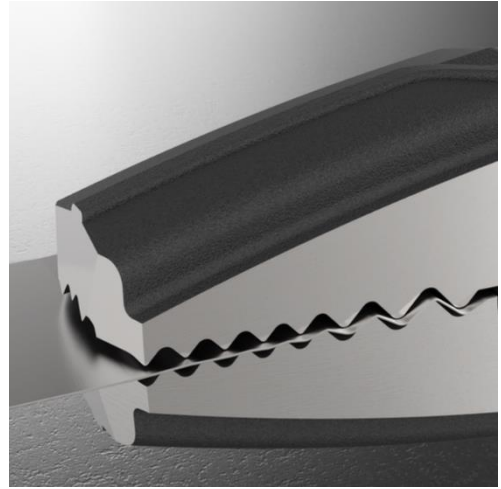


PZ-22

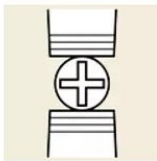


Multi-purpose Extraction Tool for Stubborn Fasteners... Eat it!!

- Unique jaws with vertical serrations grip a screw head securely without slipping, helpful in confined areas.
- Just Grip and Turn!! - High leverage structure requires less gripping power.
- Inter-meshed Side Teeth -- Enough to hold extremely-thin plates very securely as well as thicker materials when the jaws are closed. Assures you of a firm grip!!
- Owing to T-shaped forging handles, the handle sleeve will not twist or slip off during heavy duty use.

How does PZ-22 work?

Ordinary Pliers

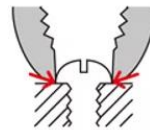


Ordinary pliers jaws are lined with horizontal serrations. When you grasp and turn a screw head with ordinary pliers, the jaws slip and the screw remains stuck.



The tips of jaws can not reach the outer edge of screw head when the jaws are opened.

PZ-22

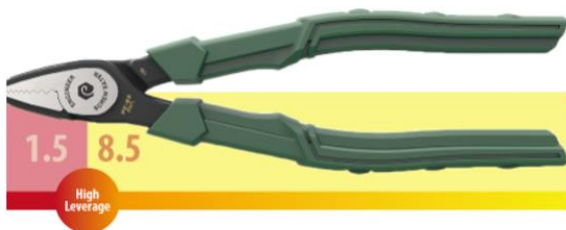


Specially-designed teeth generate gripping power.



The serrated jaws angled inward grab the rim of screw head, so no slippage.

High Leverage structure



Screw Head Size



Dome (Truss) Head
Round or Pan Head
Screw head: dia. 3 to 11mm

Applications



Stripped

Rusted

Torx

Dome Head



PAINTED-OVER

SPECIAL SHAPE

DAMAGED

RUSTED

Heavy-duty T-shaped handles



This unique handle shape helps to prevent the handle sleeve from twisting or turning round, good for heavy users.

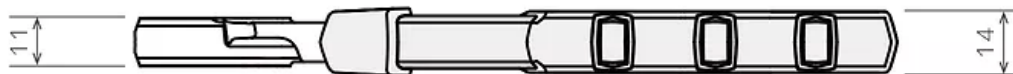
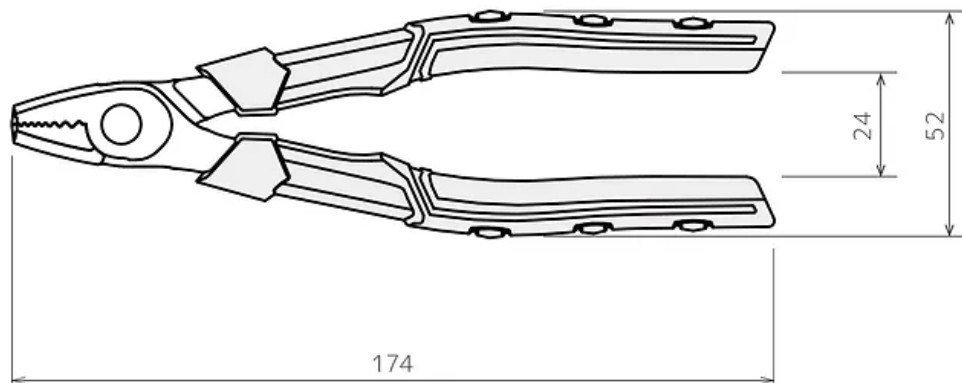
Light weight (20% less in-house comparison)

Note



1) The tool may not remove specially-hardened, heat-treated or glued screws.

2) Be sure to apply this tool to a screw head, but not to screw thread.



Model	Size	Material	Screw Head Size	Hardness	Weight
PZ-22	175mm	Carbon Steel	dia. 3 to 11mm	HRC60±2	165g

