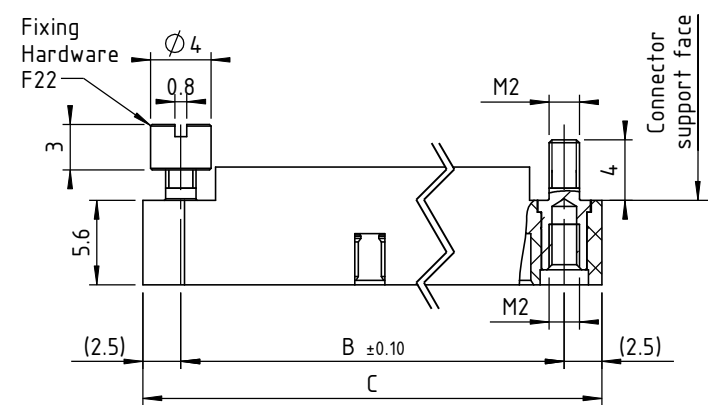
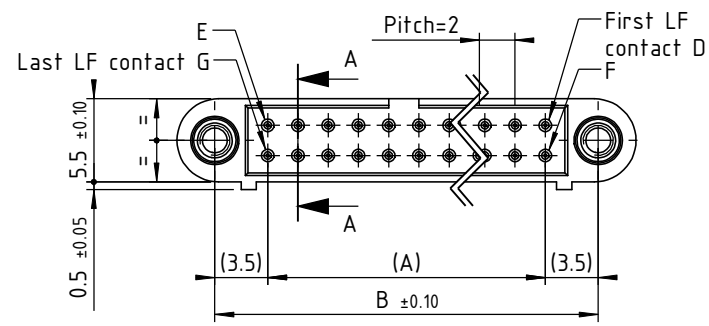
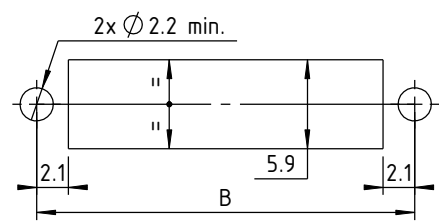
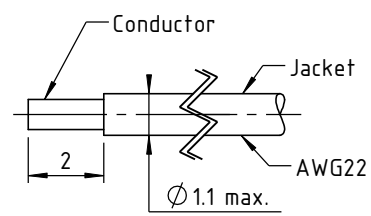
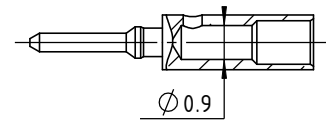


Recommended PCB layout:



LF contact to crimp or to solder "C" AWG22 Scale : 5:1



TECHNICALS FEATURES

MATERIAL

INSULATOR : Special PPS (Polyphenylene Sulfide Fibreglass filled thermoplastic) UL 94-V0



- Radiation resistance
- No humidity absorption
- Oxygen free

Note : PPS characteristics are recognized for space applications

CRIMPING SIGNAL CONTACTS :

Male :
▪ **Body** Copper alloy / Ni + Au 1µ

FIXING HARDWARE :

- **Jackscrew :** Stainless steel

ELECTRICAL for LF Contacts

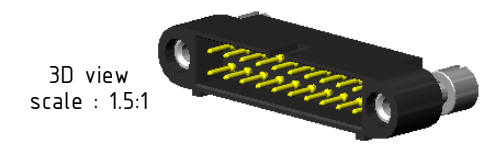
- **All contacts** 3 A max. @ 25°C
2.2 A max. @ 85°C
- **Working voltage (sea level)** Tested at 800 V DC
- **Proof voltage** Tested at 1200 V DC
- **Contact resistance (initially)** max. 10 mΩ
- **Insulation resistance** 1000 MΩ min

MECHANICAL for LF Contacts

- **Mechanical operations** 500 cycles min. up to 2500.
- **Contact insertion and withdrawal force** 2 N max. / 0.2 N min. per contact
- **Contact retention in insulator** 10 N min.
- **Contact replacement in insulator** 3 cycles

ENVIRONMENTAL

- **Temperature range** From -60°C to +260°C
- **Vibration severity** 0.75mm, 10 g RMS 6 hours long random with superimposed sinusoid. No intermitencies measured when using an H.S.L.I. (High Speed Logic Interrupt) detector with a trip threshold of 2 ns.
- **Shock severity** 100g for 6 ms
- **Solvent resistance** HcFc 141 bMGX (ATOCHEM) solvent
- **Salt spray test** 96 hrs
- **Humidity test** 56 days @ 90% humidity



Crimping following cable instruction ICLF01
Marking as referenced in the CMM catalogue pages 12 & 13

CONNECTOR SERIES 220 MALE							
LF contacts number mm	Distance in mm between axes		Length in mm	LF contacts reference mark number			
	A	B		D	E	F	G
04	2	9	14	1	2	3	4
06	4	11	16	1	3	4	6
08	6	13	18	1	4	5	8
10	8	15	20	1	5	6	10
12	10	17	22	1	6	7	12
14	12	19	24	1	7	8	14
16	14	21	26	1	8	9	16
18	16	23	28	1	9	10	18
20	18	25	30	1	10	11	20
22	20	27	32	1	11	12	22
24	22	29	34	1	12	13	24
26	24	31	36	1	13	14	26
28	26	33	38	1	14	15	28
30	28	35	40	1	15	16	30
32	30	37	42	1	16	17	32
34	32	39	44	1	17	18	34
36	34	41	46	1	18	19	36
38	36	43	48	1	19	20	38
40	38	45	50	1	20	21	40
42	40	47	52	1	21	22	42
44	42	49	54	1	22	23	44
46	44	51	56	1	23	24	46
48	46	53	58	1	24	25	48
50	48	55	60	1	25	26	50
52	50	57	62	1	26	27	52
54	52	59	64	1	27	28	54
56	54	61	66	1	28	29	56
58	56	63	68	1	29	30	58
60	58	65	70	1	30	31	60

Tools recommended	
LF contacts insertion & withdrawal tool	C12935
Recommended hand crimp tool	MH800
Recommended positionner K 1692	C12929
AWG22 crimp tool setting	Position 6
Screwdriver for standard nut	C14743

nicomatic
www.nicomatic.com
Mail : nicomatic@nicomatic.fr
Tel : +33 (0)4.50.36.13.85

2	28/06/10	N.P.	A.V.	E.M.
Iss	Date	Drawn	Checked	Approved
Item : Connector CMM220 male on cables AWG22, nn LF contacts, F22				

This document and drawings, sketches, and schematic drawings are the property of the NICOMATIC company, and no parts thereof may be reproduced and used without the written consent of the owner. Law dated 11.03.1902

Catalogue Reference : **221CnnF22**

	General tolerance ±0.2	Scale 2:1	Page 1/1
--	------------------------	-----------	----------