

# 4-Pin Full Pitch Mini-Flat Package Random-Phase Triac Driver Output Optocouplers

## FODM3011, FODM3012, FODM3022, FODM3023, FODM3052, FODM3053

### Description

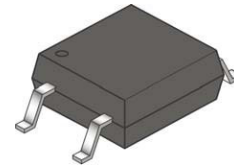
The FODM301X, FODM302X, and FODM305X series consists of a GaAs infrared emitting diode driving a silicon bilateral switch housed in a compact 4-pin mini-flat package. The lead pitch is 2.54 mm. They are designed for interfacing between electronic controls and power triacs to control resistive and inductive loads for 115 V/240 V operations.

### Features

- Compact 4-pin Surface Mount Package (2.4 mm Maximum Standoff Height)
- Peak Blocking Voltage
  - ◆ 250 V (FODM301X)
  - ◆ 400 V (FODM302X)
  - ◆ 600 V (FODM305X)
- Safety and Regulatory Approvals:
  - ◆ UL1577, 3,750 VAC<sub>RMS</sub> for 1 Minute
  - ◆ DIN-EN/IEC60747-5-5, 565 V Peak Working Insulation Voltage
- These are Pb-Free Devices

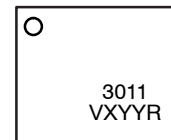
### Applications

- Industrial Controls
- Traffic Lights
- Vending Machines
- Solid State Relay
- Lamp Ballasts
- Solenoid/Valve Controls
- Static AC Power Switch
- Incandescent Lamp Dimmers
- Motor Control



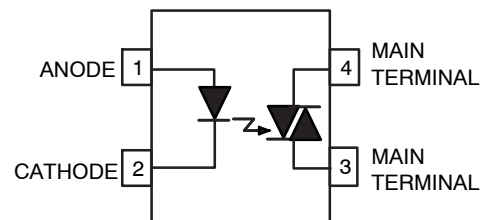
MFP-4  
CASE 100AP

### MARKING DIAGRAM



- 3011 = Specific Device Code  
 V = DIN EN/IEC60747-5-5 Option (only appears on component ordered with this option)  
 X = One Digit Year Code, e.g., "6"  
 YY = Digit Work Week, Ranging from "01" to "53"  
 R = Assembly Package Code

### FUNCTIONAL SCHEMATIC



### ORDERING INFORMATION

See detailed ordering and shipping information on page 8 of this data sheet.

# FODM3011, FODM3012, FODM3022, FODM3023, FODM3052, FODM3053

**SAFETY AND INSULATION RATINGS** (As per DIN EN/IEC 60747–5–5, this optocoupler is suitable for “safe electrical insulation” only within the safety limit data. Compliance with the safety ratings shall be ensured by means of protective circuits.)

Parameter		Characteristics
Installation Classifications per DIN VDE 0110/1.89 Table 1, For Rated Mains Voltage	<150 V <sub>RMS</sub>	I–IV
	<300 V <sub>RMS</sub>	I–III
Climatic Classification		40/100/21
Pollution Degree (DIN VDE 0110/1.89)		2
Comparative Tracking Index		175

Symbol	Parameter	Value	Unit
V <sub>PR</sub>	Input-to-Output Test Voltage, Method A, V <sub>IORM</sub> × 1.6 = V <sub>PR</sub> , Type and Sample Test with t <sub>m</sub> = 10 s, Partial Discharge < 5 pC	904	V <sub>peak</sub>
	Input-to-Output Test Voltage, Method B, V <sub>IORM</sub> × 1.875 = V <sub>PR</sub> , 100% Production Test with t <sub>m</sub> = 1 s, Partial Discharge < 5 pC	1060	V <sub>peak</sub>
V <sub>IORM</sub>	Maximum Working Insulation Voltage	565	V <sub>peak</sub>
V <sub>IOTM</sub>	Highest Allowable Over-Voltage	6000	V <sub>peak</sub>
	External Creepage	≥5	mm
	External Clearance	≥5	mm
DTI	Distance Through Insulation (Insulation Thickness)	≥0.4	mm
T <sub>S</sub>	Case Temperature (Note 1)	150	°C
I <sub>S,INPUT</sub>	Input Current (Note 1)	200	mA
P <sub>S,OUTPUT</sub>	Output Power (Note 1)	300	mW
R <sub>IO</sub>	Insulation Resistance at T <sub>S</sub> , V <sub>IO</sub> = 500 V (Note 1)	>10 <sup>9</sup>	Ω

1. Safety limit values – maximum values allowed in the event of a failure.

## ABSOLUTE MAXIMUM RATINGS (T<sub>A</sub> = 25°C, unless otherwise noted)

Symbol	Parameter	Value	Unit
--------	-----------	-------	------

### TOTAL PACKAGE

T <sub>STG</sub>	Storage Temperature	–55 to +150	°C
T <sub>OPR</sub>	Operating Temperature	–40 to +100	°C
T <sub>J</sub>	Junction Temperature	–40 to +125	°C
T <sub>SOL</sub>	Lead Solder Temperature	260 for 10 s	°C

### EMITTER

I <sub>F(avg)</sub>	Continuous Forward Current	60	mA
V <sub>R</sub>	Reverse Input Voltage	3	V
P <sub>D</sub>	Power Dissipation (No Derating Required over Operating Temp. Range)	100	mW

### DETECTOR

I <sub>TSM</sub>	Peak Non-Repetitive Surge Current (Single Cycle 60 Hz Sine Wave)		1	A <sub>(PEAK)</sub>
I <sub>TM(RMS)</sub>	On-State RMS Current		70	mA <sub>(RMS)</sub>
V <sub>DRM</sub>	Off-State Output Terminal Voltage	FODM3011, FODM3012	250	V
		FODM3022, FODM3023	400	
		FODM3052, FODM3053	600	
P <sub>D</sub>	Power Dissipation (No Derating Required over Operating Temp. Range)		300	mW

Stresses exceeding those listed in the Maximum Ratings table may damage the device. If any of these limits are exceeded, device functionality should not be assumed, damage may occur and reliability may be affected.

# FODM3011, FODM3012, FODM3022, FODM3023, FODM3052, FODM3053

## ELECTRICAL CHARACTERISTICS

(T<sub>A</sub> = 25°C unless otherwise specified)

### INDIVIDUAL COMPONENT CHARACTERISTICS

Symbol	Parameter	Device	Test Conditions	Min	Typ	Max	Unit
--------	-----------	--------	-----------------	-----	-----	-----	------

#### EMITTER

V <sub>F</sub>	Input Forward Voltage	All	I <sub>F</sub> = 10 mA	–	1.20	1.50	V
I <sub>R</sub>	Reverse Leakage Current	All	V <sub>R</sub> = 3 V, T <sub>A</sub> = 25°C	–	0.01	100	μA

#### DETECTOR

I <sub>DRM</sub>	Peak Blocking Current Either Direction	All	Rated V <sub>DRM</sub> , I <sub>F</sub> = 0 (Note 2)	–	2	100	nA
dv/dt	Critical Rate of Rise of Off-State Voltage	FODM3011, FODM3012, FODM3022, FODM3023	I <sub>F</sub> = 0 (Note 3)	–	10	–	V/μs
		FODM3052, FODM3053		1,000	–	–	

### TRANSFER CHARACTERISTICS

Symbol	Parameter	Device	Test Conditions	Min	Typ	Max	Unit
I <sub>FT</sub>	LED Trigger Current	FODM3011, FODM3022, FODM3052	Main Terminal Voltage = 3 V (Note 4)	–	–	10	mA
		FODM3012, FODM3023, FODM3053		–	–	5	
I <sub>H</sub>	Holding Current, Either Direction	All		–	450	–	μA
V <sub>TM</sub>	Peak On-State Voltage Either Direction	All	I <sub>TM</sub> = 100 mA peak	–	2.2	3	V

### ISOLATION CHARACTERISTICS

Symbol	Parameter	Device	Test Conditions	Min	Typ	Max	Unit
V <sub>ISO</sub>	Steady State Isolation Voltage	All	1 Minute, R.H. = 40% to 60%	3,750	–	–	VAC <sub>RMS</sub>

Product parametric performance is indicated in the Electrical Characteristics for the listed test conditions, unless otherwise noted. Product performance may not be indicated by the Electrical Characteristics if operated under different conditions.

- Test voltage must be applied within dv/dt rating.
- This is static dv/dt. Commutating dv/dt is function of the load-driving thyristor(s) only.
- All devices are guaranteed to trigger at an I<sub>F</sub> value of less than or equal to the max I<sub>FT</sub> specification. For optimum operation over temperature and lifetime of the device, the LED should be biased with an I<sub>F</sub> that is at least 50% higher than the maximum I<sub>FT</sub> specification. The I<sub>FT</sub> should not exceed the absolute maximum rating of 60 mA. Example: For FODM3053M, the minimum I<sub>F</sub> bias should be 5 mA x 150% = 7.5 mA.

TYPICAL PERFORMANCE CHARACTERISTICS

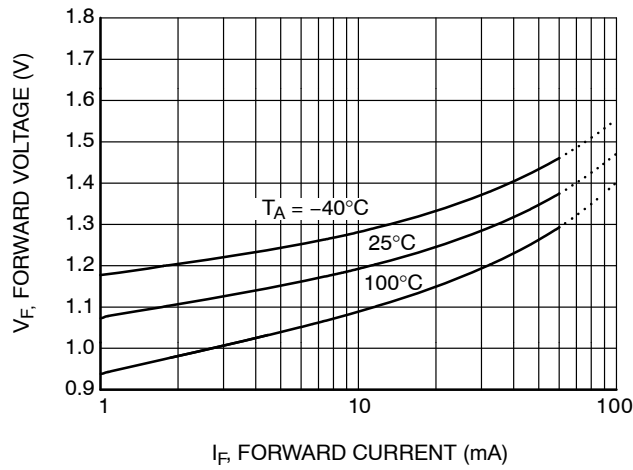


Figure 1. LED Forward Voltage vs. Forward Current

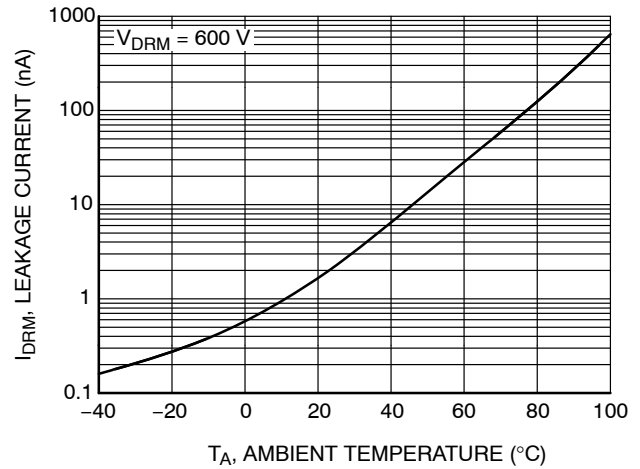


Figure 2. Leakage Current vs. Ambient Temperature

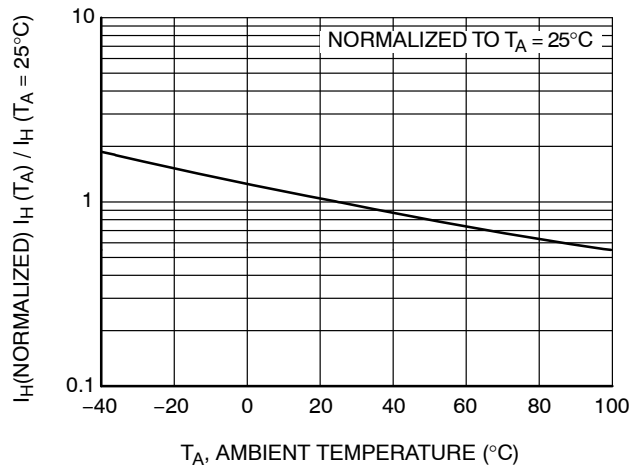


Figure 3. Normalized Holding Current vs. Ambient Temperature

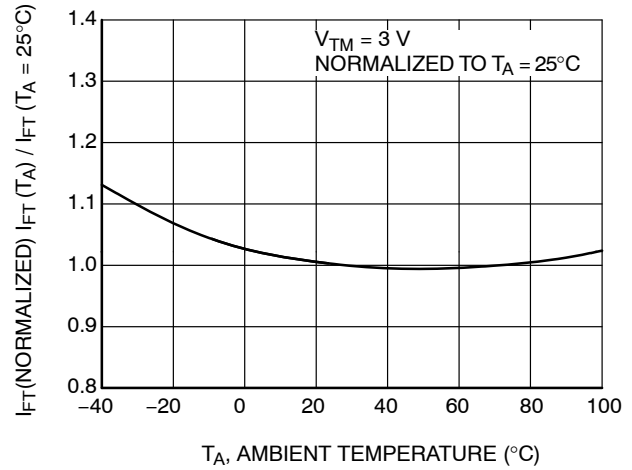


Figure 4. Normalized Trigger Current vs. Ambient Temperature

TYPICAL PERFORMANCE CHARACTERISTICS (continued)

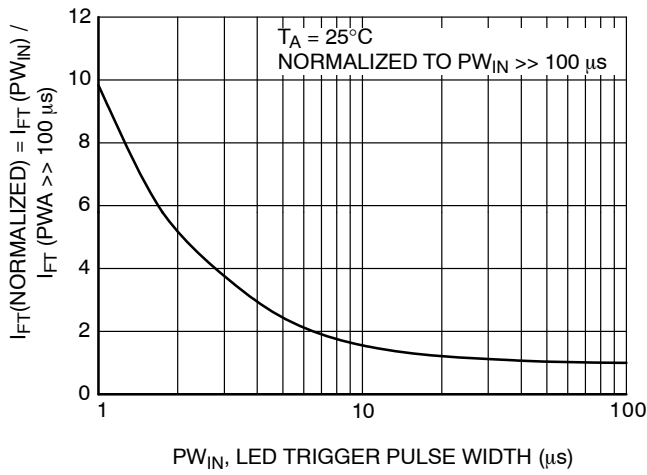


Figure 5. LED Current Required to Trigger vs. LED Pulse Width

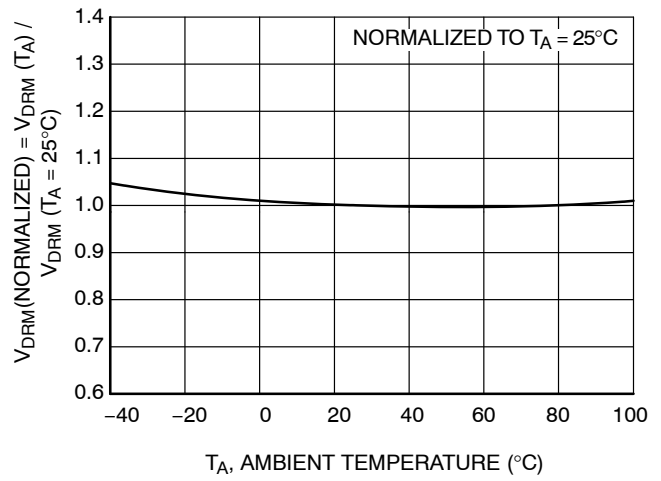


Figure 6. Normalized Off-State Output Terminal Voltage vs. Ambient Temperature

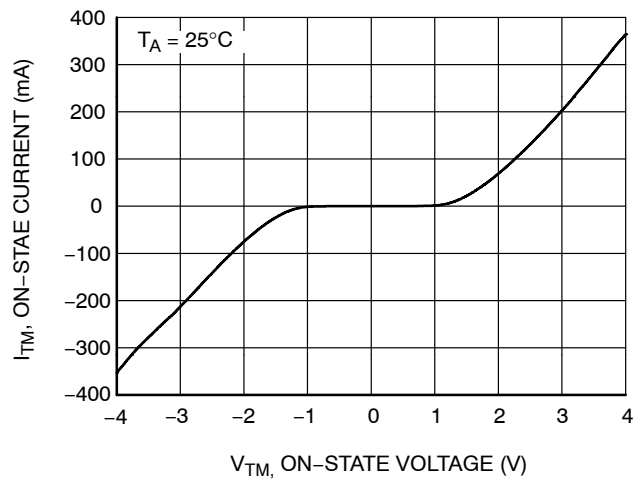


Figure 7. On-State Characteristics

TYPICAL APPLICATION INFORMATION

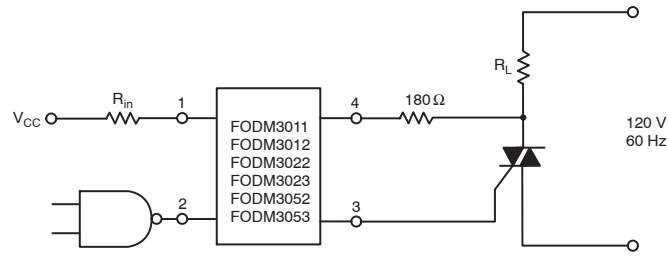


Figure 8. Resistive Load

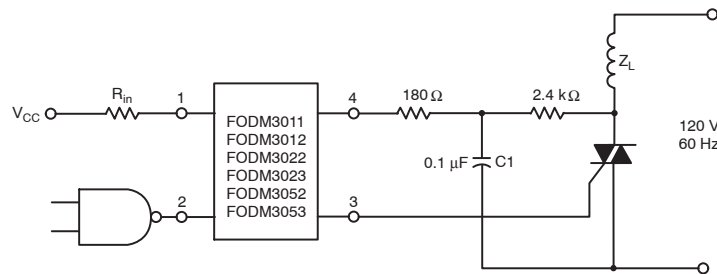
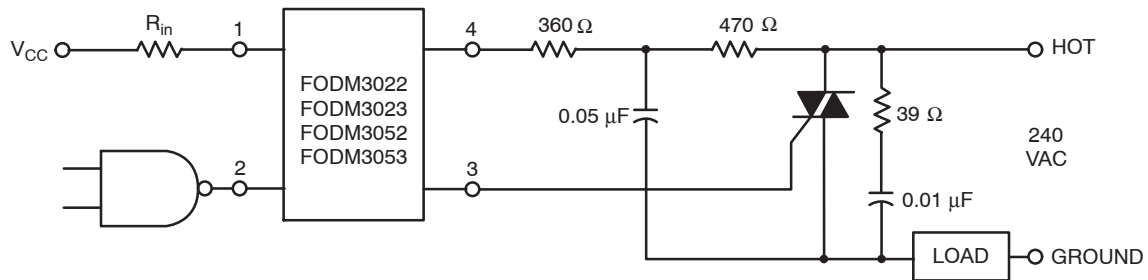


Figure 9. Inductive Load with Sensitive Gate Triac ( $IGT \leq 15 \text{ mA}$ )



In this circuit the "hot" side of the line is switched and the load connected to the cold or ground side. The  $39 \Omega$  resistor and  $0.01 \mu\text{F}$  capacitor are for snubbing of the triac, and the  $470 \Omega$  resistor and  $0.05 \mu\text{F}$  capacitor are for snubbing the coupler. These components may or may not be necessary depending upon the particular and load used.

Figure 10. Typical Application Circuit

## REFLOW PROFILE

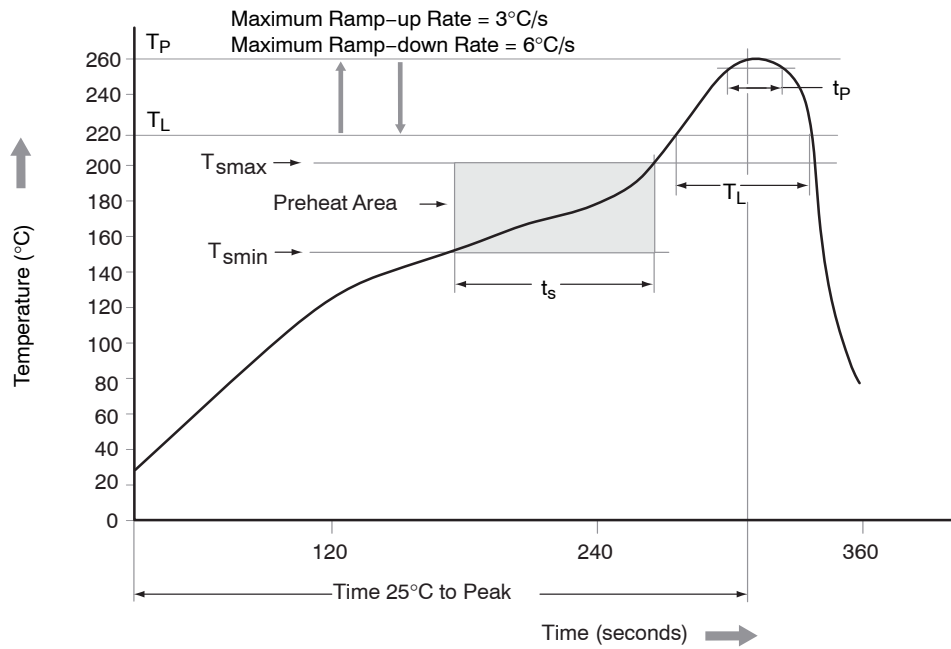


Figure 11. Reflow Profile

Table 1. REFLOW PROFILE

Profile Feature	Pb-Free Assembly Profile
Temperature Minimum ( $T_{smin}$ )	150°C
Temperature Maximum ( $T_{smax}$ )	200°C
Time ( $t_s$ ) from ( $T_{smin}$ to $T_{smax}$ )	60 – 120 seconds
Ramp-up Rate ( $t_L$ to $t_P$ )	3°C/second maximum
Liquidous Temperature ( $T_L$ )	217°C
Time ( $t_L$ ) Maintained Above ( $T_L$ )	60 – 150 seconds
Peak Body Package Temperature	260°C +0°C / -5°C
Time ( $t_P$ ) within 5°C of 260°C	30 seconds
Ramp-down Rate ( $T_P$ to $T_L$ )	6°C/second maximum
Time 25°C to Peak Temperature	8 minutes maximum

## FODM3011, FODM3012, FODM3022, FODM3023, FODM3052, FODM3053

### ORDERING INFORMATION (Note 5)

Part Number	Package	Shipping <sup>†</sup>
FODM3011–NF098	Full Pitch Mini–Flat 4–Pin	100 Units / Tube
FODM3011R2–NF098	Full Pitch Mini–Flat 4–Pin	2500 / Tape & Reel
FODM3011V–NF098	Full Pitch Mini–Flat 4–Pin, DIN EN/IEC60747–5–5 Option	100 Units / Tube
FODM3011R2V–NF098	Full Pitch Mini–Flat 4–Pin, DIN EN/IEC60747–5–5 Option	2500 / Tape & Reel

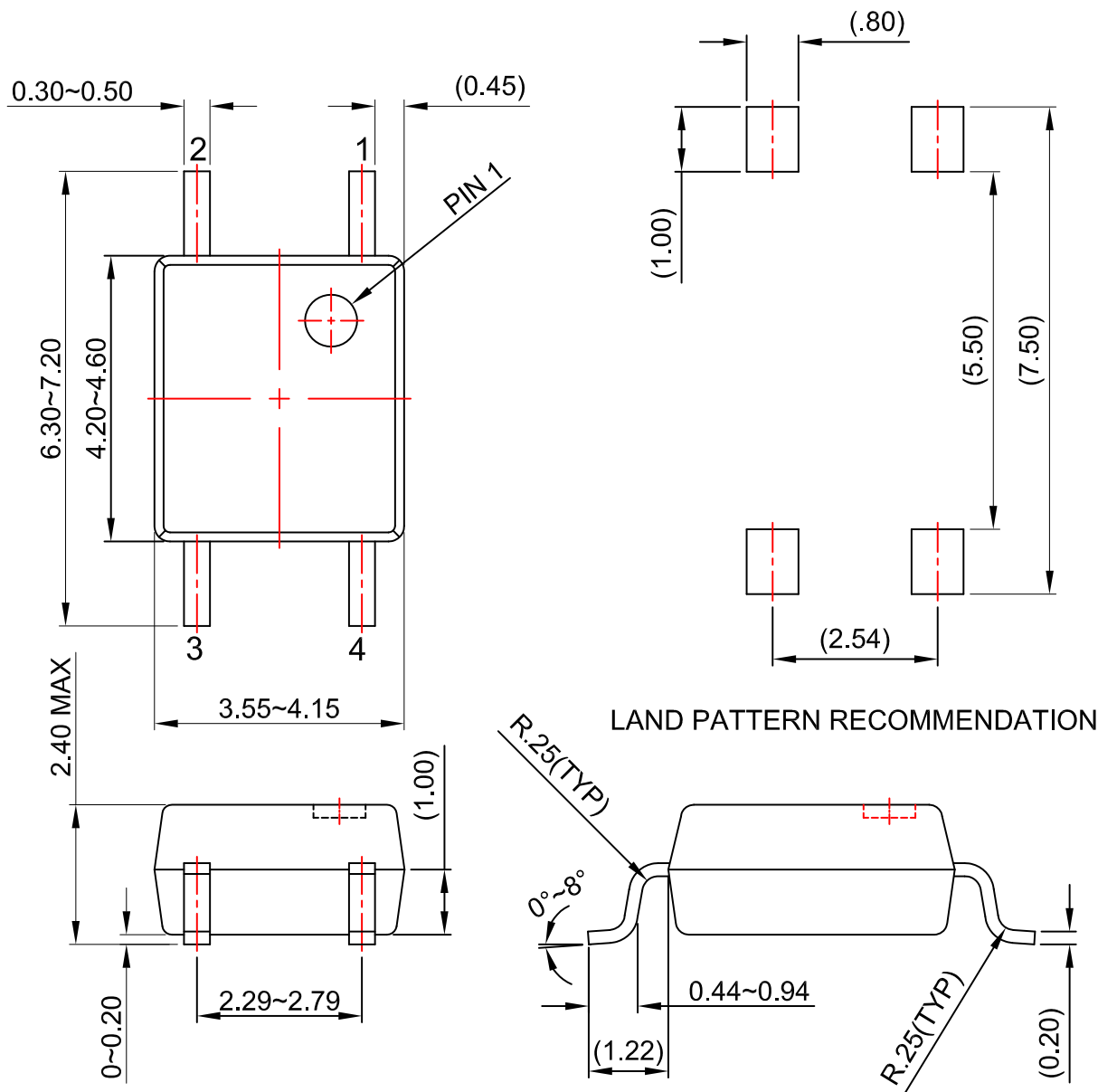
<sup>†</sup>For information on tape and reel specifications, including part orientation and tape sizes, please refer to our Tape and Reel Packaging Specifications Brochure, BRD8011/D.

5. The product orderable part number system listed in this table also applies to the FODM3012, FODM3022, FODM3023, FODM3052, and FODM3053 products.



**MFP4 3.85X4.4, 2.54P**  
CASE 100AP  
ISSUE O


DATE 31 AUG 2016



**NOTES:**

- A) NO STANDARD APPLIES TO THIS PACKAGE.
- B) ALL DIMENSIONS ARE IN MILLIMETERS.
- C) DIMENSIONS ARE EXCLUSIVE OF BURRS, MOLD FLASH, AND TIE BAR EXTRUSION

<b>DOCUMENT NUMBER:</b>	<b>98AON13488G</b>	Electronic versions are uncontrolled except when accessed directly from the Document Repository. Printed versions are uncontrolled except when stamped "CONTROLLED COPY" in red.
<b>DESCRIPTION:</b>	<b>MFP4 3.85X4.4, 2.54P</b>	<b>PAGE 1 OF 1</b>

ON Semiconductor and  are trademarks of Semiconductor Components Industries, LLC dba ON Semiconductor or its subsidiaries in the United States and/or other countries. ON Semiconductor reserves the right to make changes without further notice to any products herein. ON Semiconductor makes no warranty, representation or guarantee regarding the suitability of its products for any particular purpose, nor does ON Semiconductor assume any liability arising out of the application or use of any product or circuit, and specifically disclaims any and all liability, including without limitation special, consequential or incidental damages. ON Semiconductor does not convey any license under its patent rights nor the rights of others.

**onsemi**, **Onsemi**, and other names, marks, and brands are registered and/or common law trademarks of Semiconductor Components Industries, LLC dba "**onsemi**" or its affiliates and/or subsidiaries in the United States and/or other countries. **onsemi** owns the rights to a number of patents, trademarks, copyrights, trade secrets, and other intellectual property. A listing of **onsemi**'s product/patent coverage may be accessed at [www.onsemi.com/site/pdf/Patent-Marking.pdf](http://www.onsemi.com/site/pdf/Patent-Marking.pdf). **onsemi** reserves the right to make changes at any time to any products or information herein, without notice. The information herein is provided "as-is" and **onsemi** makes no warranty, representation or guarantee regarding the accuracy of the information, product features, availability, functionality, or suitability of its products for any particular purpose, nor does **onsemi** assume any liability arising out of the application or use of any product or circuit, and specifically disclaims any and all liability, including without limitation special, consequential or incidental damages. Buyer is responsible for its products and applications using **onsemi** products, including compliance with all laws, regulations and safety requirements or standards, regardless of any support or applications information provided by **onsemi**. "Typical" parameters which may be provided in **onsemi** data sheets and/or specifications can and do vary in different applications and actual performance may vary over time. All operating parameters, including "Typicals" must be validated for each customer application by customer's technical experts. **onsemi** does not convey any license under any of its intellectual property rights nor the rights of others. **onsemi** products are not designed, intended, or authorized for use as a critical component in life support systems or any FDA Class 3 medical devices or medical devices with a same or similar classification in a foreign jurisdiction or any devices intended for implantation in the human body. Should Buyer purchase or use **onsemi** products for any such unintended or unauthorized application, Buyer shall indemnify and hold **onsemi** and its officers, employees, subsidiaries, affiliates, and distributors harmless against all claims, costs, damages, and expenses, and reasonable attorney fees arising out of, directly or indirectly, any claim of personal injury or death associated with such unintended or unauthorized use, even if such claim alleges that **onsemi** was negligent regarding the design or manufacture of the part. **onsemi** is an Equal Opportunity/Affirmative Action Employer. This literature is subject to all applicable copyright laws and is not for resale in any manner.

## PUBLICATION ORDERING INFORMATION

### LITERATURE FULFILLMENT:

Email Requests to: [orderlit@onsemi.com](mailto:orderlit@onsemi.com)

**onsemi Website:** [www.onsemi.com](http://www.onsemi.com)

### TECHNICAL SUPPORT

**North American Technical Support:**

Voice Mail: 1 800-282-9855 Toll Free USA/Canada

Phone: 011 421 33 790 2910

**Europe, Middle East and Africa Technical Support:**

Phone: 00421 33 790 2910

For additional information, please contact your local Sales Representative