

SEED-102070004

Sonoff RFR3 Wi-Fi Smart Switch



PRODUCT DETAILS

Key Features

- Remote ON/OFF–Turn electrical devices on/off from anywhere
- App Support –Free iOS and Android mobile App eWeLink
- LAN Control –Turn on/off the device even when WiFi has no Internet access
- Sync Status–Real-time device status provided to App
- Timing–Set scheduled/countdown/loop timers to turn on/off at specified time
- Share Control– Control your smart home together with your family
- Scene–Turn on/off a gang of devices with one tap
- Smart Scene–Triggered on/off by temp, hum or other environmental conditions from sensor
- Compatibility –Works perfectly with Amazon Alexa, Google Assistant, IFTTT, Google Nest
- DIY mode

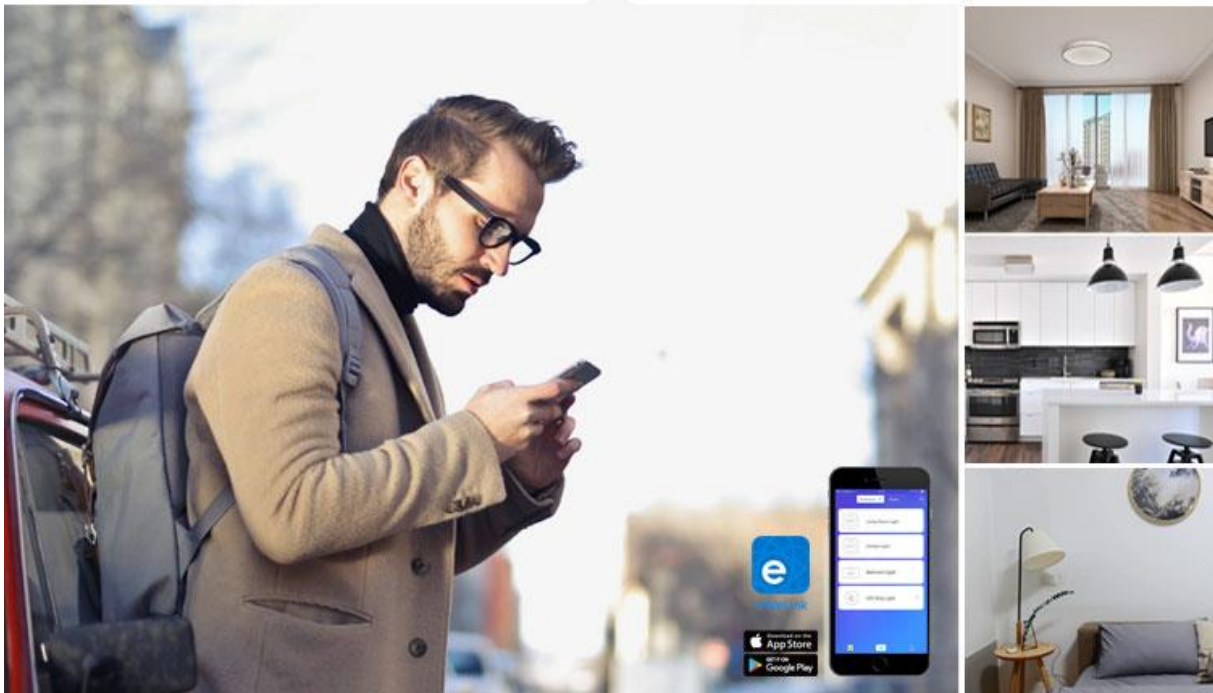
Description

Home automation is "The Internet of Things". It simply means the way all devices or appliances are networked together to provide users with a seamless control over their home equipment.

Sonoff RF is a household switch which can support Wi-Fi communication with your smartphone from long distance. The Wi-Fi electrical switch transmits data to a cloud platform through the Wi-Fi Router. Users can control the connected appliances remotely via a mobile application - eWeLink. The server of the Sonoff Wi-Fi switch is Amazon AWS global server. As a matter of fact, users around the world can use this smart switch.

APP Remote Control

Just tap on eWeLink App to turn on a light anytime and anywhere.
A lighted house anticipates your arrival



Hands-Free Voice Control

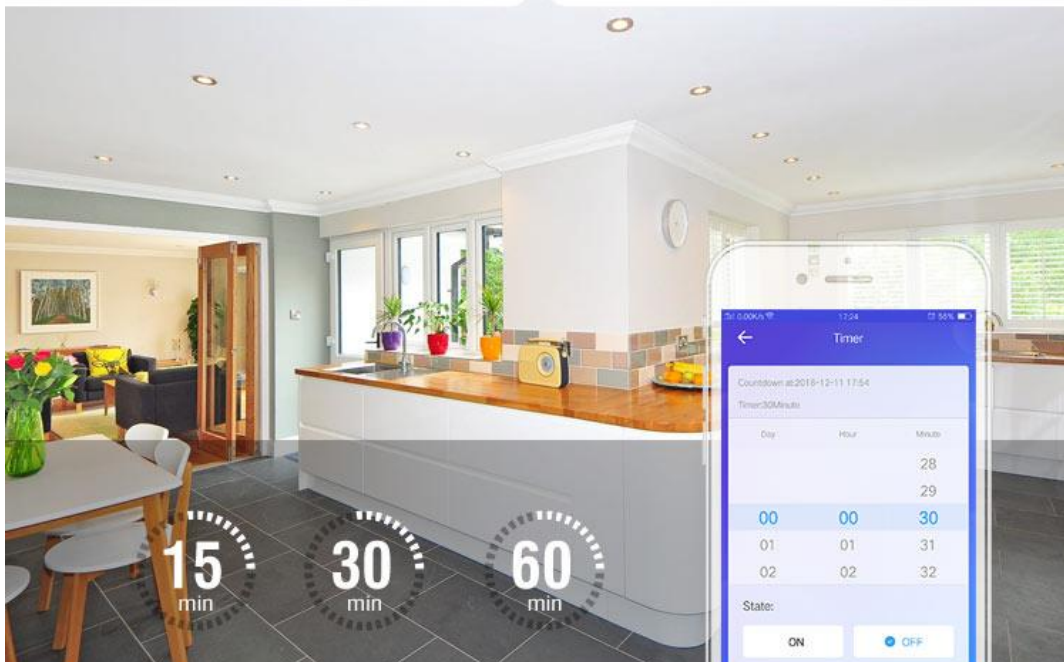
Compatible with Alexa & Google Home, the smart switch allows you to control lights on/off with your voice



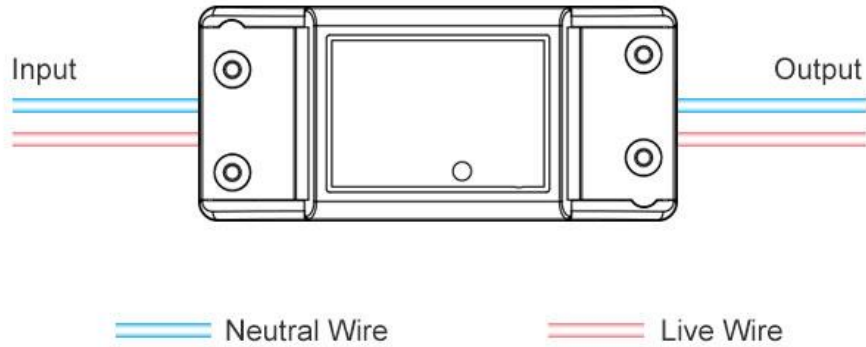
Timer & Schedule

Set up timing schedules to save the trouble of overcooking the dish

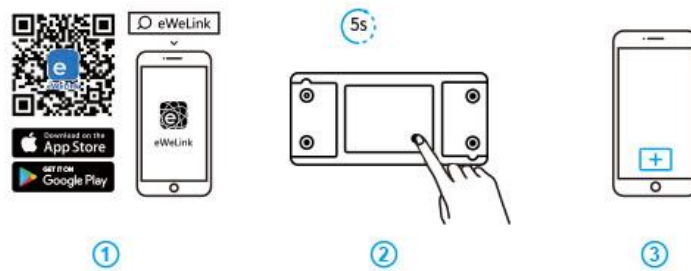
Single / Repeat / Countdown / Loop Timer



Wiring Diagram



Quick Start



Specification

- Voltage Input: 90-250V AC(50/60Hz)
- Max. Current: 10A
- Max. Power: 2200W
- Dimensions: 88*38*23mm (L*W*H)
- Wireless Standard: 802.11 b/g/n & 433.92MHz RF
- Humidity: 5%-90%RH, Non-condensing
- Operating Temperature: 0°C-40°C(32°F-104°F)
- Enclosure Material: Fire-retardant ABS V0
- Weight: 52g
- Gang: 1
- Color: White

Hardware Overview

