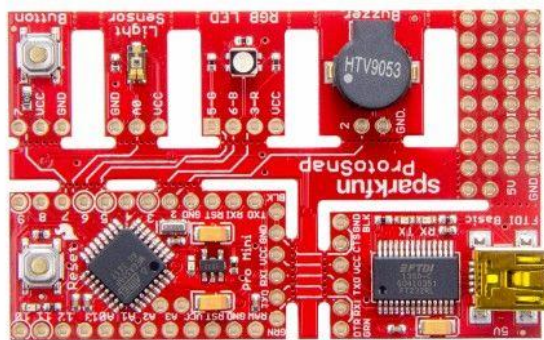


SEEED - KIT10311M

ProtoSnap - LilyPad E-Sewing Kit



PRODUCT DETAILS

The Protosnap - Pro Mini integrates the MCU and button, light sensor, RGB LED, and a buzzer in to one board, so that you don't have to solder or use jump wires and can get started quickly.

The FDTI port allows you connecting your computer to this Proto board directly and program the sensor and output using the MCU without having to plug any of the circuits in your breadboard.

Technical details

Dimensions	100mm x75mm x6mm
Weight	G.W 11g
Battery	Exclude

Part List

ProtoSnap - Pro Mini	1
----------------------	---