

# Coral M.2 Accelerator with Dual Edge TPU

---



## SKU

102110449

The Coral M.2 Accelerator with Dual Edge TPU is an M.2 module that brings two Edge TPU coprocessors to existing systems and products with an available M.2 E-key slot.

## PRODUCT DETAILS

---

### Features

---

**Performs high-speed ML inferencing:** Each Edge TPU coprocessor is capable of performing 4 trillion operations per second (4 TOPS), using 2 watts of power. For example, it can execute state-of-the-art mobile vision models such as MobileNet v2 at almost 400 FPS, in a power-efficient manner. With the two Edge TPUs in this module, you can double the inferences per second (8 TOPS) in several ways, such as by running two models in parallel or pipelining one model across both Edge TPUs.

**Works with Debian Linux and Windows:** Integrates with Debian-based Linux or Windows 10 systems with a compatible card module slot.

**Supports TensorFlow Lite:** No need to build models from the ground up. TensorFlow Lite models can be compiled to run on the Edge TPU.

**Supports AutoML Vision Edge:** Easily build and deploy fast, high-accuracy custom image classification models to your device with AutoML Vision Edge.

## Description

---

The Coral M.2 Accelerator with Dual Edge TPU is an M.2 module that brings two Edge TPU coprocessors to existing systems and products with an available M.2 E-key slot.

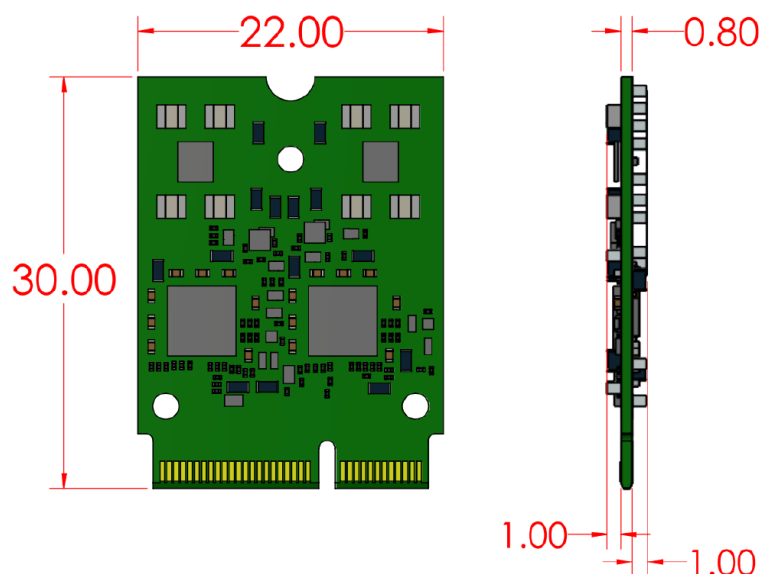
## Specifications

---

|                       |   |
|-----------------------|---|
| <b>ML accelerator</b> | <b>2x Google Edge TPU coprocessor:<br/>8 TOPS (int8); 2 TOPS per watt</b> |
| Hardware Interface    | M.2 E-key (M.2-2230-D3-E)   |
| Serial Interface      | Two PCIe Gen2 x1  |
| Operating Voltage     | 3.3V +/- 10%  |
| Storage Temperature   | -40 to +85°C  |
| Operating Temperature | -40 to +85°C  |
| Relative Humidity     | 0 to 90% (non-condensing)   |

## Dimensions

---



## Part List

---

1 x Coral M2 Accelerator with Dual Edge TPU

## ECCN/HTS

---

HSCODE 8471800000

---

UPC