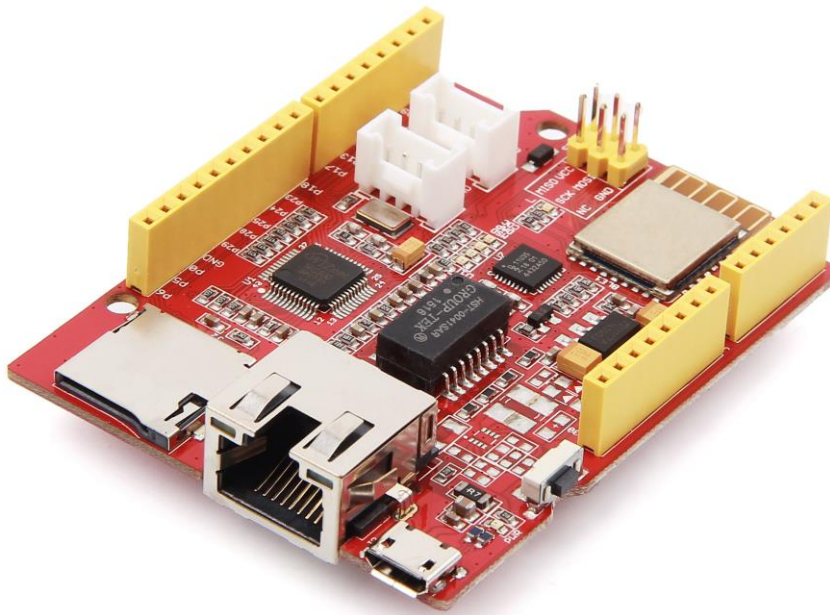


SEEED-102080006

Arch Link



PRODUCT DETAILS

Arch Link is an mbed enabled development board based on Nordic nRF51822 and WIZnet W5500 ethernet interface. With Arduino form factor, Grove connectors and micro SD interface, it is extremely easy to create a bluetooth low energy device.

Features

mbed enabled

- Online IDE
- Easy to use C/C++ SDK

- Handy libraries

CMSIS DAP based on LPC11U35

- Drag-n-drop programming
- Debug using CMSIS DAP standard
- USB virtual serial for communication

Arduino form factor with Grove connectors

- I2C and UART connector on board

Nordic nRF51822 Multi-protocol Bluetooth® 4.0 low energy/2.4GHz RF SoC

- ARM Cortex M0 processor
- 256kB flash/16kB RAM
- Configurable I/O mapping for digital I/O

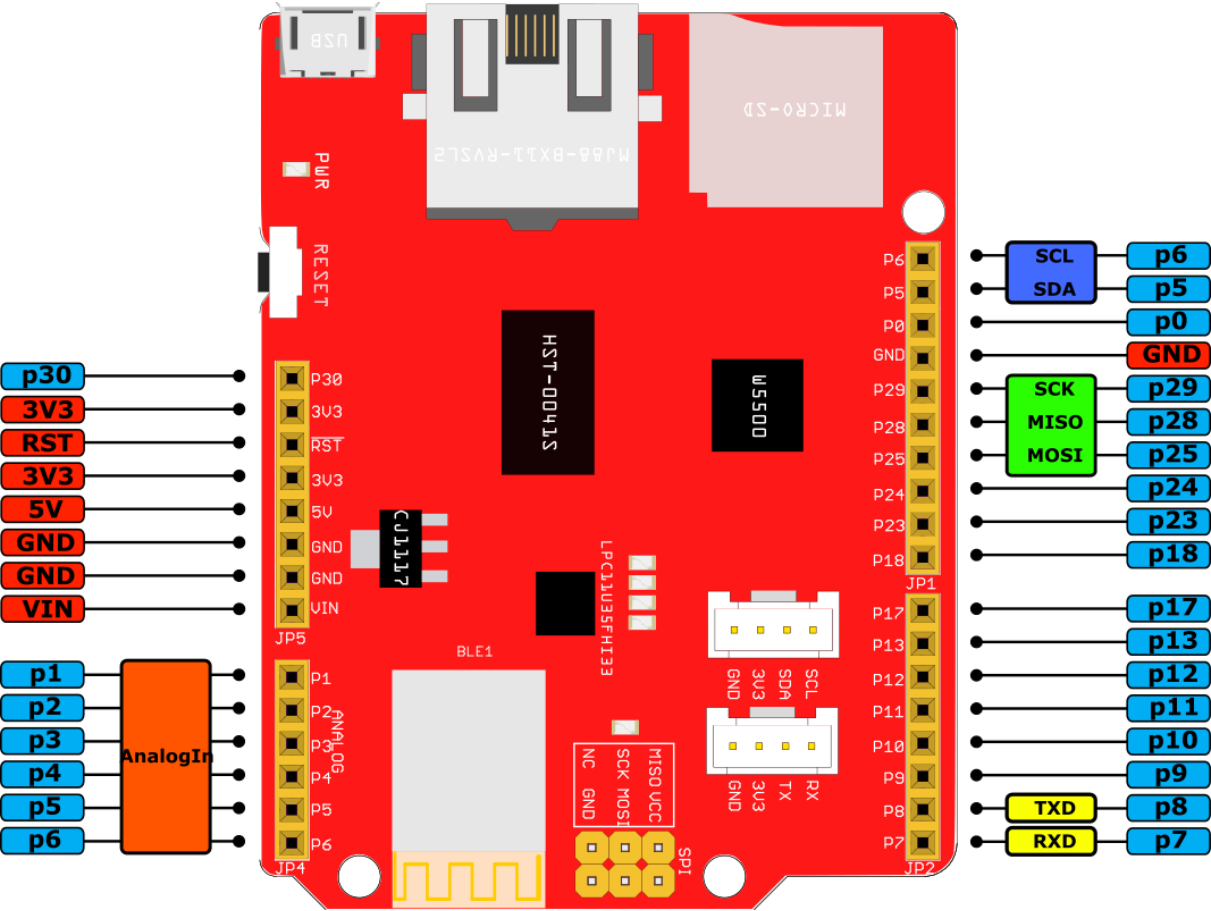
WIZnet W5500 Ethernet

- Supports following Hardwired TCP/IP Protocols : TCP, UDP, ICMP, IPv4, ARP, IGMP, PPPoE
- Supports Power down mode
- Supports Wake on LAN over UDP
- Supports High Speed Serial Peripheral Interface(SPI MODE 0, 3)
- Internal 32Kbytes Memory for Tx/Rx Buffers
- 10BaseT/100BaseTX Ethernet PHY embedded
- with RJ45 connector

USB Micro B connector

Micro SD Card connector

Pinout



Technical details

Dimensions	115mm x75mm x25mm
Weight	G.W 45g
Battery	Exclude

Part List

Arch Link	1
-----------	---