

MICRO SWITCH

A DIVISION OF MINNEAPOLIS-HONEYWELL REGULATOR COMPANY
FREEPORT, ILLINOIS

FED. MFR. CODE 91929

ACTUATOR - SWITCH

CATALOG LISTING

JE - 61

5

JE - 61

M

DRAWING NUMBER

9

ISSUE

17 MAY 60

19 JULY 59

23 SEP 63

12 JUNE 67

17 MAY 80

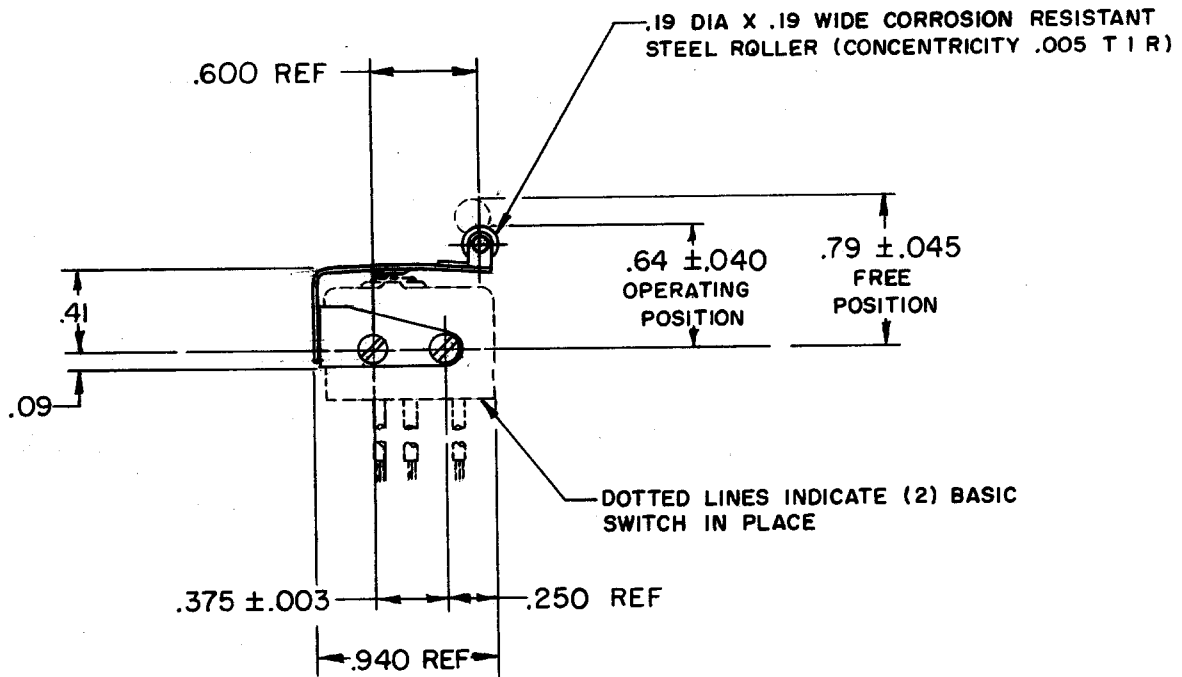
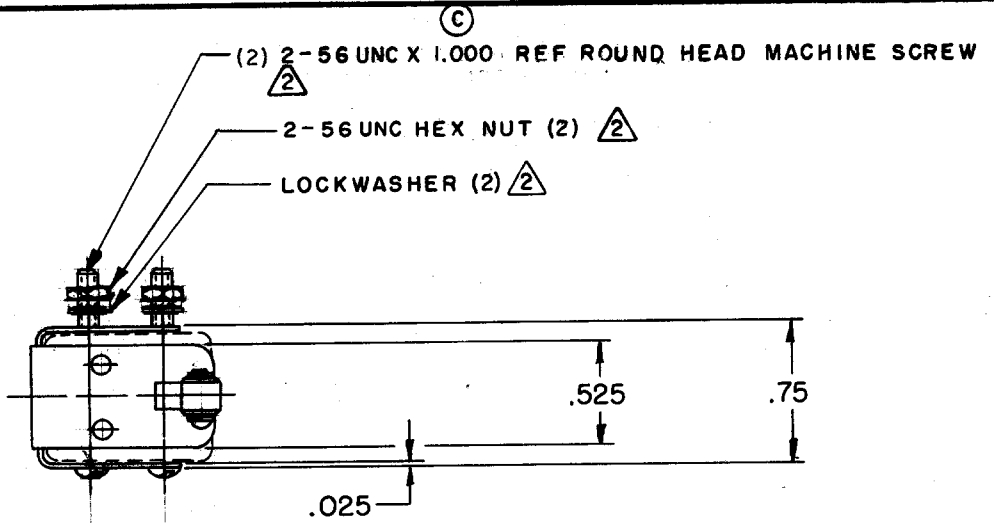
14 APR 87

25 NOV 92

6 MAR 95

REPLACES SR 8992
RELEASE NO. SR 8992
CHECK 17 MAY 60
CHECK 19 JULY 59
CHECK 23 SEP 63
CHECK 12 JUNE 67
CHECK 17 MAY 80
CHECK 14 APR 87
CHECK 25 NOV 92
CHECK 6 MAR 95

REVISIONS	
A	SR 8992 M B F 12 MAY 60
B	CO 16256 M B F 13 SEP 61
C	CO 18480 VDF 23 SEP 63
D	CO 22954 M B F 12 JUNE 67
E	CO 47771 C J H 17 MAY 80
F	CO 61293 W J M 14 APR 87
G	CO 74078 L J F 25 NOV 92
H	CO 79303 D L T 6 MAR 95



NOTE -
 (B) - SWITCHES DO NOT NECESSARILY OPERATE SIMULTANEOUSLY
 - FURNISHED UNASSEMBLED

THIS DRAWING COVERS A PROPRIETARY ITEM AND IS THE PROPERTY OF MICRO SWITCH, A DIVISION OF MINNEAPOLIS-HONEYWELL REGULATOR CO. THIS DRAWING IS NOT TO BE COPIED OR USED WITHOUT THE APPROVAL OF MICRO SWITCH.

CHARACTERISTICS
 (D) OVERTRAVEL ----- .005 MIN

ELECTRICAL DATA
 CONTACT ARRANGEMENT

SCALE FULL
 DO NOT SCALE PRINT
 UNLESS OTHERWISE SPECIFIED
 DIMENSIONS ARE IN INCHES
TOLERANCES ARE:
 ONE PLACE (.0) ±.030
 TWO PLACE (.00) ±.015
 THREE PLACE (.000) ±.005
 ANGLES ±
WEIGHT

FO-50378
 DRAWN
 K L B 10 JULY 59