



MICRO SWITCH
 FREEPORT, ILLINOIS, U.S.A.
 A DIVISION OF HONEYWELL

FED. MFG. CODE 91929

PACKET

CATALOG LISTING
6 PA SERIES

CHART 3

THIS DRAWING COVERS A PROPRIETARY ITEM AND IS THE PROPERTY OF MICRO SWITCH, A DIVISION OF MINNEAPOLIS-HONEYWELL REGULATOR CO. THIS DRAWING IS NOT TO BE COPIED OR USED WITHOUT THE APPROVAL OF MICRO SWITCH.

M
6 PA SERIES
CHART 3

M

DRAWING NUMBER

*** 2**

ISSUE

CHECK

REVISIONS
 A CO26508
 M B S
 24 OCT 69

CHECK

BRJ 14 SEP 65

CHECK

LSD 14 SEP 65

CHECK

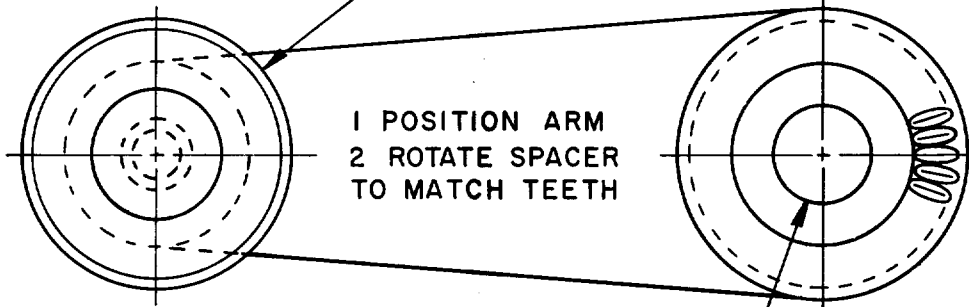
OMW 14 SEP 65

CHECK

RELEASE NO. SR 11974

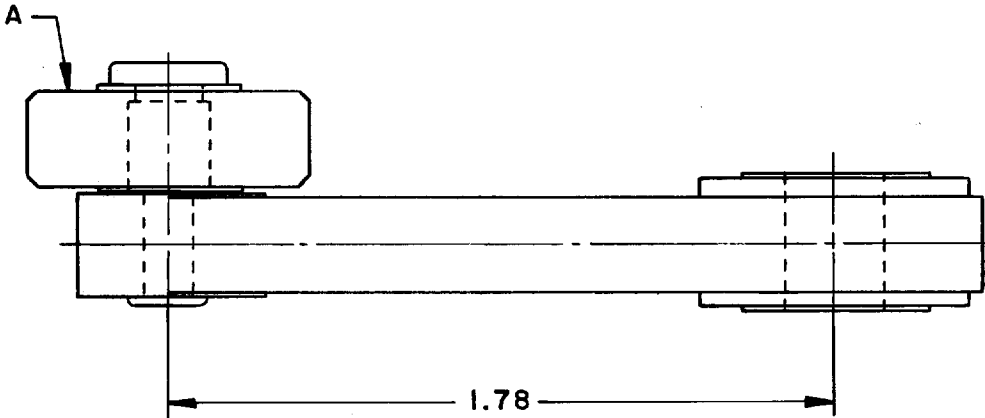
REPLACES

.875 ± .030 DIA X .300 WIDE ROLLER



1 POSITION ARM
 2 ROTATE SPACER
 TO MATCH TEETH

.265 DIA HOLE



1.78

CAT. LISTING	A
6 PA110	NYLON
6 PA118	STEEL

UNLESS OTHERWISE SPECIFIED
TOLERANCES ARE:
 ONE PLACE (.0) ±.030
 TWO PLACE (.00) ±.015
 THREE PLACE (.000) ±.005
 ANGLES ±
 RAW MATERIAL - COMMERCIAL STANDARD
 DIMENSIONS ARE IN INCHES AND ARE
 TO BE MET BEFORE PROTECTIVE
 COATINGS ARE APPLIED