

MICRO SWITCH

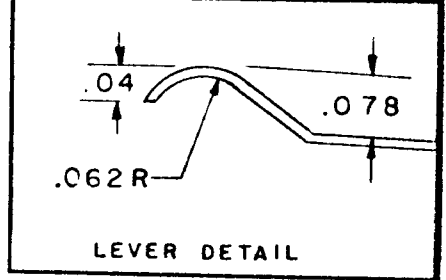
A DIVISION OF MINNEAPOLIS-HONEYWELL REGULATOR COMPANY
 FEDERAL MANUFACTURING CODE 91929

ACTUATOR-SWITCH

CATALOG LISTING

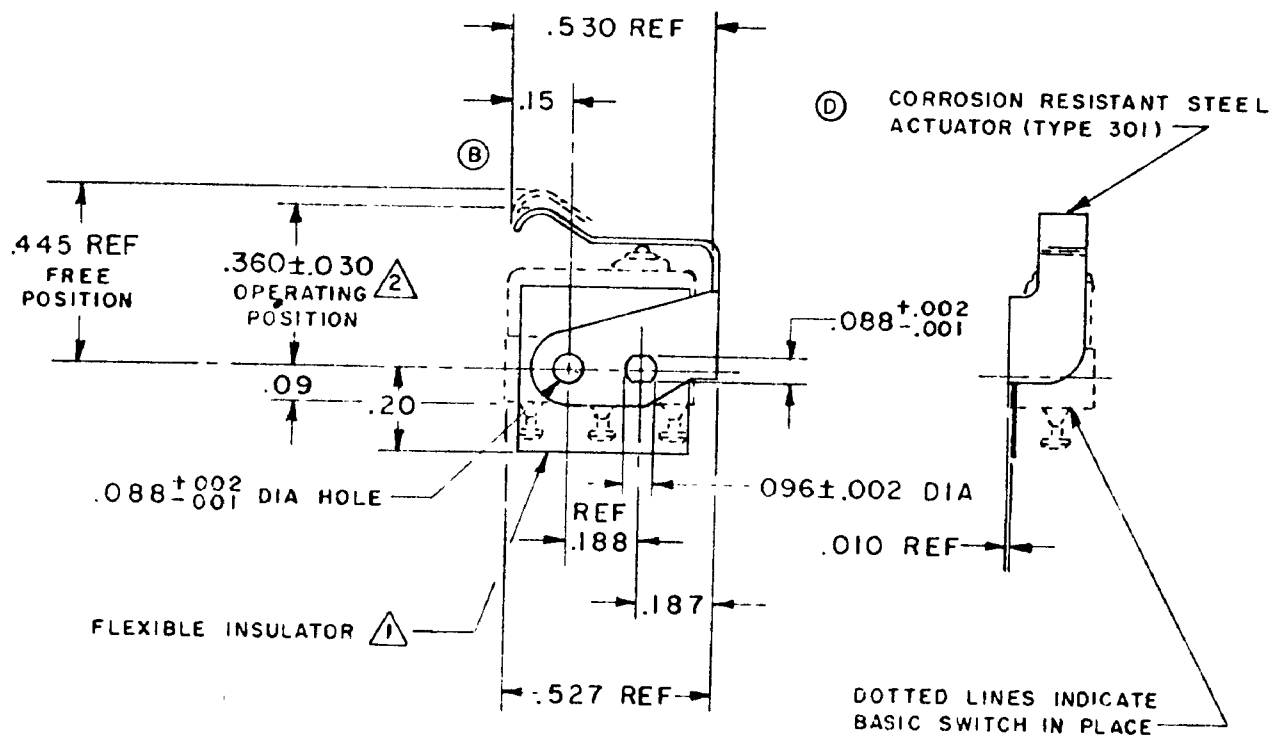
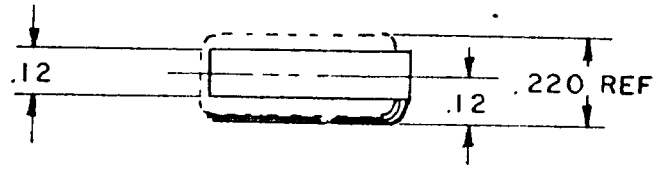
JX-70

(M) JX-70
 ISSUE 1



JX-70
 DRAWING NUMBER
 M
 287
 ISSUE
 288
 289

RELEASE NO. SR 9963
 REPLACES



NOTE—
 1 FURNISHED UNASSEMBLED
 2 SLIGHT ROTATION BETWEEN BASIC AND ACTUATOR MAY BE NECESSARY TO OBTAIN OPERATING POSITION, BASED ON USING NO. 2-56 MACHINE SCREWS

THIS DRAWING COVERS A PROPRIETARY ITEM AND IS THE PROPERTY OF MICRO SWITCH. A DIVISION OF MINNEAPOLIS-HONEYWELL REGULATOR CO THIS DRAWING IS NOT TO BE COPIED OR USED WITHOUT THE APPROVAL OF MICRO SWITCH.

CHARACTERISTICS WITH ISX1-T BASIC SWITCH INSTALLED	
OPERATING FORCE	9 OZ MAX
RELEASE FORCE	2 OZ MIN
DIFFERENTIAL TRAVEL	.025 MAX
OVERTRAVEL	.015 MIN

ELECTRICAL DATA	
CONTACT ARRANGEMENT	BREAK DISTANCE

SCALE 2 TO 1
 DO NOT SCALE PRINT
 UNLESS OTHERWISE SPECIFIED
 DIMENSIONS ARE IN INCHES
TOLERANCES ARE:
 ONE PLACE (0) ±.030
 TWO PLACE (00) ±.018
 THREE PLACE (000) ±.008
 ANGLES 1
 WEIGHT

REVISIONS

A	SR 9963	M B F	27 NOV 61
B	CO18136	M B F	17 JUNE 63
C	CO22579	OMW	MAY 67
D	CO22579	M B S	19 APR 68
E	CO79303	DLT	9 MAR 95
F	CO82929	DLT	13 MAY 96

CHECK
 CHECK
 DRAWN
 M B F
 27 NOV 61