

# MICRO SWITCH

A DIVISION OF MINNEAPOLIS-HONEYWELL REGULATOR COMPANY  
 FREEPORT, MINNESOTA  
 FED. MFR. CODE 91929

# ACTUATOR-SWITCH

CATALOG LISTING

JX-58

JX-58

M

DRAWING NUMBER

88

88

ISSUE

88

REPLACES

RELEASE NO. SR 9424

CHECK 9 SEP 60

CHECK BLS

CHECK 12 SEP 60

CHECK RJP

CHECK 28 APR 67

CHECK 19 APR 68

CHECK 17 MAY 80

CHECK 8 MAR 95

CHECK 14 SEP 05

CHECK 13 MAY 96

CHECK 0015428

CHECK 14 SEP 05

CHECK RJ

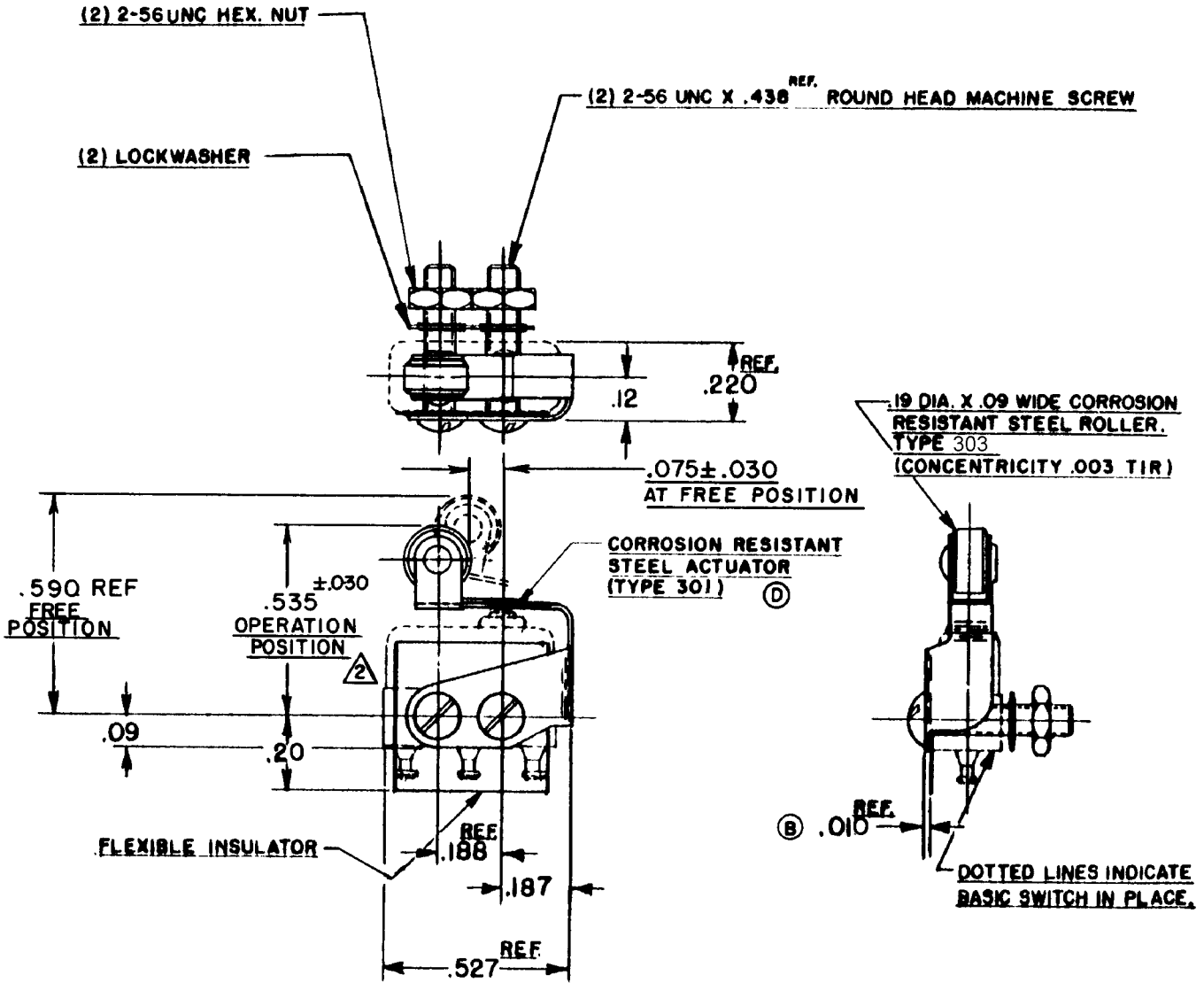
CHECK 9 SEP 60

CHECK 9 SEP 60

CHECK 9 SEP 60

CHECK 9 SEP 60

CHECK 9 SEP 60



**NOTE -**

- 1 - SCREWS, NUTS, LOCKWASHERS AND INSULATOR FURNISHED UNASSEMBLED.
- (A) SLIGHT ROTATION BETWEEN BASIC AND ACTUATOR MAY BE NECESSARY TO OBTAIN OPERATING POSITION

THIS DRAWING COVERS A PROPRIETARY ITEM AND IS THE PROPERTY OF MICRO SWITCH, A DIVISION OF MINNEAPOLIS-HONEYWELL REGULATOR CO. THIS DRAWING IS NOT TO BE COPIED OR USED WITHOUT THE APPROVAL OF MICRO SWITCH.

CHARACTERISTICS WITH 15X1-T BASIC SWITCH INSTALLED		ELECTRICAL DATA		SCALE 2 TO 1
OPERATING FORCE -----	12 OZ MAX	CONTACT ARRANGEMENT	BREAK DISTANCE	DO NOT SCALE PRINT
RELEASE FORCE -----	2 OZ MIN			UNLESS OTHERWISE SPECIFIED
DIFFERENTIAL TRAVEL -----	.015 MAX			DIMENSIONS ARE IN INCHES
OVERTRAVEL -----	.015 MIN			<b>TOLERANCES ARE:</b>
				ONE PLACE (.0) ±.030
				TWO PLACE (.00) ±.015
				THREE PLACE (.000) ±.005
				ANGLES ±
				WEIGHT