

MICRO SWITCH

FREEPORT ILLINOIS, U.S.A
A DIVISION OF HONEYWELL
FED. MFG. CODE 91929

ACTUATOR - SWITCH

JE - 84

M

DRAWING NUMBER

ISSUE

REVISIONS

REPLACES X85274 - JE

RELEASE NO. PR-14836

CHECK

CHECK

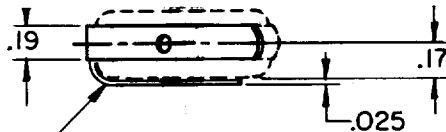
2 JUN 58

CHECK DEC

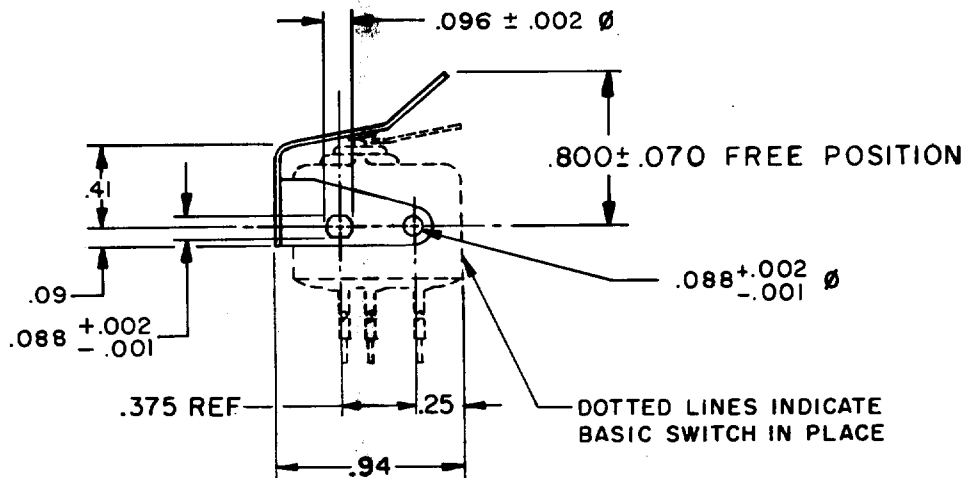
24 JUN 86

FO-52848-A

DRAWN

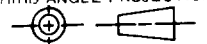


.012 THICK CORROSION RESISTANT STEEL LEAF



THIS DRAWING COVERS A PROPRIETARY ITEM AND IS THE PROPERTY OF MICRO SWITCH, A DIVISION OF HONEYWELL. THIS DRAWING IS NOT TO BE COPIED OR USED WITHOUT THE APPROVAL OF MICRO SWITCH.

THIRD ANGLE PROJECTION



CHARACTERISTICS WITH ISEI BASIC SWITCH INSTALLED

OPERATING FORCE --- 12 OZ. MAX
RELEASE FORCE --- 2 OZ. MIN
DIFFERENTIAL TRAVEL --- .025 MAX
OVERTRAVEL --- .015 MIN

ELECTRICAL DATA

CONTACT ARRANGEMENT

SCALE FULL

DO NOT SCALE PRINT

TOLERANCES
APPLY TO DESIGN UNITS. CONVERSIONS ARE ONLY FOR REFERENCE. UNLESS NOTED, TOLERANCES ARE ±

	DIM.		TOL.	
	mm	mm/in	in	mm/in
NO PLACES	X	1/.04		
ONE PLACE	X,X	0.4/.018	X,X	0.8/.03
TWO PLACES	X,X,X	0.15/.008	X,X,X	0.38/.015
THREE PLACES	X,X,X,X		X,X,X,X	0.13/.005
ANGLES				

DESIGN UNITS

SI METRIC

US CUSTOMARY

WEIGHT