

Han K 6/12 Pos. F Insert

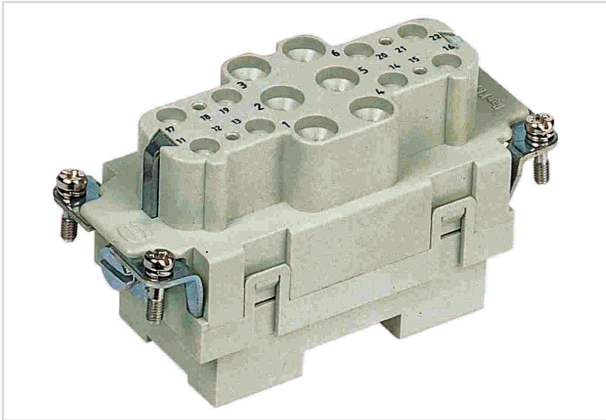


Image is for illustration purposes only. Please refer to product description.

Part number	09 38 018 2701
Specification	Han K 6/12 Pos. F Insert
HARTING eCatalogue	https://b2b.harting.com/09380182701

Identification

Category	Inserts
Series	Han-Com®
Identification	Han® K 6/12

Version

Termination method	Axial screw termination / screw termination
Gender	Female
Size	16 B
Number of contacts	6
further contacts	+ 12 additional signal contacts
PE contact	Yes

Technical characteristics

Conductor cross-section	2.5 ... 8 mm ² 0.2 ... 2.5 mm ² Signal
Wire outer diameter	≤6.1 mm
Rated current	40 A
Rated voltage	690 V
Rated impulse voltage	8 kV
Pollution degree	3
Rated current (signal)	10 A
Rated voltage conductor-earth (signal)	230 V
Rated voltage conductor-conductor (signal)	400 V



Pushing Performance

Technical characteristics

Rated impulse voltage (signal)	4 kV
Pollution degree (signal)	3
Rated current acc. to UL	40 A
Rated voltage acc. to UL	600 V
Rated current acc. to UL (signal)	10 A
Rated voltage acc. to UL (signal)	600 V
Rated current acc. to CSA	40 A
Rated voltage acc. to CSA	300 V
Rated current acc. to CSA (signal)	10 A
Rated voltage acc. to CSA (signal)	300 V
Insulation resistance	$>10^{10} \Omega$
Contact resistance	$\leq 0.5 \text{ m}\Omega$
Contact resistance, signal area	$\leq 3 \text{ m}\Omega$
Stripping length	5 ... 6 mm @ 2.5 mm ²
	5 ... 6 mm @ 4 mm ²
	8 ... 9 mm @ 6 mm ²
	7.5 mm Signal
Tightening torque	1.5 Nm @ 2.5 mm ²
	1.5 Nm @ 4 mm ²
	2 Nm @ 6 mm ²
	0.5 Nm Signal
Limiting temperature	-40 ... +125 °C
Mating cycles	≥ 500

Material properties

Material (insert)	Polycarbonate (PC)
Colour (insert)	RAL 7032 (pebble grey)
Material (contacts)	Copper alloy
Surface (contacts)	Silver plated
Material flammability class acc. to UL 94	V-0
RoHS	compliant with exemption
RoHS exemptions	6(c): Copper alloy containing up to 4 % lead by weight
ELV status	compliant with exemption
China RoHS	50
REACH Annex XVII substances	No
REACH ANNEX XIV substances	No



Pushing Performance

Material properties

REACH SVHC substances	Yes
REACH SVHC substances	Lead
ECHA SCIP number	5dbb3851-b94e-4e88-97a1-571845975242
California Proposition 65 substances	Yes
California Proposition 65 substances	Nickel Lead

Specifications and approvals

Specifications	EN 60664-1 IEC 61984
Approvals	DNV GL

Commercial data

Packaging size	1
Net weight	150 g
Country of origin	Germany
European customs tariff number	85366990
eCl@ss	27440205 Contact insert for industrial connectors