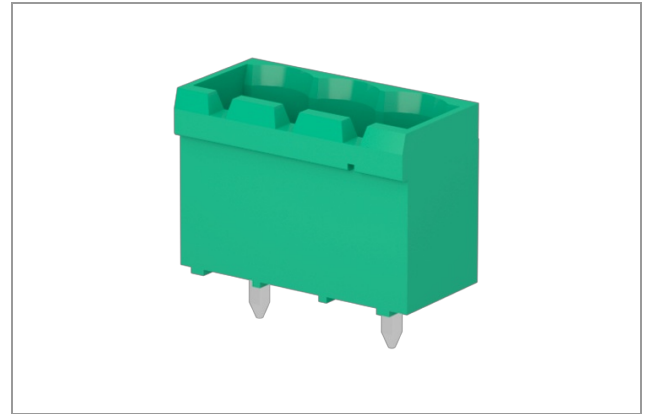


CIM040P6 - Header

Number of poles: 4, 16A, 2.5mm², 1000V, Pitch 10,16 mm,
Polarized, Connection Angle 180, Green (RAL 6032),
Soldering technology Wave, UL, VDE, IMQ, CSA



Number of poles:	4
Number of levels:	1
Sides configuration:	Polarized
Pitch:	10,16 mm
Voltage:	1000 V
Current :	16 A
Wire section:	0.05 ÷ 2.5 mm ²
Available approvals:	UL, VDE, IMQ, CSA

General Data

Features

Screw dimension	na
Operating temperature range	-40°C ÷ 105°C
Contact resistance	<15 mOhm
Insulation resistance	>1 GOhm

Certifications

CSA (n.LR 102896)

Rated voltage	600 V
Nominal current	15 A
Wire section	0

IMQ (n.EM672)

Rated voltage	1000 V		
Nominal current	12 A		
Wire section	2.5 mm ²		
Insulating category	I		
Overvoltage category/Pollution degree	III/3	III/2	II/2
Impulse voltage	8kV	8kV	8kV
Rated voltage	630V	1000V	1000V
Insulation voltage	630V	1000V	1000V

UL (n.E167473)

Rated voltage	600 V
Nominal current	15 A
Wire section	0

VDE (n.40027448 Reg.-Nr. 112754)

Rated voltage	750 V
---------------	-------

VDE (n.40027448 Reg.-Nr. 112754)

Nominal current	16 A
Wire section	2.5 mm ²
Insulating category	III

Materials

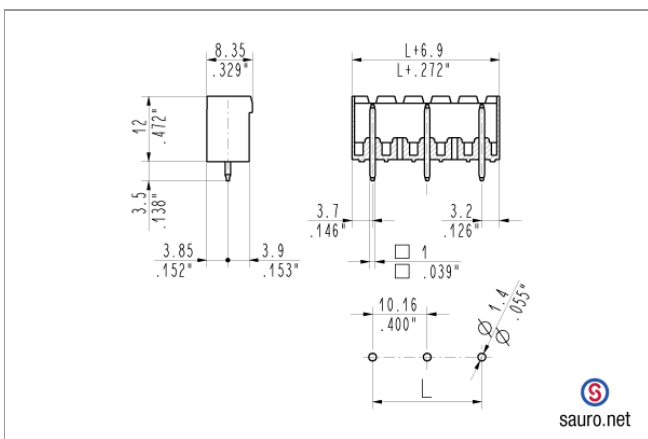
Components

Terminal contact	Nickel and tin on copper alloy
NA	NA
Insulating housing material	PA Polyamide
Insulating material group	I (CTI >= 600V)

Available colors

green	(similar to RAL 6032)
black	(similar to RAL 9005)
light grey	(similar to RAL 7035)
dark gray	(similar to RAL 7040)
orange	(similar to RAL 2003)
blue	(similar to RAL 5012)
red	(similar to RAL 3017)
another colors	(on demand)

Technical drawing



Derating curve

