

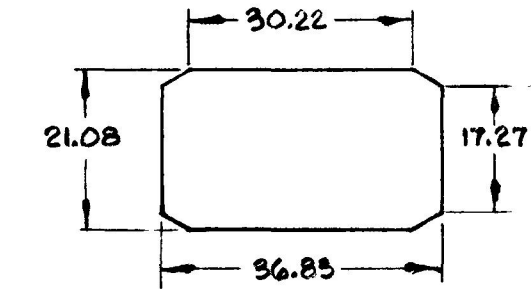
57300-11

MM. IN.
 0.25 .010
 2.28 .090
 12.70 .500
 13.71 .540
 17.01 .670
 17.27 .680
 21.08 .830
 27.94 1.100
 30.22 1.190
 31.49 1.240
 36.83 1.450
 39.87 1.570
 22.86 .900

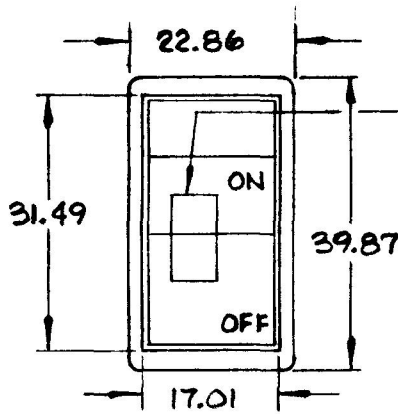
COLE-HERSEE CO.

NPM 10-2-73

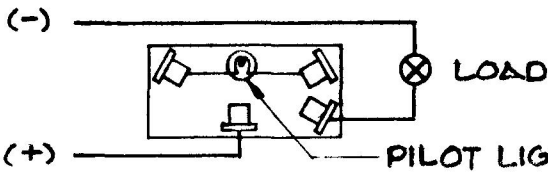
EX-16801



MOUNTING HOLE DETAIL



RED LENS - ILLUMINATED IN "ON" POS.



CIRCUIT DIAGRAM

METRIC

ROCKER - WHITE, SMOOTH

BEZEL - STEEL, BLACK FINISH

INSULATOR - MOLDED PHENOLIC

MALE BLADE TERMINAL - BRASS SAE J858 TYPE 1B, 4 PLACES

"ON"

"OFF"

2.28

27.94 REF.

BAT

LOAD

12.70
13.71

PILOT LIGHT

PILOT LIGHT

NOTES:

1. SILVER CONTACT RIVETS AND SILVER CONTACT PAD.
2. 25 AMPS @ 12 VDC LAMP LOAD.
3. HEAVY DUTY

DO NOT SCALE

LET	WAS	DATE	BY	LET	WAS	DATE	BY	MATERIAL	DRAWN	CHECKED	APPR'D	SCALE	DATE DRAWN
								— II —	S.B.	1/12		1:1	9-26-73
								FINISH	COLE-HERSEE COMPANY BOSTON, MASS. 02127, U.S.A.				DATE BLUEPRINT
							— II —						9-26-73
				D	ALSO IND. CIRCUIT	7-2-82	WJF	TOLERANCES	ROCKER SWITCH				57300-11
				C	RE DRAWN METRIC	6-18-76	WJF	FRACTIONAL ±					
								DECIMAL ±0.25					