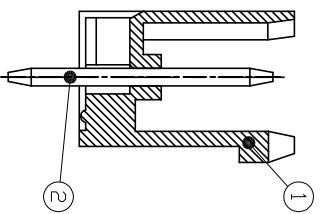
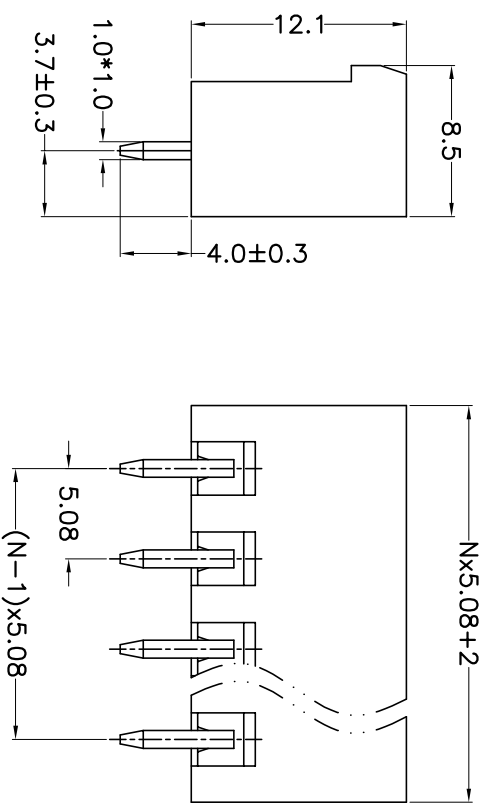
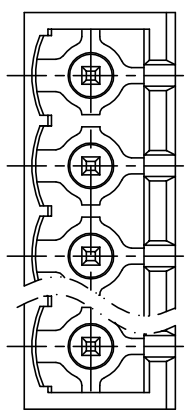
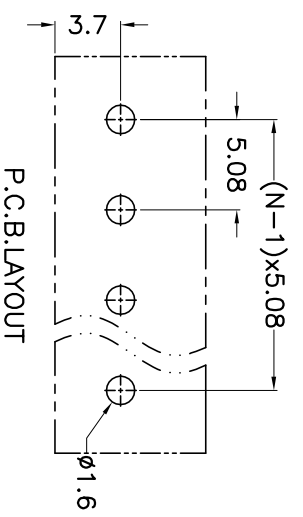


REV.	DESCRIPTION	DATE	DRAFTER	APPROVER
A1	DWG.REL	2020.6.02	ZHANG	JIN



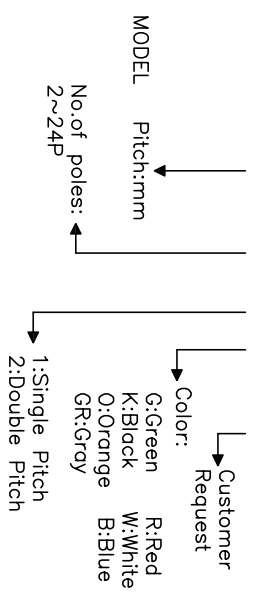
- Material
 @Housing : PA66, UL94V-0
 @Pin header : Copper alloy, Tin plated
- Electrical
 UL IEC
 Rated voltage : 300V 320V
 Rated current : 15A 20A
 Contact resistance : 20mΩ(Max)
 Insulation resistance: 500MΩ/DC500V
 Withstanding Voltage : AC2000V/1min
- Mechanical
 Operating temperature: -40°C ~ +105°C
 Soldering temperature: 250°C ± 5/5sec
- RoHS compliance



Pitch range	Nominal dimension range	0.1/10	±2°
>0	>10	□	□
>6	>30	□	□
~6	~30	□	□
~10	~60	□	□
~24	~100	□	□
±0.15	±0.30	□	□
	±0.50	□	□
	±0.70	□	□
	±1.00	□	□
	±1.30	□	□

DRAWING TYPE	CUSTOMER DRAWING	PROJECTION	UNIT	TITLE
SCALE	1:1	1 OF 1	mm	KF2EDGCV-X-5.08-XXP-1X
DRAWING NO.	W100000622	SHEET	A4	SERIES KF2EDGCV-X

HOW TO ORDER
 KF2EDGCV-X-5.08-XXP-1 X-XXXXX



DF 慈溪市凯峰电子有限公司
 CIXI KAIFENG ELECTRONICS CO.,LTD