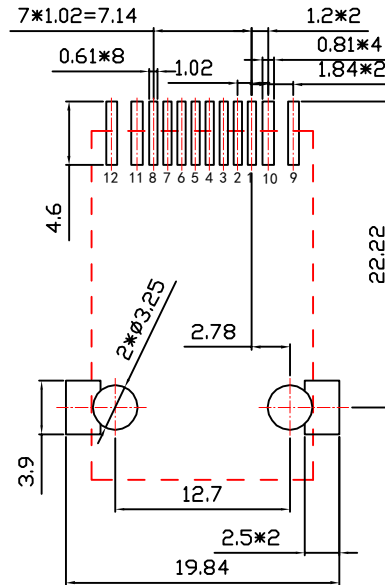
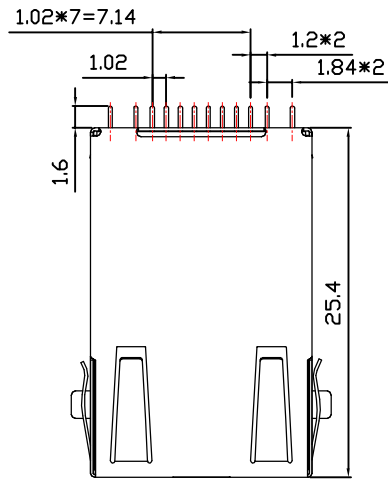
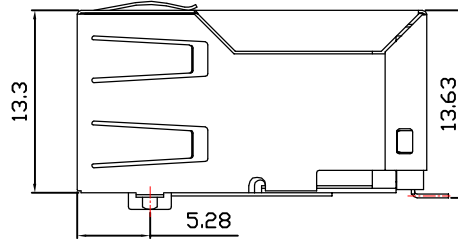
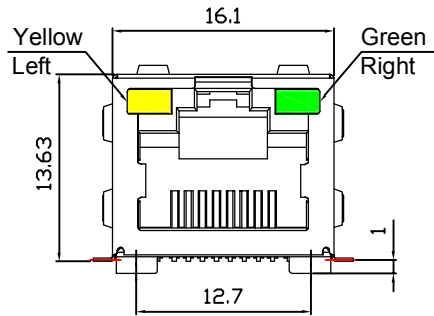


RoHS CONFORM

REV.	ECN / DESCRIPTION	BY	DATE



PCB LAYOUT

Material:

Housing :LCP+30%GF,UL94V-0,Black.

Plastic bracket :LCP+30%GF,UL94V-0,Black.

Shell: C2680R-H,T=0.20mm,Nickel plated on all area.

Contact terminal:Phosphor bronze C5210R-EH,T=0.35mm,
Gold plated 6u" on mating area.

Mechanical:

Durability :750 cycles Min.

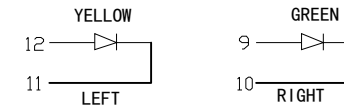
Mating force :30N Max.

Operating temperature:-40°C~+85°C.

Storage temperature:-40°C~+85°C.

SpecificationLED

Standard LED Color	LED Wavelength	Foward(V MAX)	Typical(V TYP)	Luminous Intensity
Green	560-580nm	2.5v	2.1-2.2v	9-25 MCD
Yellow	580-610nm	2.5v	2.1-2.2v	9-30 MCD



NINGBO KLS ELECTRONIC CO.,LTD

TITLE:
TAB-UP 1X1 100BASE 贴片
PART NO.:
L-KLS12-TL232-1X1-Y/G-03
DWG NO.:

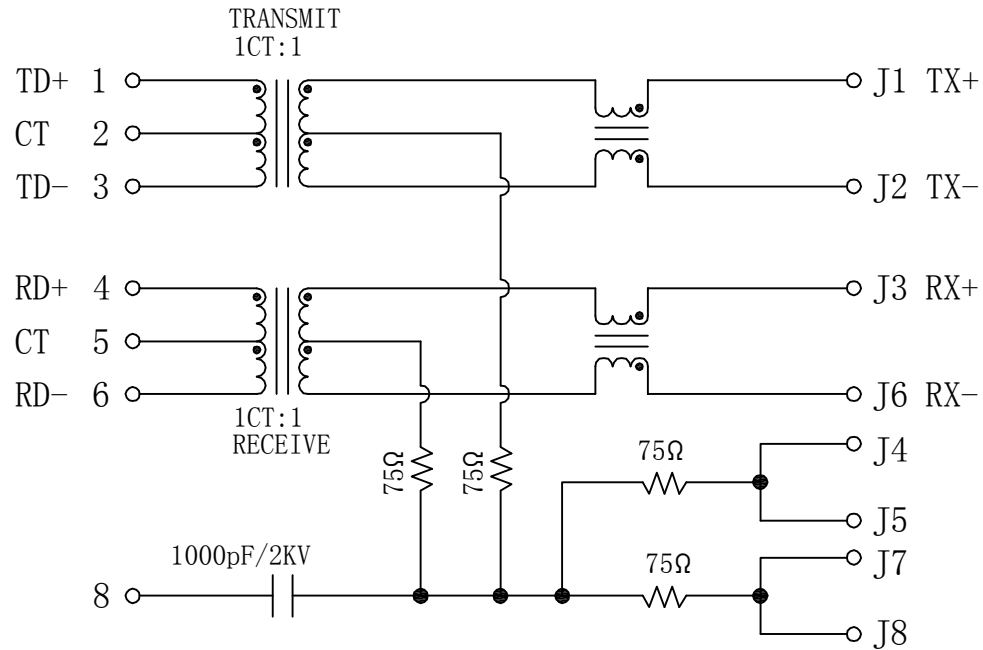
SIZE
A4
UNITS
MM[INCH]
GENERAL TOLERANCES
UNLESS SPECIFIED
APPROVED BY:
JP.Gong
CHECKED BY:
Xu.TW
DESIGND BY:
Qu.mq
SHEET
1/3

x±0.25
.x±0.20
.xx±0.10
.xxx±0.05
x°±3.0°
.x°±2.0°
.xx°±1.5°
.xxx°±1.0°

APPROVED BY:
JP.Gong
CHECKED BY:
Xu.TW
DESIGND BY:
Qu.mq

RoHS CONFORM

REV.	ECN / DESCRIPTION	BY	DATE



Electrical:

1. Insulation resistance: 500 megohms MIN @500VDC.
2. Contact resistance: 20 milliohms Max. initial.
50 milliohms Max. after durability test.
3. Turn Ratio: 1~3: J1~J2 = 1CT:1CT(±2%).
4~6: J3~J6 = 1CT:1CT(±2%).
4. OCL: 350uH Min. at 100KHz 100mV 8mA DC.
5. Insertion Loss: -1.0 dB Max 1MHz to 100MHz.
6. Return loss: -16dB Min From 1MHz to 30MHz;
-14dB Min From 30MHz to 60MHz;
-10dB Min From 60MHz to 80MHz.
7. Cross talk: -40dB Min From 1MHz-30MHz;
-35dB Min From 30MHz-60MHz;
-30dB Min From 60MHz-100MHz;
8. CMR: -35dB Min From 1MHz-100MHz;
9. Hi-Pot: 1500V AC 6S 1mA

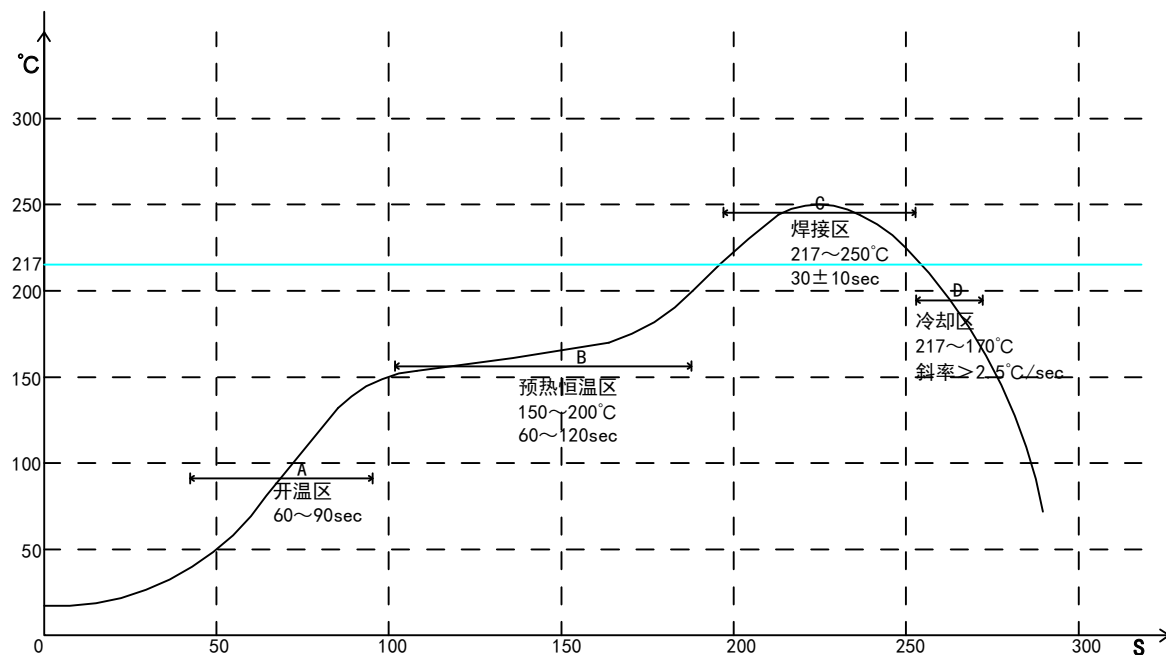
NINGBO KLS ELECTRONIC CO.,LTD

TITLE: TAB-UP 1X1 100BASE 贴片	SIZE A4	UNITS MM[INCH]	GENERAL TOLERANCES UNLESS SPECIFIED		APPROVED BY: JP.Gong	
	PART NO.: L-KLS12-TL232-1X1-Y/G-03	SACLE 1:1	REV A0	x±0.25 .x±0.20	x°±3.0° .x°±2.0°	CHECKED BY: Xu.TW
	DWG NO.:	SHEET 2/3		.xx±0.10 .xxx±0.05	.xx°±1.5° .xxx°±1.0°	DESIGND BY: Qu.mq

RoHS CONFORM

REV.	ECN / DESCRIPTION	BY	DATE

PROFILE OF REFLOW SOLDERING



- A. Temperature range of open
- B. Preheat temperature zone
- C. The welding zone
- D. The cooling zone
- Tip temperature: $265 \pm 5^\circ\text{C}$.
- Tip temperature time: $30 \pm 10\text{Sec}$.
- Tip melting point of Sn96.5/Ag3/Cu0.5.

NINGBO KLS ELECTRONIC CO.,LTD	TITLE: TAB-UP 1X1 100BASE 贴片	SIZE A4	UNITS MM[INCH]	GENERAL TOLERANCES UNLESS SPECIFIED		APPROVED BY: JP.Gong
	PART NO.: L-KLS12-TL232-1X1-Y/G-03	SACLE 1:1	REV A0	$x \pm 0.25$	$x^\circ \pm 3.0^\circ$	CHECKED BY: Xu.TW
	DWG NO.:	SHEET 3/3		$.xx \pm 0.10$	$.xx^\circ \pm 1.5^\circ$	DESIGND BY: Qu.mq
				$.xxx \pm 0.05$	$.xxx^\circ \pm 1.0^\circ$	