

General Specifications

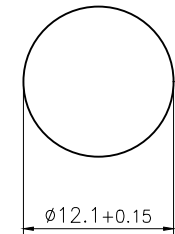
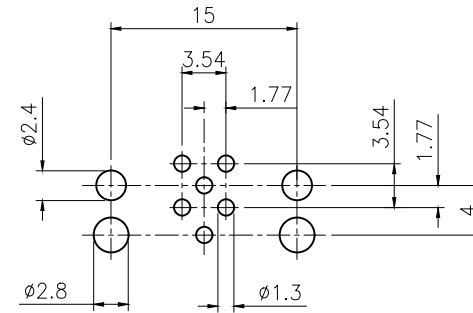
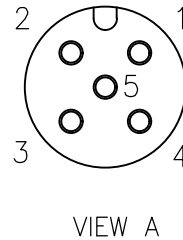
Connector locking system: Screw
 Termination: Dip solder
 Type: Right angled
 Temperature range: $-25^{\circ}\text{C} \sim +85^{\circ}\text{C}$
 Mating cycles: > 500
 Coding: A
 Degree of protection: IP67 when mated

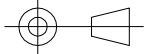
Contact resistance: $\leq 5 \text{ m}\Omega$
 Insulation resistance: $\geq 100 \text{ M}\Omega$

Materials:

Contact: CuSn
 Contact plating: Gold plated
 Contact insert: PA66+GF UL94 black
 Shell A: CuZn nickel plated
 Shell B: CuZn nickel plated
 Sealing: NBR black
 Adhesive: Epoxy

All materials are RoHS compliant



GENERAL TOLERANCE (UNLESS SPECIFIED)	DWN	NINGBO KLS ELECTRONIC CO.,LTD
	$\leq 10 \pm 0.1$	
$< 10 \sim \leq 20 \pm 0.2$	APVD	
$< 20 \sim \leq 50 \pm 0.5$	UNIT	REV
Angle $\pm 1^{\circ}$	MM	A
 THIRD ANGLE	SIZE	SHEET
	A4	1 OF 1
PART NO		L-KLS15-M12A-R205S
DRAWING NO		