



# C10AM-G

C10AM-G is an LTE CAT 1/2G compatible Smart Cellular Modules based on 3GPP release 9, that comes with an integrated eSIM. It also comes with an integrated GNSS and fall back option to 2G (EGPRS) network when required. The integrated eSIM coupled with Cavli Hubble Global Connectivity ensures the module can be deployed across the globe, making it an ideal solution for logistics, automotive, vehicle tracking systems and more.

## Reimagining Cellular IoT Solutions

### THE CAVLI ADVANTAGE

Integrated eSIM & global connectivity through Cavli Hubble™  
Intelligent/Automatic local eSIM provisioning  
Advanced firmware installation/update over-the-air  
PAYG Global Data Subscription Model

### FEATURES

Compatibility with existing LTE networks  
Optimized for higher bandwidth including voice  
Paired for devices in mobility  
Perfect for localized applications such as -  
Security and Surveillance, Point of Sales, Health Monitoring-  
Fleet Management and Asset Tracking

### TECHNICAL SPECIFICATIONS

CAT-1: B1/B3/B5/B8/B39/B40/B41  
EGPRS: 900/1800  
LTE: 3GPP E-UTRA Release 9 CAT 1  
CPU: ARM Cortex-R5 with 624MHz clock with 32K I-Cache,32K D  
Cache and 64KB TCM 32KB ROM and 64KB on-chip SRAM for application usage  
Location: GNSS - GPS, GLONASS, Beidou, Galileo

### DATA-CONNECTIVITY

LTE CAT 1: 5Mbps (UL), 10Mbps (DL)  
GPRS: 85.6Kbps (UL), 85.6Kbps (DL)  
EDGE: 236.8Kbps (UL), 236.8Kbps (DL)

### PACKAGING

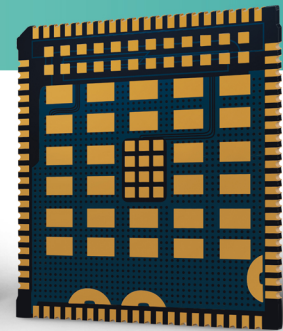
Dimension: 32 x 29 x 2.4 mm, LCC Package

### TEMPERATURE RANGE

Normal working temperature: -20°C to +70°C  
Limit working temperature: -40°C to +85°C  
Storage temperature: -45°C to +90°C

### INTERFACES

1.8V/3V SIM Interface  
Operating Voltage: 3.4V to 4.2V; Typ 3.7V  
1xUSB2.0, 2xUART, 1xUSIM, 3xGPIO, 1xPCM, 1xI2C, 1xSDIO, 2xADC, 2xANT



APPLICABLE REGIONS  
Asia-Pacific, EMEA

## TECHNICAL HIGHLIGHTS

PARAMETERS	LTE-CAT 1
BANDWIDTH	20 MHz
PEAK DATA RATE	<10 Mbps
UPLINK SPEED	5 Mbps
DOWNLINK SPEED	10 Mbps
LATENCY	10ms
PENETRATION	Excellent
VOICE	VoLTE

## APPLICATIONS



Automotive & Logistics



Smart City



Energy & Utilities



Safety & Security



Manufacturing



Agriculture



Health Care/  
E- Health



Retail



Smart Home

### Cavli Hubble™

Cavli Hubble™ is our proprietary Connectivity as a Service (Caas) cloud platform for global cellular data subscription management, module & modem management, enabling businesses and industries to build and deploy easily scalable global wireless IoT solutions.

