

Appearance & Shape: To be free from any defect such as flow, burrs, unevenness etc, As per IEC standards.

Effective Parameters irrespective of material grade (per piece)

- Effective Length (L_e): 20.7 mm
- Effective Area (A_e): 13.8mm²
- Effective Area (A_{Min}): 13.8mm²
- Effective Volume (V_e): 286mm³

Approximate weight : 1.1g/pc



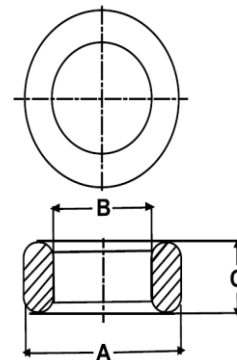
T0906 OL (Un- Coated)

Test Conditions: 10kHz/150mV/CFR COIL,N=01/Lo=Zero/25°C

Material Grade	Initial Permeability (μ_{iac})	AL Value (nH)	Ordering code
CF196	2000 \pm 20%	1700+30%/-20%	CF196T0906
CF139	2100 \pm 20%	1750+30%/-20%	CF139T0906
CF130	3000 \pm 20%	2500+30%/-20%	CF130T0906
CF195A	5000 \pm 20%	4200+30%/-20%	CF195AT0906
CF265	5000 \pm 20%	4200+30%/-20%	CF265T0906
CF190	6000 \pm 20%	5000+30%/-20%	CF190T0906
CF197	7000 \pm 20%	5900+30%/-20%	CF197T0906
CF199	9000 \pm 20%	7500 \pm 30%	CF199T0906

Dimensions(Un-coated Core)

Dimension	Nominal (in mm)	Maximum (in mm)	Minimum (in mm)
A	9.53	9.83	9.23
B	4.75	4.95	4.55
C	6.0	6.2	5.8



For general terms and conditions please visit: http://www.cosmoferrites.com/Downloads/Downloads/bcb70e7c-ae33-40ec-a881-0d5120db57b6_GTC.pdf