

Appearance & Shape: To be free from any defect such as flow, burrs, unevenness etc, As per IEC standards.
Effective Parameters irrespective of material grade (per piece)

- Effective Length (L_e): 255.3mm
 - Effective Area (A_e): 445.3mm²
 - Effective Area (A_{Min}): 445.3mm²
 - Effective Volume (V_e): 11370mm³
- Approximate weight : 575g/pc**



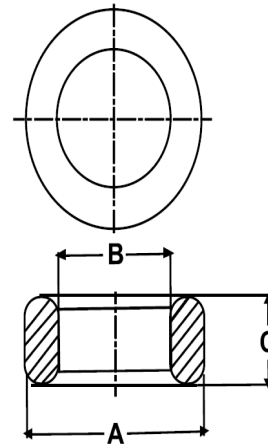
T10225 OL (Un-coated)

Test Conditions: 10kHz/150mV/CFR COIL,N=01/Lo=Zero/25°C

Material Grade	Approx. (μ_{iac})	AL Value (nH)	Ordering code
CF196	2000 ±20%	4500 +30%/-20%	CF196T10225
CF139	2100 ±20%	4700 +30%/-20%	CF139T10225
CF130	3000 ±20%	6700 +30%/-20%	CF130T10225
CF265	5000 ±20%	11200 +30%/-20%	CF265T10225
CF195A	5000 ±20%	11200 +30%/-20%	CF195AT10225
CF190	6000 ±20%	13400 +30%/-20%	CF190T10225
CF197	7000 ±20%	15300 +30%/-20%	CF197T10225

Dimensions(Un-coated Core)

Dimension	Nominal (in mm)	Maximum (in mm)	Minimum (in mm)
A	102.0	104.0	100.0
B	65.8	67.1	64.5
C	25.0	25.7	24.3



For general terms and conditions please visit: http://www.cosmoferrites.com/Downloads/Downloads/bcb70e7c-ae33-40ec-a881-0d5120db57b6_GTC.pdf