

Appearance & Shape: To be free from any defect such as flow, burrs, unevenness etc, As per IEC standards.

Effective Parameters irrespective of material grade (per piece)

- Effective Length (L_e): 255.3mm
- Effective Area (A_e): 391.9mm²
- Effective Area (A_{Min}): 391.9mm²
- Effective Volume (V_e): 10005mm³

Approximate weight : 450g/pc



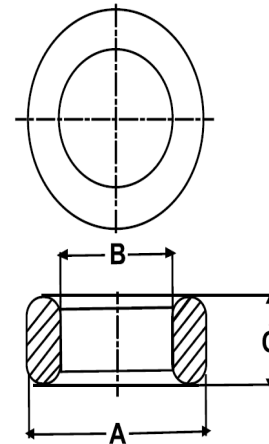
T10222 OL (Un-coated)

Test Conditions: 10kHz/150mV/CFR COIL,N=01/Lo=Zero/25°C

Material Grade	Approx. (μ_{iac})	AL Value (nH)	Ordering code
CF196	2000 ±20%	3850 +30%/-20%	CF196T10222
CF139	2100 ±20%	4000 +30%/-20%	CF139T10222
CF130	3000 ±20%	5800 +30%/-20%	CF130T10222
CF265	5000 ±20%	9600 +30%/-20%	CF265T10222
CF195A	5000 ±20%	9600 +30%/-20%	CF195AT10222
CF190	6000 ±20%	11500 +30%/-20%	CF190T10222
CF197	7000 ±20%	13500 +30%/-20%	CF197T10222

Dimensions(Un-coated Core)

Dimension	Nominal (in mm)	Maximum (in mm)	Minimum (in mm)
A	102.0	104.0	100.0
B	65.8	67.1	64.5
C	22.0	22.5	21.5



For general terms and conditions please visit: http://www.cosmoferrites.com/Downloads/Downloads/bcb70e7c-ae33-40ec-a881-0d5120db57b6_GTC.pdf