

Appearance & Shape: To be free from any defect such as flow, burrs, unevenness etc, As per IEC standards.
Effective Parameters irrespective of material grade (per piece)

- Effective Length (L_e): 255.0mm
 - Effective Area (A_e): 262.0mm²
 - Effective Area (A_{Min}): 262.0mm²
 - Effective Volume (V_e): 66810mm³
- Approximate weight : 340g/pc**



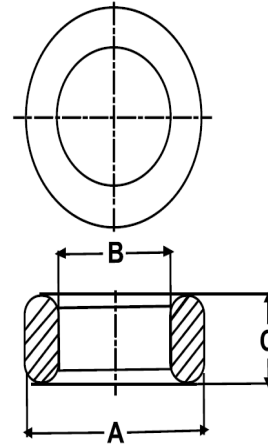
T10215OL (Un-coated)

Test Conditions: 10kHz/150mV/CFR COIL,N=01/Lo=Zero/25°C

Material Grade	Approx. (μ_{iac})	AL Value (nH)	Ordering code
CF196	2000 \pm 20%	2550 +30%/-20%	CF196T10215
CF139	2100 \pm 20%	2700 +30%/-20%	CF139T10215
CF130	3000 \pm 20%	3850 +30%/-20%	CF130T10215
CF265	5000 \pm 20%	6400 +30%/-20%	CF265T10215
CF195A	5000 \pm 20%	6400 +30%/-20%	CF195AT10215
CF190	6000 \pm 20%	7700 +30%/-20%	CF190T10215
CF197	7000 \pm 20%	9000 +30%/-20%	CF197T10215
CF199	9000 \pm 20%	10300 \pm 30%	CF199T10215

Dimensions(Un-coated Core)

Dimension	Nominal (in mm)	Maximum (in mm)	Minimum (in mm)
A	102.0	104.0	100.0
B	65.8	67.1	64.5
C	15.0	15.5	14.5



For general terms and conditions please visit: http://www.cosmoferrites.com/Downloads/Downloads/bcb70e7c-ae33-40ec-a881-0d5120db57b6_GTC.pdf