

Appearance & Shape: To be free from any defect such as flow, burrs, unevenness etc, As per IEC standards.
Effective Parameters irrespective of material grade (per piece)

- Effective Length (L_e): 213.8mm
 - Effective Area (A_e): 327.8mm²
 - Effective Area (A_{Min}): 327.8mm²
 - Effective Volume (V_e): 70030mm³
- Approximate weight : 340g/pc**



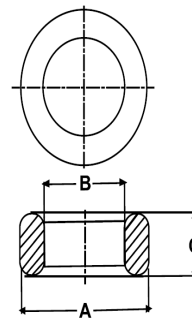
T8720 OL (Un-coated)

Test Conditions : 10kHz/150mV/CFR COIL,N=01/Lo=Zero/25deg.C

Material Grade	Initial Permeability (μ_{iac})	AL Value (nH)	Ordering code
CF196	2000 \pm 20%	3850 +30%/-20%	CF196T8720
CF139	2100 \pm 20%	4000 +30%/-20%	CF139T8720
CF130	3000 \pm 20%	5800 +30%/-20%	CF130T8720
CF195A	5000 \pm 20%	9600 +30%/-20%	CF195AT8720
CF265	5000 \pm 20%	9600 +30%/-20%	CF265T8720
CF190	6000 \pm 20%	11500 +30%/-20%	CF190T8720
CF197	7000 \pm 20%	13400 +30%/-20%	CF197T8720
CF199	9000 \pm 20%	16400 \pm 30%	CF199T8720

Dimensions : (Un-coated Cores)

Dimension	Nominal (in mm)	Maximum (in mm)	Minimum (in mm)
A	87.4	88.75	86.05
B	54.0	55.0	53.0
C	20.0	20.45	19.55



For general terms and conditions please visit: http://www.cosmoferrites.com/Downloads/Downloads/bcb70e7c-ae33-40ec-a881-0d5120db57b6_GTC.pdf