

Appearance & Shape: To be free from any defect such as flow, burrs, unevenness etc, As per IEC standards.
Effective Parameters irrespective of material grade (per piece)

- Effective Length (L_e): 217.0mm
 - Effective Area (A_e): 194.0mm²
 - Effective Area (A_{Min}): 194.0mm²
 - Effective Volume (V_e): 42133mm³
- Approximate weight : 214g/pc**



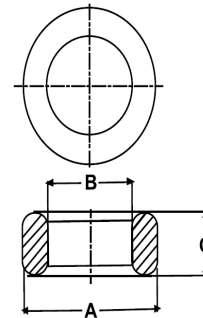
T8756 OL (Un-coated)

Test Conditions : 10kHz/150mV/CFR COIL,N=01/Lo=Zero/25deg.C

Material Grade	Initial Permeability (μ_{iac})	AL Value (nH)	Ordering code
CF196	2000 \pm 20%	2200 +30%/-20%	CF196T8756
CF139	2100 \pm 20%	2350 +30%/-20%	CF139T8756
CF130	3000 \pm 20%	3350 +30%/-20%	CF130T8756
CF195A	5000 \pm 20%	5600 +30%/-20%	CF195AT8756
CF265	5000 \pm 20%	5600 +30%/-20%	CF265T8756
CF190	6000 \pm 20%	6700 +30%/-20%	CF190T8756
CF197	7000 \pm 20%	7800 +30%/-20%	CF197T8756

Dimensions : (Un-coated Cores)

Dimension	Nominal (in mm)	Maximum (in mm)	Minimum (in mm)
A	87.0	88.2	85.8
B	56.0	57.0	55.0
C	12.7	13.2	12.2



For general terms and conditions please visit: http://www.cosmoferrites.com/Downloads/Downloads/bcb70e7c-ae33-40ec-a881-0d5120db57b6_GTC.pdf