

Appearance & Shape: To be free from any defect such as flow, burrs, unevenness etc, As per IEC standards.
Effective Parameters irrespective of material grade (per piece)

- Effective Length (L_e): 152.1 mm
 - Effective Area (A_e): 184.2mm²
 - Effective Area (A_{Min}): 184.2mm²
 - Effective Volume (V_e): 28016mm³
- Approximate weight : 145g/pc**



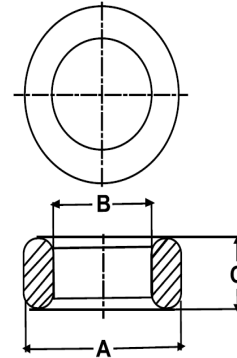
T6315OL (Un- Coated)

Test Conditions: 10kHz/150mV/CFR COIL,N=01/Lo=Zero/25°C

Material Grade	Initial Permeability (μ_{iac})	AL Value (nH)	Ordering code
CF196	2000 ±20%	3000+30%/-20%	CF196T6315
CF139	2100 ±20%	3200+30%/-20%	CF139T6315
CF130	3000 ±20%	4500+30%/-20%	CF130T6315
CF195A	5000 ±20%	7600+30%/-20%	CF195AT6315
CF265	5000 ±20%	7600+30%/-20%	CF265T6315
CF190	6000 ±20%	9100+30%/-20%	CF190T6315
CF197	7000 ±20%	10600+30%/-20%	CF197T6315
CF199	9000 ±20%	13700 ±30%	CF199T6315

Dimensions(Un-coated Core)

Dimension	Nominal (in mm)	Maximum (in mm)	Minimum (in mm)
A	63.0	64.3	61.7
B	38.0	38.8	37.2
C	15.05	15.45	14.65



For general terms and conditions please visit: http://www.cosmoferrites.com/Downloads/Downloads/bcb70e7c-ae33-40ec-a881-0d5120db57b6_GTC.pdf