

**Appearance & Shape:** To be free from any defect such as flow, burrs, unevenness etc, As per IEC standards.

**Effective Parameters irrespective of material grade (per piece)**

- Effective Length ( $L_e$ ): 128.7 mm
- Effective Area ( $A_e$ ): 197.5mm<sup>2</sup>
- Effective Area ( $A_{Min}$ ): 197.5mm<sup>2</sup>
- Effective Volume ( $V_e$ ): 25430mm<sup>3</sup>

**Approximate weight : 120g/pc**



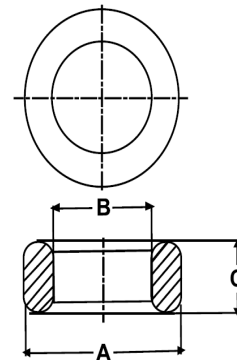
## T5025 OL (Un- Coated)

**Test Conditions: 10kHz/150mV/CFR COIL,N=01/Lo=Zero/25°C**

Material Grade	Initial Permeability ( $\mu_{iac}$ )	AL Value (nH)	Ordering code
CF196	2000 ±20%	3850+30%/-20%	CF196T5025
CF139	2100 ±20%	4050+30%/-20%	CF139T5025
CF130	3000 ±20%	5800+30%/-20%	CF130T5025
CF195A	5000 ±20%	9600+30%/-20%	CF195AT5025
CF265	5000 ±20%	9600+30%/-20%	CF265T5025
CF190	6000 ±20%	11500+30%/-20%	CF190T5025
CF197	7000 ±20%	13500+30%/-20%	CF197T5025

## Dimensions(Un-coated Core)

Dimension	Nominal (in mm)	Maximum (in mm)	Minimum (in mm)
A	50.0	51.0	49.0
B	34.0	34.8	33.2
C	25.0	25.5	24.5



For general terms and conditions please visit: [http://www.cosmoferrites.com/Downloads/Downloads/bcb70e7c-ae33-40ec-a881-0d5120db57b6\\_GTC.pdf](http://www.cosmoferrites.com/Downloads/Downloads/bcb70e7c-ae33-40ec-a881-0d5120db57b6_GTC.pdf)