

**Appearance & Shape:** To be free from any defect such as flow, burrs, unevenness etc, As per IEC standards.  
**Effective Parameters irrespective of material grade (per piece)**

- Effective Length ( $L_e$ ): 110.5 mm
  - Effective Area ( $A_e$ ): 133.5mm<sup>2</sup>
  - Effective Area ( $A_{Min}$ ): 133.5mm<sup>2</sup>
  - Effective Volume ( $V_e$ ): 11934mm<sup>3</sup>
- Approximate weight : 58.7g/pc**



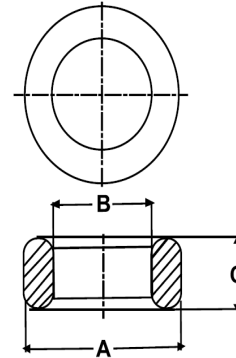
## T4516 OL (Un- Coated)

Test Conditions: 10kHz/150mV/CFR COIL,N=01/Lo=Zero/25°C

Material Grade	Initial Permeability ( $\mu_{iac}$ )	AL Value (nH)	Ordering code
CF196	2000 ±20%	3000+30%/-20%	CF196T4516
CF139	2100 ±20%	3200+30%/-20%	CF139T4516
CF130	3000 ±20%	4500+30%/-20%	CF130T4516
CF195A	5000 ±20%	7600+30%/-20%	CF195AT4516
CF265	5000 ±20%	7600+30%/-20%	CF265T4516
CF190	6000 ±20%	9100+30%/-20%	CF190T4516
CF197	7000 ±20%	10600+30%/-20%	CF197T4516
CF199	9000 ±20%	13600 ±30%	CF199T4516

## Dimensions(Un-coated Core)

Dimension	Nominal (in mm)	Maximum (in mm)	Minimum (in mm)
A	45.0	46.35	43.65
B	28.0	28.8	27.2
C	16.0	16.4	15.6



For general terms and conditions please visit: [http://www.cosmoferrites.com/Downloads/Downloads/bcb70e7c-ae33-40ec-a881-0d5120db57b6\\_GTC.pdf](http://www.cosmoferrites.com/Downloads/Downloads/bcb70e7c-ae33-40ec-a881-0d5120db57b6_GTC.pdf)