

Appearance & Shape: To be free from any defect such as flow, burrs, unevenness etc, As per IEC standards.

Effective Parameters irrespective of material grade (per piece)

- Effective Length (L_e): 96.4 mm
- Effective Area (A_e): 123.8mm²
- Effective Area (A_{Min}): 123.8mm²
- Effective Volume (V_e): 11934mm³

Approximate weight : 58.7g/pc



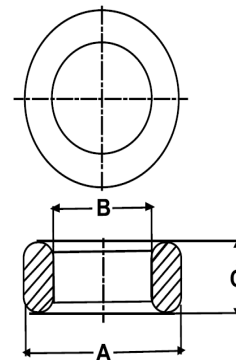
T4016 OL (Un- Coated)

Test Conditions: 10kHz/150mV/CFR COIL,N=01/Lo=Zero/25°C

| Material Grade | Initial Permeability (μ_{iac}) | AL Value (nH) | Ordering code |
|----------------|--------------------------------------|----------------|---------------|
| CF196 | 2000 ±20% | 3200+30%/-20% | CF196T4016 |
| CF139 | 2100 ±20% | 3400+30%/-20% | CF139T4016 |
| CF130 | 3000 ±20% | 4800+30%/-20% | CF130T4016 |
| CF195A | 5000 ±20% | 8000+30%/-20% | CF195AT4016 |
| CF265 | 5000 ±20% | 8000+30%/-20% | CF265T4016 |
| CF190 | 6000 ±20% | 9700+30%/-20% | CF190T4016 |
| CF197 | 7000 ±20% | 11300+30%/-20% | CF197T4016 |
| CF199 | 9000 ±20% | 13700 ±30% | CF199T4016 |

Dimensions(Un-coated Core)

| Dimension | Nominal (in mm) | Maximum (in mm) | Minimum (in mm) |
|-----------|-----------------|-----------------|-----------------|
| A | 39.9 | 40.5 | 39.3 |
| B | 24.1 | 24.6 | 23.6 |
| C | 16.0 | 16.3 | 15.7 |



For general terms and conditions please visit: http://www.cosmoferrites.com/Downloads/Downloads/bcb70e7c-ae33-40ec-a881-0d5120db57b6_GTC.pdf

Regd. Office & Works: Jabli, Distt. Solan, Himachal Pradesh – 173 209 (India)

Tel: +91 1792 277231/32/36, Fax: +91 1792 277234

E-mail: sales@cosmoferrites.com