

Appearance & Shape: To be free from any defect such as flow, burrs, unevenness etc, As per IEC standards.

Effective Parameters irrespective of material grade (per piece)

- Effective Length (L_e): 97.1 mm
- Effective Area (A_e): 97.0mm²
- Effective Area (A_{Min}): 97.0mm²
- Effective Volume (V_e): 9419mm³

Approximate weight : 49g/pc



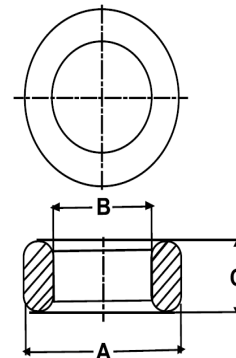
T3816 OL (Un- Coated)

Test Conditions: 10kHz/150mV/CFR COIL,N=01/Lo=Zero/25°C

Material Grade	Initial Permeability (μ_{iac})	AL Value (nH)	Ordering code
CF196	2000 ±20%	2500+30%/-20%	CF196T3816
CF139	2100 ±20%	2600+30%/-20%	CF139T3816
CF130	3000 ±20%	3750+30%/-20%	CF130T3816
CF195A	5000 ±20%	6250+30%/-20%	CF195AT3816
CF265	5000 ±20%	6250+30%/-20%	CF265T3816
CF190	6000 ±20%	7500+30%/-20%	CF190T3816
CF197	7000 ±20%	8750+30%/-20%	CF197T3816

Dimensions(Un-coated Core)

Dimension	Nominal (in mm)	Maximum (in mm)	Minimum (in mm)
A	38.1	38.8	37.4
B	25.4	25.9	24.9
C	15.8	16.2	15.4



For general terms and conditions please visit: http://www.cosmoferrites.com/Downloads/Downloads/bcb70e7c-ae33-40ec-a881-0d5120db57b6_GTC.pdf

Regd. Office & Works: Jabli, Distt. Solan, Himachal Pradesh – 173 209 (India)

Tel: +91 1792 277231/32/36, Fax: +91 1792 277234

E-mail: sales@cosmoferrites.com