

Appearance & Shape: To be free from any defect such as flow, burrs, unevenness etc, As per IEC standards.

Effective Parameters irrespective of material grade (per piece)

- Effective Length (L_e): 89.6 mm
- Effective Area (A_e): 95.9mm²
- Effective Area (A_{Min}): 95.9mm²
- Effective Volume (V_e): 8593mm³

Approximate weight : 40g/pc



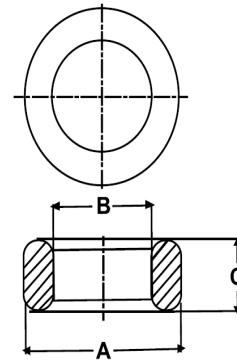
T3618 OL (Un- Coated)

Test Conditions: 10kHz/150mV/CFR COIL,N=01/Lo=Zero/25°C

Material Grade	Initial Permeability (μ_{iac})	AL Value (nH)	Ordering code
CF196	2000 \pm 20%	2700+30%/-20%	CF196T3618
CF139	2100 \pm 20%	2800+30%/-20%	CF139T3618
CF130	3000 \pm 20%	4000+30%/-20%	CF130T3618
CF195A	5000 \pm 20%	6700+30%/-20%	CF195AT3618
CF265	5000 \pm 20%	6700+30%/-20%	CF265T3618
CF190	6000 \pm 20%	8000+30%/-20%	CF190T3618
CF197	7000 \pm 20%	9400+30%/-20%	CF197T3618
CF199	9000 \pm 20%	12100 \pm 30%	CF199T3618

Dimensions(Un-coated Core)

Dimension	Nominal (in mm)	Maximum (in mm)	Minimum (in mm)
A	36.0	36.7	35.3
B	23.0	23.5	22.5
C	18.0	18.4	17.6



For general terms and conditions please visit: http://www.cosmoferrites.com/Downloads/Downloads/bcb70e7c-ae33-40ec-a881-0d5120db57b6_GTC.pdf