

Appearance & Shape: To be free from any defect such as flow, burrs, unevenness etc, As per IEC standards.

Effective Parameters irrespective of material grade (per piece)

- Effective Length (L_e): 84.8 mm
- Effective Area (A_e): 90.0mm²
- Effective Area (A_{Min}): 90.0mm²
- Effective Volume (V_e): 7635mm³

Approximate weight : 38.0g/pc



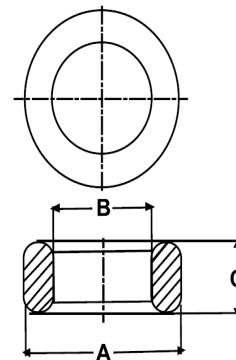
T3415 OL (Un- Coated)

Test Conditions: 10kHz/150mV/CFR COIL,N=01/Lo=Zero/25°C

Material Grade	Initial Permeability (μ_{iac})	AL Value (nH)	Ordering code
CF196	2000 \pm 20%	2650+30%/-20%	CF196T3415
CF139	2100 \pm 20%	2800+30%/-20%	CF139T3415
CF130	3000 \pm 20%	4000+30%/-20%	CF130T3415
CF195A	5000 \pm 20%	6650+30%/-20%	CF195AT3415
CF265	5000 \pm 20%	6650+30%/-20%	CF265T3415
CF190	6000 \pm 20%	8000+30%/-20%	CF190T3415
CF197	7000 \pm 20%	9300+30%/-20%	CF197T3415
CF199	9000 \pm 20%	12000 \pm 30%	CF199T3415

Dimensions(Un-coated Core)

Dimension	Nominal (in mm)	Maximum (in mm)	Minimum (in mm)
A	34.0	34.7	33.7
B	21.8	22.3	21.3
C	15.0	15.3	14.7



For general terms and conditions please visit: http://www.cosmoferrites.com/Downloads/Downloads/bcb70e7c-ae33-40ec-a881-0d5120db57b6_GTC.pdf