

Appearance & Shape: To be free from any defect such as flow, burrs, unevenness etc, As per IEC standards.

Effective Parameters irrespective of material grade (per piece)

- Effective Length (L_e): 72.6 mm
- Effective Area (A_e): 81.9mm²
- Effective Area (A_{Min}): 81.9mm²
- Effective Volume (V_e): 5937mm³

Approximate weight : 30.0g/pc



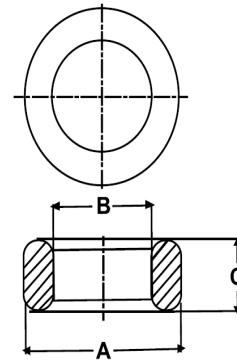
T2915 OL (Un- Coated)

Test Conditions: 10kHz/150mV/CFR COIL,N=01/Lo=Zero/25°C

Material Grade	Initial Permeability (μ_{iac})	AL Value (nH)	Ordering code
CF196	2000 \pm 20%	2850+30%/-20%	CF196T2915
CF139	2100 \pm 20%	2950+30%/-20%	CF139T2915
CF130	3000 \pm 20%	4250+30%/-20%	CF130T2915
CF195A	5000 \pm 20%	7100+30%/-20%	CF195AT2915
CF265	5000 \pm 20%	7100+30%/-20%	CF265T2915
CF190	6000 \pm 20%	8500+30%/-20%	CF190T2915
CF197	7000 \pm 20%	9900+30%/-20%	CF197T2915
CF199	9000 \pm 20%	12700 \pm 30%	CF199T2915

Dimensions(Un-coated Core)

Dimension	Nominal (in mm)	Maximum (in mm)	Minimum (in mm)
A	29.6	30.3	28.9
B	18.4	19.0	17.8
C	14.9	15.3	14.5



For general terms and conditions please visit: http://www.cosmoferrites.com/Downloads/Downloads/bcb70e7c-ae33-40ec-a881-0d5120db57b6_GTC.pdf