

Appearance & Shape: To be free from any defect such as flow, burrs, unevenness etc, As per IEC standards.

Effective Parameters irrespective of material grade (per piece)

- Effective Length (L_e): 60.1 mm
- Effective Area (A_e): 83.8mm²
- Effective Area (A_{Min}): 83.8mm²
- Effective Volume (V_e): 5042mm³

Approximate weight : 26g/pc



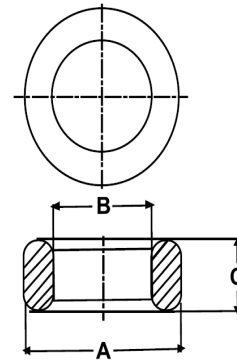
T2615 OL (Un- Coated)

Test Conditions: 10kHz/150mV/CFR COIL,N=01/Lo=Zero/25°C

Material Grade	Initial Permeability (μ_{iac})	AL Value (nH)	Ordering code
CF196	2000 \pm 20%	3500+30%/-20%	CF196T2615
CF139	2100 \pm 20%	3650+30%/-20%	CF139T2615
CF130	3000 \pm 20%	5250+30%/-20%	CF130T2615
CF195A	5000 \pm 20%	8750+30%/-20%	CF195AT2615
CF265	5000 \pm 20%	8750+30%/-20%	CF265T2615
CF190	6000 \pm 20%	10500+30%/-20%	CF190T2615
CF197	7000 \pm 20%	12200+30%/-20%	CF197T2615
CF199	9000 \pm 20%	15750 \pm 30%	CF199T2615

Dimensions(Un-coated Core)

Dimension	Nominal (in mm)	Maximum (in mm)	Minimum (in mm)
A	26.0	26.55	25.45
B	14.5	14.85	14.15
C	15.0	15.3	14.7



For general terms and conditions please visit: http://www.cosmoferrites.com/Downloads/Downloads/bcb70e7c-ae33-40ec-a881-0d5120db57b6_GTC.pdf