

Appearance & Shape: To be free from any defect such as flow, burrs, unevenness etc, As per IEC standards.

Effective Parameters irrespective of material grade (per piece)

- Effective Length (L_e): 61.5 mm
- Effective Area (A_e): 74.6mm²
- Effective Area (A_{Min}): 74.6mm²
- Effective Volume (V_e): 4587mm³

Approximate weight : 22.0g/pc



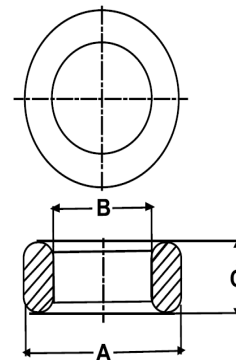
T2515 OL (Un- Coated)

Test Conditions: 10kHz/150mV/CFR COIL,N=01/Lo=Zero/25°C

Material Grade	Initial Permeability (μ_{iac})	AL Value (nH)	Ordering code
CF196	2000 ±20%	3050+30%/-20%	CF196T2515
CF139	2100 ±20%	3200+30%/-20%	CF139T2515
CF130	3000 ±20%	4550+30%/-20%	CF130T2515
CF195A	5000 ±20%	7600+30%/-20%	CF195AT2515
CF265	5000 ±20%	7600+30%/-20%	CF265T2515
CF190	6000 ±20%	9100+30%/-20%	CF190T2515
CF197	7000 ±20%	10600+30%/-20%	CF197T2515
CF199	9000 ±20%	13700 ±30%	CF199T2515

Dimensions(Un-coated Core)

Dimension	Nominal (in mm)	Maximum (in mm)	Minimum (in mm)
A	25.0	25.5	24.5
B	15.05	15.55	14.55
C	115.0	15.5	14.5



For general terms and conditions please visit: http://www.cosmoferrites.com/Downloads/Downloads/bcb70e7c-ae33-40ec-a881-0d5120db57b6_GTC.pdf