

Appearance & Shape: To be free from any defect such as flow, burrs, unevenness etc, As per IEC standards.

Effective Parameters irrespective of material grade (per piece)

- Effective Length (L_e): 61.5 mm
- Effective Area (A_e): 49.7mm²
- Effective Area (A_{Min}): 49.7mm²
- Effective Volume (V_e): 3056mm³

Approximate weight : 14.2g/pc



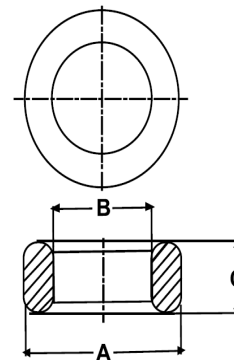
T2510 OL (Un- Coated)

Test Conditions: 10kHz/150mV/CFR COIL,N=01/Lo=Zero/25°C

Material Grade	Initial Permeability (μ_{iac})	AL Value (nH)	Ordering code
CF196	2000 ±20%	2050+30%/-20%	CF196T2510
CF139	2100 ±20%	2100+30%/-20%	CF139T2510
CF130	3000 ±20%	3000+30%/-20%	CF130T2510
CF195A	5000 ±20%	5100+30%/-20%	CF195AT2510
CF265	5000 ±20%	5100+30%/-20%	CF265T2510
CF190	6000 ±20%	6100+30%/-20%	CF190T2510
CF197	7000 ±20%	7100+30%/-20%	CF197T2510
CF199	9000 ±20%	9100 ±30%	CF199T2510

Dimensions(Un-coated Core)

Dimension	Nominal (in mm)	Maximum (in mm)	Minimum (in mm)
A	25.0	25.5	24.5
B	15.05	15.55	14.45
C	10.0	10.5	9.5



For general terms and conditions please visit: http://www.cosmoferrites.com/Downloads/Downloads/bcb70e7c-ae33-40ec-a881-0d5120db57b6_GTC.pdf