

**Appearance & Shape:** To be free from any defect such as flow, burrs, unevenness etc, As per IEC standards.

**Effective Parameters irrespective of material grade (per piece)**

- Effective Length ( $L_e$ ): 54.15 mm
  - Effective Area ( $A_e$ ): 53.34mm<sup>2</sup>
  - Effective Area ( $A_{Min}$ ): 53.34mm<sup>2</sup>
  - Effective Volume ( $V_e$ ): 2888mm<sup>3</sup>
- Approximate weight : 14.56g/pc**



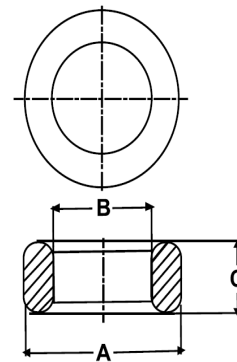
## T2212A OL (Un- Coated)

**Test Conditions: 10kHz/150mV/CFR COIL,N=01/Lo=Zero/25°C**

Material Grade	Initial Permeability ( $\mu_{iac}$ )	AL Value (nH)	Ordering code
CF196	2000 $\pm$ 20%	2450+30%/-20%	CF196T2212A
CF139	2100 $\pm$ 20%	2600+30%/-20%	CF139T2212A
CF130	3000 $\pm$ 20%	3700+30%/-20%	CF130T2212A
CF195A	5000 $\pm$ 20%	6200+30%/-20%	CF195AT2212A
CF265	5000 $\pm$ 20%	6200+30%/-20%	CF265T2212A
CF190	6000 $\pm$ 20%	7400+30%/-20%	CF190T2212A
CF197	7000 $\pm$ 20%	8650+30%/-20%	CF197T2212A
CF199	9000 $\pm$ 20%	11000 $\pm$ 30%	CF199T2212A

## Dimensions(Un-coated Core)

Dimension	Nominal (in mm)	Maximum (in mm)	Minimum (in mm)
A	22.1	22.5	21.7
B	13.7	14.0	13.4
C	12.7	13.1	12.3



For general terms and conditions please visit: [http://www.cosmoferrites.com/Downloads/Downloads/bcb70e7c-ae33-40ec-a881-0d5120db57b6\\_GTC.pdf](http://www.cosmoferrites.com/Downloads/Downloads/bcb70e7c-ae33-40ec-a881-0d5120db57b6_GTC.pdf)