

Appearance & Shape: To be free from any defect such as flow, burrs, unevenness etc, As per IEC standards.

Effective Parameters irrespective of material grade (per piece)

- Effective Length (L_e): 54.1 mm
- Effective Area (A_e): 49.5mm²
- Effective Area (A_{Min}): 49.5mm²
- Effective Volume (V_e): 2678mm³

Approximate weight : 14.5g/pc



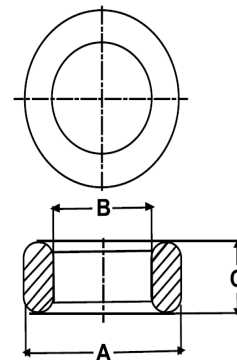
T2212 OL (Un- Coated)

Test Conditions: 10kHz/150mV/CFR COIL,N=01/Lo=Zero/25°C

Material Grade	Initial Permeability (μ_{iac})	AL Value (nH)	Ordering code
CF196	2000 \pm 20%	2300+30%/-20%	CF196T2212
CF139	2100 \pm 20%	2400+30%/-20%	CF139T2212
CF130	3000 \pm 20%	3400+30%/-20%	CF130T2212
CF195A	5000 \pm 20%	5700+30%/-20%	CF195AT2212
CF265	5000 \pm 20%	5700+30%/-20%	CF265T2212
CF190	6000 \pm 20%	6900+30%/-20%	CF190T2212
CF197	7000 \pm 20%	8000+30%/-20%	CF197T2212
CF199	9000 \pm 20%	10300 \pm 30%	CF199T2212

Dimensions(Un-coated Core)

Dimension	Nominal (in mm)	Maximum (in mm)	Minimum (in mm)
A	22.1	22.5	21.7
B	13.7	14.0	13.4
C	12.0	12.4	11.6



For general terms and conditions please visit: http://www.cosmoferrites.com/Downloads/Downloads/bcb70e7c-ae33-40ec-a881-0d5120db57b6_GTC.pdf