

Appearance & Shape: To be free from any defect such as flow, burrs, unevenness etc, As per IEC standards.

Effective Parameters irrespective of material grade (per piece)

- Effective Length (L_e): 54.15 mm
- Effective Area (A_e): 26.17mm²
- Effective Area (A_{Min}): 26.17mm²
- Effective Volume (V_e): 1417mm³

Approximate weight : 7.15g/pc



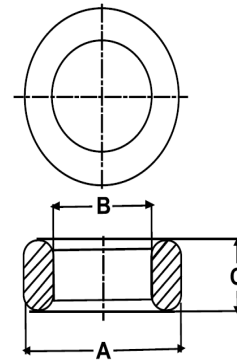
T2206 OL (Un- Coated)

Test Conditions: 10kHz/150mV/CFR COIL,N=01/Lo=Zero/25°C

Material Grade	Initial Permeability (μ_{iac})	AL Value (nH)	Ordering code
CF196	2000 ±20%	1200+30%/-20%	CF196T2206
CF139	2100 ±20%	1300+30%/-20%	CF139T2206
CF130	3000 ±20%	1800+30%/-20%	CF130T2206
CF195A	5000 ±20%	3000+30%/-20%	CF195AT2206
CF265	5000 ±20%	3000+30%/-20%	CF265T2206
CF190	6000 ±20%	3600+30%/-20%	CF190T2206
CF197	7000 ±20%	4200+30%/-20%	CF197T2206
CF199	9000 ±20%	5450 ±30%	CF199T2206

Dimensions(Un-coated Core)

Dimension	Nominal (in mm)	Maximum (in mm)	Minimum (in mm)
A	22.1	22.5	21.7
B	13.7	14.0	13.4
C	6.35	6.65	6.05



For general terms and conditions please visit: http://www.cosmoferrites.com/Downloads/Downloads/bcb70e7c-ae33-40ec-a881-0d5120db57b6_GTC.pdf