

**Appearance & Shape:** To be free from any defect such as flow, burrs, unevenness etc, As per IEC standards.

**Effective Parameters irrespective of material grade (per piece)**

- Effective Length ( $L_e$ ): 43.6 mm
- Effective Area ( $A_e$ ): 38.41mm<sup>2</sup>
- Effective Area ( $A_{Min}$ ): 38.41mm<sup>2</sup>
- Effective Volume ( $V_e$ ): 1675mm<sup>3</sup>

**Approximate weight : 8.7g/pc**



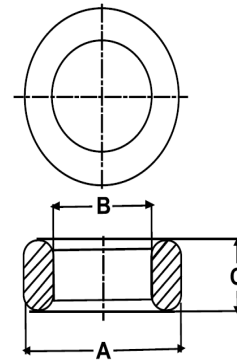
## T2008 OL (Un- Coated)

**Test Conditions: 10kHz/150mV/CFR COIL,N=01/Lo=Zero/25°C**

Material Grade	Initial Permeability ( $\mu_{iac}$ )	AL Value (nH)	Ordering code
CF196	2000 $\pm$ 20%	2200+30%/-20%	CF196T2008
CF139	2100 $\pm$ 20%	2300+30%/-20%	CF139T2008
CF130	3000 $\pm$ 20%	3300+30%/-20%	CF130T2008
CF195A	5000 $\pm$ 20%	5500+30%/-20%	CF195AT2008
CF265	5000 $\pm$ 20%	5500+30%/-20%	CF265T2008
CF190	6000 $\pm$ 20%	6600+30%/-20%	CF190T2008
CF197	7000 $\pm$ 20%	7700+30%/-20%	CF197T2008
CF199	9000 $\pm$ 20%	9900 $\pm$ 30%	CF199T2008

## Dimensions(Un-coated Core)

Dimension	Nominal (in mm)	Maximum (in mm)	Minimum (in mm)
A	20.0	20.4	19.6
B	10.0	10.5	9.5
C	8.0	8.4	7.6



For general terms and conditions please visit: [http://www.cosmoferrites.com/Downloads/Downloads/bcb70e7c-ae33-40ec-a881-0d5120db57b6\\_GTC.pdf](http://www.cosmoferrites.com/Downloads/Downloads/bcb70e7c-ae33-40ec-a881-0d5120db57b6_GTC.pdf)